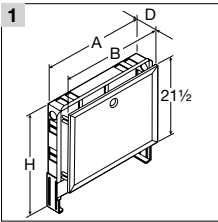


User Guide

Viega Manifold Cabinet



Framing



- 1** Frame the wall opening for the manifold cabinet using the dimensions in the table below.

Part No.	Framing Width (in)	Framing Height (in)
15800	21¼	26 - 33
15801	28¾	
15802	46½	



The dimensions above reflect an additional 1/8" added to the height and width of the wall opening to make inserting the cabinet easier. The height of the framed wall opening is dependent on the adjustment of the legs.

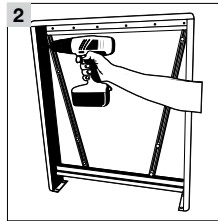
- The width of the wall opening should be between the width of the cabinet body and the faceplate (measurements A and B of the schematic)

Part No.	A (in)	B (in)	H (in)	D (in)
15800	21⅞	23⅝	26 - 33	4¾ - 6½
15801	28⅝	29½		
15802	46⅝	47¼		

- The height of the wall opening is dependent on the final position of the legs.
- Minimum wall depth is 4½".

Manifold cabinet preparation

- Remove the front door, door frame, and slide-out kick plate.
- Remove the knockouts that you plan to use. Webbing between knockouts may be snipped for additional clearance.
- The manifold cabinet can be drilled in the event the knockouts do not align with piping. Be sure to remove any sharp edges or burrs left behind after drilling.
- Loosen the leg mounting hardware.



- 2** Using an 1/8" drill bit, drill the metal enclosure for the mounting screws (Typically this would be done 2" down from top and 9" up from bottom.)



This document is subject to updates. For the most current Viega technical literature please visit www.viega.us.



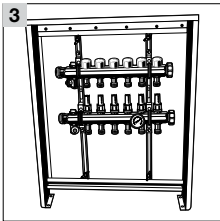
Viega products are designed to be installed by licensed and trained plumbing and mechanical professionals who are familiar with Viega products and their installation. **Installation by non-professionals may void Viega LLC's warranty.**

Mounting the cabinet

- Position the cabinet in the wall opening.
- Lift up the cabinet so that the top of the box is flush with the top of the wall opening. If necessary, slide the legs down until they rest on the floor (or framed bottom plate) and tighten the wing nuts.
- Keep the front edge of the box even with the framing members.
- Using 1¼" screws, attach the cabinet to the framing members in the previously drilled holes, additionally the legs may be attached to the floor if desired.
- Using the knockouts or drilled holes as a guide, drill the framing members to accommodate the manifold piping. (Follow local building codes when drilling or notching.)

Attaching the manifold

- Loosen the four wingnuts that adjust the manifold mounting rails.
- Position the four threaded rods on the rails to the approximate location of the manifold bracket holes.

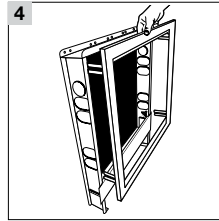


- 3** Remove the nuts from the threaded rod, place the manifold on the rails and loosely tighten all nuts.

- Horizontally and vertically position the manifold to align with knockouts. Be sure to leave room for controls or other products that can fit in a cabinet.
- Fully tighten all mounting hardware.
- Inlet and outlet piping can now be connected. Trim any sheet metal contacting piping as this can cause unwanted noise.

Attaching the kick plate and door frame

- Slide the kick plate flanges into the retainers within the cabinet.
- Turn the four door frame brackets 90° so they are facing the enclosure.



- 4** Slide the brackets onto the threaded rod until the door frame contacts the wall and tighten wingnuts.

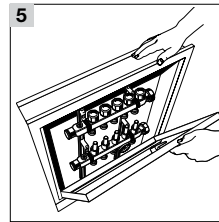
- Verify all plumbing, electrical, and mounting hardware connections are properly tightened.



The kick plate can be omitted in place of finished wall surface after installation.

Installing the door

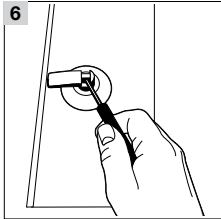
- Tilt the door at a 45° angle.
- Insert the bottom of the door into the bottom of the door frame and align the plastic pegs with the holes in the bottom of the door.



- 5** Push the top portion of the door flush into the frame and turn the knob or lock to secure the door.

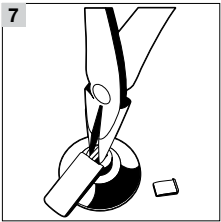
Installing the Manifold Cabinet Lock

- Remove the door from the cabinet.
- Place the door face down on a flat surface.
- Locate the retaining wedge on the back side of the knob.

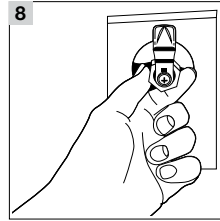


- 6** Insert the blade of a small screwdriver under the lip of the retaining wedge and pry the wedge out.

- Stand the door upright.
- With a small pair of pliers squeeze the two triangular tabs together while simultaneously pushing the back of the knob out the front of the cabinet door.

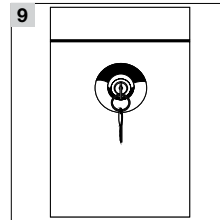


- 7** Slide the lock cylinder through the front of the door.



- 8** Be sure to position the lock in the upright position and attach the plastic nut on the back side of the lock cylinder.

- Using a pair of pliers lightly tighten the plastic nut.



Manifold cabinet (part number 15802) requires 2 lock sets be used.

