

Dimensional Document

Viega PureFlow[®] Crimp PolyAlloy Fittings



This document is subject to updates. For the most current Viega technical literature, please visit www.viega.us.

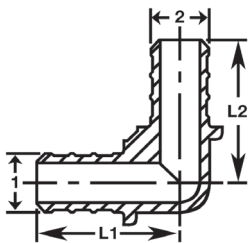


Viega products are designed to be installed by licensed and trained plumbing and mechanical professionals who are familiar with Viega products and their installation. **Installation by non-professionals may void Viega LLC's warranty.**

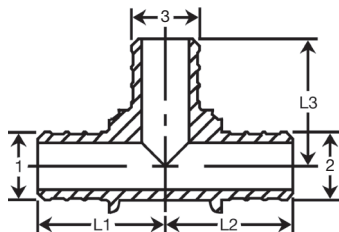


Zero Lead identifies Viega products meeting the lead free requirements of NSF/ANSI/CAN 61 through testing under NSF/ANSI/CAN 372 (0.25% or less maximum weighted average lead content).

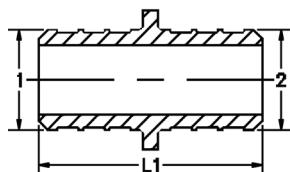
Viega PureFlow Crimp 90° Elbow Zero Lead PolyAlloy - Model V5216



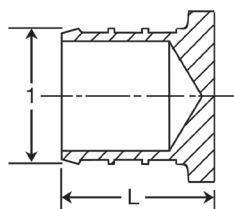
Part No.	Size (in)	L1 (in)		L2 (in)	
		1	2	Dec	Frac
43210	3/8 x 3/8	1.15	1/8	1.15	1/8
43220	1/2 x 1/2	1.15	1/8	1.15	1/8
43240	3/4 x 3/4	1.25	1/4	1.25	1/4
43242	3/4 x 1/2	1.25	1/4	1.25	1/4
43260	1 x 1	1.53	1/2	1.53	1/2

Viega PureFlow Crimp Tee Zero Lead PolyAlloy - Model V5218


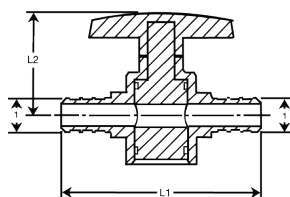
Part No.	Size (in)			L1 (in)		L2 (in)		L3 (in)	
	1	2	3	Dec	Frac	Dec	Frac	Dec	Frac
43500	3/8	3/8	3/8	1.16	13/16	1.16	13/16	1.16	13/16
43520	1/2	1/2	1/2	1.15	11/8	1.15	11/8	1.15	11/8
43334	1/2	1/2	3/4	1.25	11/4	1.25	11/4	1.15	11/8
43540	3/4	3/4	3/4	1.25	11/4	1.25	11/4	1.25	11/4
43433	3/4	1/2	1/2	1.25	11/4	1.15	11/8	1.25	11/4
43434	3/4	1/2	3/4	1.25	11/4	1.25	11/4	1.25	11/4
43443	3/4	3/4	1/2	1.15	11/8	1.15	11/8	1.25	11/4
43445	3/4	3/4	1	1.30	15/16	1.30	15/16	1.34	15/16
43544	1	3/4	3/4	1.37	13/8	1.36	13/8	1.36	13/8
43545	1	3/4	1	1.54	19/16	1.39	13/8	1.54	19/16
43553	1	1	1/2	1.33	15/16	1.33	15/16	1.32	15/16
43554	1	1	3/4	1.33	15/16	1.33	15/16	1.26	11/4
43560	1	1	1	1.53	11/2	1.53	11/2	1.53	11/2

Viega PureFlow Crimp Zero Lead Coupling PolyAlloy - Model V5215


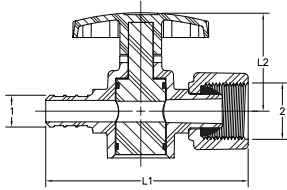
Part No.	Size (in)		L (in)	
	1	2	Dec	Frac
43402	3/8	3/8	1.52	11/2
43403	1/2	1/2	1.50	11/2
43332	1/2	3/8	1.52	11/2
43343	3/4	1/2	1.50	11/2
43353	1	1/2	1.70	11/16
43404	3/4	3/4	1.50	11/2
43354	1	3/4	1.70	11/16
43355	1	1	1.82	113/16

Viega PureFlow Crimp Test Plug Zero Lead PolyAlloy - Model V5058


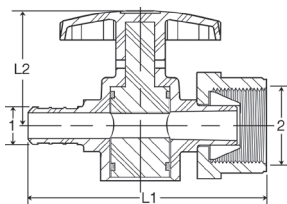
Part No.	Size (in)		L (in)	
	1		Dec	Frac
43702	3/8		0.76	3/4
43723	1/2		0.76	3/4
43744	3/4		0.95	15/16
43765	1		1.13	11/8

Viega PureFlow Crimp Valve Zero Lead PolyAlloy 1/4 Turn - Model V5236


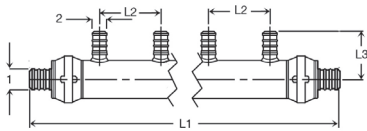
Part No.	Size (in)		L1 (in)		L2 (in)	
	1		Dec	Frac	Dec	Frac
43030	1/2		2.83	213/16	1.45	17/16
43040	3/4		3.00	3	1.45	17/16

Viega PureFlow Crimp Stop Valve Straight Zero Lead PolyAlloy Crimp x Lav ¼Turn - Model V5036.30


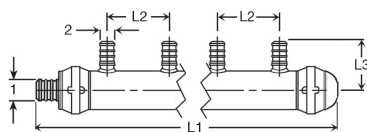
Part No.	Size (in)		L1 (in)		L2 (in)	
	1	2	Dec	Frac	Dec	Frac
43023	3/8	1/2 Lav	3.00	3	1.45	17/16

Viega PureFlow Crimp Stop Valve Straight Zero Lead PolyAlloy Crimp x Closet ¼ Turn - Model V5036.31


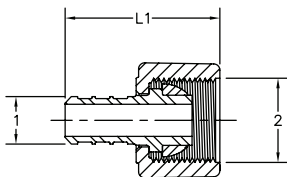
Part No.	Size (in)		L1 (in)		L2 (in)	
	1	2	Dec	Frac	Dec	Frac
43002	3/8	1/2 Closet	3.00	3	1.45	17/16
43003	1/2	1/2 Closet	3.00	3	1.45	17/16

Viega PureFlow Crimp Manifold Zero Lead PolyAlloy Flow Through - Model V5031.2


Part No.	Size (in)		Outlets	L1 (in)		L2 (in)		L3 (in)	
	1	2		Dec	Frac	Dec	Frac	Dec	Frac
65152	3/4	1/2	2	6.50	6 1/2	2.00	2	1.55	1 1/16
65153	3/4	1/2	3	8.50	8 1/2	2.00	2	1.55	1 1/16
65154	3/4	1/2	4	10.50	10 1/2	2.00	2	1.55	1 1/16
65254	1	3/4 x 1/2	4	10.60	10 5/8	2.00	2	1.55	1 1/16
65256	1	1/2	6	14.80	14 13/16	2.00	2	1.55	1 1/16
65258	1	1/2	8	18.80	18 13/16	2.00	2	1.55	1 1/16

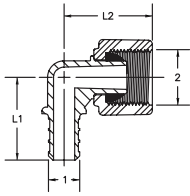
Viega PureFlow Crimp Manifold Zero Lead PolyAlloy Closed - Model V5031.22


Part No.	Size (in)		Outlets	L1 (in)		L2 (in)		L3 (in)	
	1	2		Dec	Frac	Dec	Frac	Dec	Frac
65104	3/4	1/2	4	10.10	10 1/8	2.00	2	1.55	1 1/16
65206	1	1/2	6	14.30	14 5/16	2.00	2	1.55	1 1/16

Viega PureFlow Crimp Lav Adapter Zero Lead PolyAlloy Crimp x Lav - Model V5263


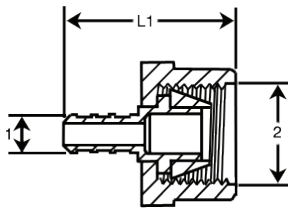
Part No.	Size (in)		L1 (in)	
	1	2	Dec	Frac
43323	3/8	1/2 Lav	1.52	1 1/2
43333	1/2	1/2 Lav	1.46	1 7/16
43344	3/4	3/4 Lav	1.62	1 5/8

Viega PureFlow Crimp Lav Adapter 90° Elbow Zero Lead PolyAlloy Crimp x Lav - Model V5255



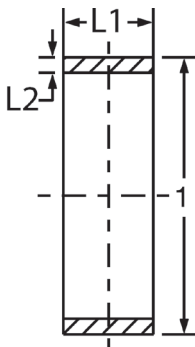
Part No.	Size (in) 1 2	L1 (in)		L2 (in)	
		Dec	Frac	Dec	Frac
43232	3/8 x 1/2 Lav	1.35	1 3/8	1.15	1 1/8
43233	1/2 x 1/2 Lav	1.35	1 3/8	1.15	1 1/8
43244	3/4 x 3/4 Lav	1.42	1 7/16	1.25	1 1/4

Viega PureFlow Crimp Closet Adapter Zero Lead PolyAlloy Crimp x Closet - Model V5257



Part No.	Size (in) 1 2	L1 (in)	
		Dec	Frac
43300	3/8 x 1/2 Closet	1.60	1 5/8
43320	1/2 x 1/2 Closet	1.60	1 5/8

Viega PureFlow Crimp Ring Copper - Model V5019.9



Part No.	Size (in) 1 2	L1 (in)		L2 (in)	
		Dec	Frac	Dec	Frac
43600	3/8 SDR9	0.32	5/16	0.05	1/16
43620	1/2 SDR9	0.32	5/16	0.05	1/16
43640	3/4 SDR9	0.32	5/16	0.05	1/16
43660	1 SDR9	0.36	3/8	0.04	1/16