

Tech Data

Viega PureFlow® Crimp by ProPress Ball Valve, Model 2882.2ZL



Description

Viega PureFlow Crimp by ProPress ball valve is a ball valve intended for potable applications. The ball valve features EPDM sealing elements, EPDM stem seals, zero lead brass body, and

Viega's Smart Connect Technology® for easy identification of unpressed connections during pressure testing.

Features

- Brass stem
- Stainless steel ball
- ProPress connections
- Smart Connect Technology

Accessories

- Handle, Model 2971.8
- T-Handle, Model 2971.26
- Insulated Handle, Model 2971.46
- Stem Extension, Model 2971.66

Approvals

- NSF®-61-372
- NSF®-U.P. Code
- ASME112.4.14/CSA B125.14
- IAPMO/ANSI Z1157
- ASTM F877/F1807
- ASTM F3347
- NSF/ANSI 359



This document is subject to updates. For the most current Viega technical literature, please visit www.viega.us.



Viega products are designed to be installed by licensed and trained plumbing and mechanical professionals who are familiar with Viega products and their installation. **Installation by non-professionals may void Viega LLC's warranty.**



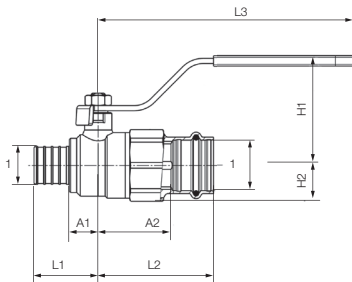
Zero Lead identifies Viega products meeting the lead free requirements of NSF/ANSI/CAN 61 through testing under NSF/ANSI/CAN 372 (0.25% or less maximum weighted average lead content).

Ratings

- Temperature Range: 0°F - 180°F
- Max. Operating Pressure: 160 psi

Component	Material
Body	Zero Lead Brass CW511L
Ball	316 Stainless Steel
Seat	Reinforced PTFE
Stem	Brass
Stem Seals	EPDM
Nut	Zinc-Plated Steel
Sealing Element	EPDM

Viega PureFlow PureFlow Crimp x ProPress Ball Valve – Model 2882.2ZL



Part No.	Size (in)	H1 (in)	H2 (in)	L1 (in)	L2 (in)	L3 (in)	A1 (in)	A2 (in)	Cv (US gal/min)
	1								
87890	1/2	1.93	0.55	1.06	2.01	4.61	0.43	1.18	6.05
87885	3/4	1.97	0.67	1.14	2.28	4.61	0.51	1.38	13.5
87895	1	2.48	0.83	1.46	2.60	5.79	0.67	1.69	22.3

V Viega LLC
585 Interlocken Blvd.
Broomfield, CO 80021

Phone (800) 976-9819
www.viega.us

TD-PF 0424 PureFlow Crimp x ProPress Ball Valve

