

Viega Valves Comparison Chart

ProPress and PureFlow Valves



	ProPress Ball Valves (Potable)	ProPress XL Ball Valves (Potable)	ProPress Ball Valves (Hydronic)	ProPress Stainless Ball Valves	PureFlow Press Ball Valves	ProPress Check Valve	ProPress Manual Balancing Valve	Thermostatic Balancing Valve	PureFlow Press Stop Valve	ProPress Butterfly Valve	PureFlow Press Wall Hydrant	Shower Valves
Valve Model	2971.1ZL, 2971.3ZL, 2971.4ZL, 2971.6ZL	2971.1XL	2973, 2973.1, 2973.3	4070	2870ZL, 2842.2ZL, 2842.1ZL	2974ZL	2980ZL	2981.3ZL	2842.3ZL, 2842.4ZL	2873.81	2888.0ZL	2842.5, 2842.6
Size Range	½" to 2"	2½" to 4"	½" to 2"	½" to 2"	¾" to 2"	½" to 2"	½" to 2"	1"	¾" to ½"	2½" to 4"	½" to ¾"	½"
Body Material	Zero Lead Bronze	Brass CW511L	Bronze/Brass	316 Stainless Steel	Zero Lead Bronze, Brass	Zero Lead Bronze	Brass CW511L	Zero Lead Bronze	Chrome-Plated Brass	Poly-Coated Ductile Iron	Chrome-Plated Brass	DZR Brass
Body Type	2-Piece Ball Valve	2-Piece Ball Valve	Ball Valve	2-Piece Ball Valve	2-Piece Ball Valve	Inline Check	Y-Body with ProPress ZL press-ends	Balancing with Integrated Ball	Stop Valve	Butterfly Valve	Wall Hydrant	Shower Valve
End Connections	P x P, P x FPT, P x Hose Bib	P x P	P x P, P x FPT, P x Hose Bib	P x P	P x P, P x Street	P x P	P x P	Male BSP	P x Comp	Lug Style	P x Hydrant	Stub Out
Unpressed Fitting Detection	Smart Connect Technology	Smart Connect Technology	Smart Connect Technology	Smart Connect Technology		Smart Connect Technology	Smart Connect Technology					
Approvals	IAPMO/ANSI Z1157, NSF®-61-372, NSF®-U.P. Code, Listed by NSF to Commercial Hot	IAPMO/ANSI Z1157, NSF®-61-372, NSF®-U.P. Code, Listed by NSF to Commercial Hot	Conforms to MSS SP-110, NSF®-U.P. Code, IAPMO/ANSI Z1157	Conforms to MSS SP-110, NSF®-61-372	Conforms to cCSAus: CSA B137.5, UPC®, NSF-upw-372, NSF / ANSI 359, ASTM F877, ASTM F3347	Conforms to MSS SP-80, NSF®-61-372	NSF®-61-372, Listed by NSF to Commercial Hot	NSF®-61-372, Listed by NSF to Commercial Hot	NSF®-61-372, ASTM F877	Conforms to MSS-SP67 and MSS-SP25	ASSE 1016, CSA B125.16, ASME A112.18.1, CSA B125.1	ASSE 1016, CSA B125.16, ASME A112.18.1, CSA B125.2
Ball	316 Stainless Steel	CP Brass	CP Brass	316 Stainless Steel	316 Stainless Steel, CP Brass	N/A	NA	316 Stainless Steel	N/A	N/A	N/A	N/A
Sealing Elements	EPDM	EDPM	EDPM	EPDM	N/A	EPDM	EPDM	N/A	N/A	N/A	N/A	N/A
Pressure Rating CWP (psi)	300	300	300	200	160	200	250	150	160	200	160	80
Temperature (F)	0°F to 250°F	0°F to 200°F	0°F to 200°F	0°F to 250°F	0°F to 180°F	0°F to 140°F	0°F to 140°F	0°F to 250°F	0°F to 180°F	0°F to 250°F	0°F to 180°F	0°F to 150°F
Accessories	2971.8, 2971.26, 2971.46, 2971.66, 2971.96	2971.8XL, 2971.9XL	2973.8, 2973.96	2970.80, 2970.96	2971.8, 2971.26, 2971.46, 2971.66, 2971.96	NA	2980.1ZL	2934.8ZL, 2913.8ZL, 2913.9, 2876.8US, 2910.50	NA	NA	NA	NA

MegaPress Valves



	MegaPressG Ball Valves	MegaPressG XL Ball Valves	MegaPress 316 Ball Valves	MegaPress 316 XL Ball Valves	MegaPress 316 3-piece Ball Valves	MegaPress 304 FKM Ball Valves	MegaPress 304 FKM XL Ball Valves	MegaPress 304 FKM 3-piece Ball Valves	MegaPress Ball Valves	MegaPress XL Ball Valves	MegaPress 3-Piece Ball Valves	MegaPress Check Valve
Valve Model	6675, 6675.1, 6675.2, 6675.3	6675XL	5170	5170XL	5175.8, 5175.8XL	4170	4170XL	4175.8, 4175.8XL	4870, 5970 (FKM)	5970XL	4875.8, 5975.8, 5975.8XL	5174
Size Range	½" to 2"	2½" to 4"	½" to 2"	2½" to 4"	½" to 4"	½" to 2"	2½" to 4"	½" to 4"	½" to 2"	2½" to 4"	½" to 4"	½" to 2"
Body Material	Bronze	CS	316 Stainless Steel	316 Stainless Steel	316 Stainless Steel	304 Stainless Steel	304 Stainless Steel	304 Stainless Steel	CS	CS	316 Stainless Steel	316 Stainless Steel
Body Type	Ball Valve	Ball Valve	Ball Valve	Ball Valve	3-Piece Ball Valve	Ball Valve	Ball Valve	3-Piece Ball Valve	Ball Valve	Ball Valve	3-Piece Ball Valve	Inline Check
End Connections	P x P, P x FPT, P x MPT, P x GJ	P x P	P x P	P x P	P x P	P x P	P x P	P x P	P x P	P x P	P x P	P x P
Unpressed Fitting Detection	Smart Connect Technology	Smart Connect Technology	Smart Connect Technology	Smart Connect Technology	Smart Connect Technology	Smart Connect Technology	Smart Connect Technology	Smart Connect Technology	Smart Connect Technology	Smart Connect Technology	Smart Connect Technology	Smart Connect Technology
Approvals	Conforms to MSS SP-110, ANSI LC 4/ CSA 6.32, ANSI LC 4a/ CSA 6.32a, ASME B31	Conforms to MSS SP-110, ANSI LC 4/ CSA 6.32, ANSI LC 4a/ CSA 6.32a, ASME B31	Conforms to MSS SP-110, ASME B31, IAPMO Z1157, NSF®-U.P., NSF®-61-372	Conforms to MSS SP-110, ASME B31, IAPMO Z1157, NSF®-U.P., NSF®-61-372	Conforms to MSS SP-110, ASME B31, IAPMO Z1157, NSF®-U.P., NSF®-61-372	Conforms to MSS SP-110, ASME B31, IAPMO Z1157, NSF®-U.P.	Conforms to MSS SP-110, ASME B31, IAPMO Z1157, NSF®-U.P.	Conforms to MSS SP-110, ASME B31, IAPMO Z1157, NSF®-U.P.	Conforms to MSS SP-110, ASME B31, IAPMO Z1157, NSF®-U.P.	Conforms to MSS SP-110, ASME B31, IAPMO Z1157, NSF®-U.P.	Conforms to MSS SP-110, ASME B31, IAPMO Z1157, NSF®-U.P.	Conforms to MSS SP-80, NSF®-61-372
Ball	316 Stainless Steel	CP Brass	316 Stainless Steel	316 Stainless Steel	316 Stainless Steel	316 Stainless Steel	316 Stainless Steel	316 Stainless Steel	316 Stainless Steel	CP Brass	316 Stainless Steel	NA
Sealing Elements	HNBR	HNBR	EPDM	EPDM	EPDM	FKM	FKM	FKM	EPDM, FKM	FKM	EPDM, FKM	EPDM
Pressure Rating CWP (psi)	125 (fuel gas) 250 (other)	125 (fuel gas) 250 (other)	250	250	250 (½" to 2") 200 (2½" to 4")	250	250	250 (½" to 2") 200 (2½" to 4")	250	250	250 (½" to 2") 200 (2½" to 4")	250
Temperature (F)	-40°F to 180°F	-40°F to 180°F	0°F to 250°F	0°F to 250°F	0°F to 250°F	0°F to 250°F	0°F to 250°F	14°F to 284°F	0°F to 250°F (EPDM) 14°F to 284°F (FKM)	14°F to 284°F	0°F to 250°F (EPDM) 14°F to 284°F (FKM)	0°F to 250°F
Accessories	2971.26, 2971.66, 4070.96	5970.9XL	2971.26, 2971.46, 2971.66, 4070.8, 4070.96	4875.8XL, 5970.9XL	4875.80, 4875.8XL, 5970.9XL	2971.26, 2971.46, 2971.66, 4070.8, 4070.96	4875.8XL, 5970.9XL	4875.80, 4875.8XL, 5970.9XL	2971.26, 2971.46, 2971.66, 4070.8, 4070.96	4875.8XL, 5970.9XL	4875.80, 4875.8XL, 5970.9XL	NA
Repair Kit	NA	NA	NA	NA	4875.91, 4875.9XL	NA	NA	4875.91, 4875.9XL	NA	NA	4875.91, 4875.9XL	NA

Why Choose Viega ProPress Valves

Why ProPress Valves Use Double Stem Seals vs. Packing Nuts

Packing nut designs consist of packed Teflon that sits around the stem. As the Teflon deteriorates, leak paths form, requiring someone to tighten the nut. This creates additional hours for installation and maintenance. Viega uses a double stem seal for our 2-piece valves to eliminate the need to constantly tighten the nut, saving numerous hours on the front-end and back-end of installs. They also will not deteriorate over time, maintaining a leak-free stem as well as prolonging the life of the valve. Viega's MegaPress 3-piece valves use a packing nut because they are designed to be taken apart so the wearable, internal components can be replaced.

Why Choose Silicon Bronze

Silicon bronze has very strong mechanical properties (tensile and yield strengths) compared to traditional leaded alloys. The silicon allows it to maintain mechanical strength, resulting in an ideal alloy for pressing (which was one of the reasons Viega chose silicon to replace the lead in compliance with lead-free regulations). It contains low levels of zinc (7% to 9%) so it's naturally resistant to dezincification and less prone to stress cracking. Dezincification is when zinc is removed, leaving a porous surface and reducing strength.

General ProPress Valve Information

Why Balancing the Hot Water Supply System is Needed

Common concerns surrounding hot water supply systems include lack of immediate hot water at a fixture, erratic water bills, and stagnant or lukewarm water causing legionella. These issues can be tied back to an unbalanced system where the constant flow does not take into account heat loss or hot water consumption, and results in uneven hot water distribution throughout the system. Viega's thermostatic balancing valve adjusts the flow of the system based on the temperature, allowing for more hot water when the system gets too cold, or less hot water if the system gets too hot, ensuring that the design temperature of the system remains constant at the minimum needed flow. This valve maintains a constant temperature throughout the system as well as keeps energy and pump costs to a minimum.



This document is subject to updates. For the most current Viega technical literature, please visit www.viega.us.

Why Choose Viega MegaPress Valves

MegaPress Technology is Faster, Safer, and More Efficient

Viega MegaPress is the first press fitting suitable for joining carbon steel pipe as well as stainless steel pipe. Appropriate for renovations, repairs, and expansions of existing steel pipe installations, MegaPress in carbon steel or stainless steel is a robust solution for everything from day-to-day installations to large commercial or industrial projects. The MegaPress ball valves from ½" to 4" complete the portfolio no matter whether in the classic 2-piece design or 3-piece design.

Why Choose the Insulated Handle

When insulating pipes and fittings, an extension must be used. With classic extensions, the insulation cannot be glued tightly. The insulated handle is a stem extension and a handle in one. The insulation can be glued tightly to the handle and avoids condensate in cooling installations and heat losses in heating installations.

General Valve Information

Viega Smart Connect® Technology

Viega Smart Connect technology provides the installer quick and easy identification of an unpressed fitting during a leak test. When the fitting is pressed, a secure, non-detachable, mechanical connection is created. Smart Connect technology provides the installer with an easy way to see connections that have not been pressed before putting the system into operation.

Ball Valves/Two-Piece Ball Valves

Ball valves/two-piece ball valves have two main pieces that are usually threaded or welded together. These valves are not used when repairs are needed. They are typically the most commonly used valve.

Three-Piece Ball Valves

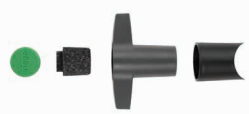
Three-piece ball valves have two end caps and a body. The middle section is typically bolted between the two end caps so that it can be easily removed for cleaning and repair.









Viega products are designed to be installed by licensed and trained plumbing and mechanical professionals who are familiar with Viega products and their installation. **Installation by non-professionals may void Viega LLC's warranty.**

Accessories Compatibility

Key:
 ✓ Possible
 X Not Possible
 * Technically Possible (will work but isn't recommended)



Models	2971.26	2971.46	2971.66	4070.96	2971.9XL	5970.9XL
 2971.1ZL, 2971.3ZL, 2971.4ZL, 2971.6ZL, 2870ZL	✓	✓	✓	*	X	X
 2971.1XL	X	X	X	X	✓	X
 6675, 6675.1, 6675.2, 6675.3	✓	X	*	*	X	X
 5170 4170 4870 5970	✓	✓	*	✓	X	X
 5170XL 4170XL 5970XL	X	X	X	X	X	✓
 4175.8XL 5175.8XL 5975.8XL	X	X	X	X	X	✓

Viega LLC
 585 Interlocken Blvd.
 Broomfield, CO 80021

Phone (800) 976-9819
 www.viega.us

