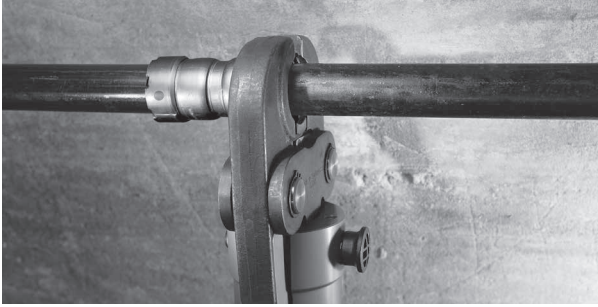


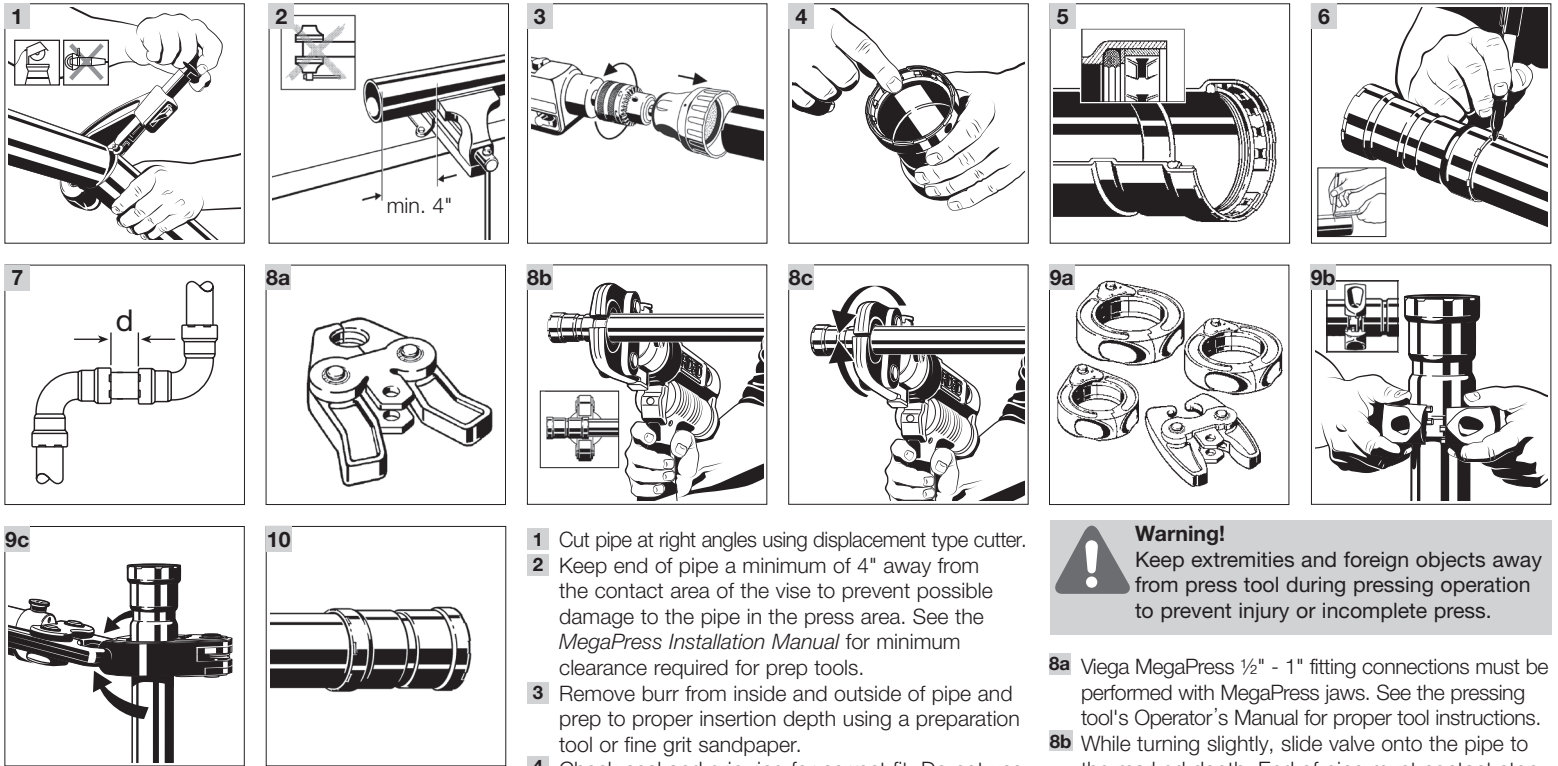
## Product Instructions

# Viega MegaPress®G ½" to 2" Fittings



**Viega LLC**  
585 Interlocken Blvd.  
Broomfield, CO 80021  
  
Phone (800) 976-9819  
www.viega.us

PI-MP 561108 0223 MegaPressG ½ to 2 Fittings (EN)



**Warning!**  
Keep extremities and foreign objects away from press tool during pressing operation to prevent injury or incomplete press.

- 8a** Viega MegaPress ½" - 1" fitting connections must be performed with MegaPress jaws. See the pressing tool's Operator's Manual for proper tool instructions.
- 8b** While turning slightly, slide valve onto the pipe to the marked depth. End of pipe must contact stop. Open the MegaPress jaw and place at right angles on the fitting. Visually check insertion depth using mark on piping.
- 8c** Start pressing process and hold the trigger until the jaw has engaged the fitting.
- 9a** Viega MegaPress 1¼" to 2" fitting connections must be performed with MegaPress rings and V2 actuator. See the pressing tool's Operator's Manual for proper tool instructions.
- 9b** Open the MegaPress ring and place at right angles on the fitting. The MegaPress ring must be engaged on the fitting bead. Check insertion depth.
- 9c** Place V2 actuator onto the MegaPress ring and start pressing process. Hold the trigger until the actuator has engaged the MegaPress ring.
- 10** Remove MegaPress jaw from fitting or release V2 actuator from the MegaPress ring and then remove the MegaPress ring from the fitting on completion of press. Remove control label to indicate press has been completed.

EN

## Viega MegaPressG ½" to 2" Fittings

### IMPORTANT INFORMATION - FOLLOW ALL INSTRUCTIONS.

**!** Viega products are designed to be installed by licensed and trained plumbing and mechanical professionals who are familiar with Viega products and their installation. **Installation by non-professionals may void Viega LLC's warranty.**

**DANGER!**  
**Read and understand all instructions for installing Viega MegaPressG fittings.** Failure to follow all instructions may result in extensive property damage, serious injury, or death. Install according to the Manufacturer's Instructions.

**Caution!**  
The fittings are for use with fuel gases and are intended for the operating pressure 0-125 psi.

**Caution!**  
The fuel gas system shall not be used as a grounding electrode for an electrical system.

- 1** Cut pipe at right angles using displacement type cutter.
- 2** Keep end of pipe a minimum of 4" away from the contact area of the vise to prevent possible damage to the pipe in the press area. See the *MegaPress Installation Manual* for minimum clearance required for prep tools.
- 3** Remove burr from inside and outside of pipe and prep to proper insertion depth using a preparation tool or fine grit sandpaper.
- 4** Check seal and grip ring for correct fit. Do not use oils or lubricants.
- 5** Illustration demonstrates proper fit of grip ring, separation ring and sealing element.
- 6** Mark proper insertion depth. Improper insertion depth may result in an improper seal. The depth marking shall be visible on the completed assembly.

| Pipe Size (in) | Insertion Depth (in) |
|----------------|----------------------|
| ½              | 1 ¼                  |
| ¾              | 1 ¾                  |
| 1              | 1 ¾                  |
| 1¼             | 1 ¾                  |
| 1½             | 1 ¾                  |
| 2              | 2                    |

- 7** Refer to chart for minimum distance between fittings. To ensure a correct press, a minimum distance between press fittings must be maintained. Failure to provide this distance may result in an improper seal.

| Pipe Diameter (in) | d (in) | d (mm) |
|--------------------|--------|--------|
| ½                  | ¼      | 6      |
| ¾                  | ¼      | 6      |
| 1                  | ¼      | 6      |
| 1¼                 | ½      | 13     |
| 1½                 | ½      | 13     |
| 2                  | ½      | 13     |

**i** The installation, inspection, testing and purging of the fuel gas system shall be in accordance with local codes or, in the absence of local codes, in accordance with the International Fuel Gas Code, NFPA 54/National Fuel Gas Code z223.1, the Uniform Plumbing Code, NFPA 58 or CSA B 149.1 as applicable.



ANSI/CAN/UL/ULC 180 Standard for Safety for Combustible Liquid Tank Accessories: Compression Fittings for Aboveground Pipe Supply and Fill Vents. Install according to the Manufacturer's Instructions. For Combustible Liquid Use. Pressure rating max 125 psi / 861 kPa. Fire rating 30 minutes.