

Dimensional Document

Viega ProPress® Fittings

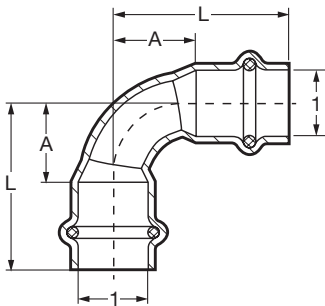


This document is subject to updates. For the most current Viega technical literature, please visit www.viega.us.



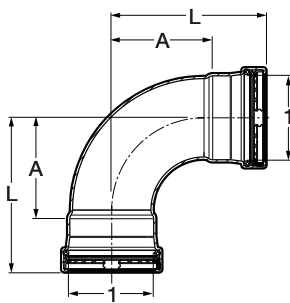
Viega products are designed to be installed by licensed and trained plumbing and mechanical professionals who are familiar with Viega products and their installation. **Installation by non-professionals may void Viega LLC's warranty.**

Viega ProPress 90° Elbow Copper P x P - Model 2916

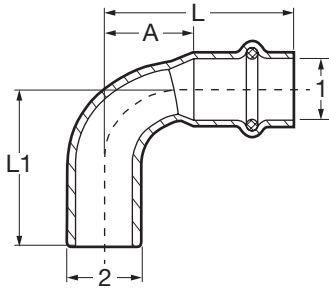


Part No.	Size (in)	A (in)		L (in)	
		Dec	Frac	Dec	Frac
77317	1/2 x 1/2	0.75	3/4	1.50	1 1/2
77022	3/4 x 3/4	0.76	3/4	1.67	1 11/16
77027	1 x 1	1.28	1 1/4	2.19	2 3/16
77032	1 1/4 x 1 1/4	1.28	1 1/4	2.31	2 5/16
77037	1 1/2 x 1 1/2	1.29	1 5/16	2.72	2 3/4
77042	2 x 2	2.16	2 3/16	3.74	3 3/4

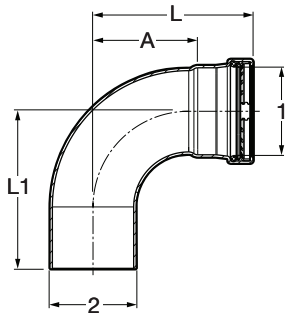
Viega ProPress 90° Elbow P x P - Model 0916XL



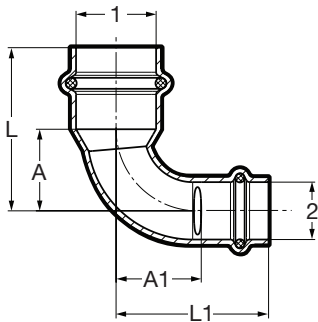
Part No.	Size (in)	A (in)		L (in)	
		Dec	Frac	Dec	Frac
20623	2 1/2 x 2 1/2	3.19	3 3/16	4.88	4 7/8
20628	3 x 3	3.76	3 3/4	5.73	5 3/4
20633	4 x 4	4.90	4 7/8	7.26	7 1/4

Viega ProPress 90° Street Elbow Copper P x FTG - Model 2916.1


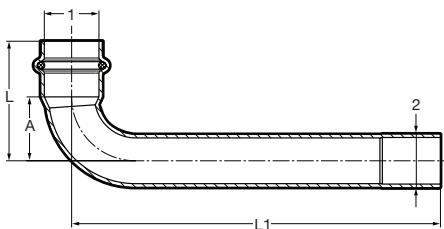
Part No.	Size (in)		A (in)		L (in)		L1 (in)	
	1	2	Dec	Frac	Dec	Frac	Dec	Frac
77347	½	½	0.75	¾	1.50	1½	1.54	1 ⁹ / ₁₆
77052	¾	¾	0.76	¾	1.67	1 ¹¹ / ₁₆	1.83	1 ¹³ / ₁₆
77057	1	1	1.28	1¼	2.19	2 ³ / ₁₆	2.27	2¼
77062	1¼	1¼	1.28	1¼	2.31	2 ⁵ / ₁₆	2.48	2½
77067	1½	1½	1.29	1 ⁵ / ₁₆	2.72	2¾	2.80	2 ¹³ / ₁₆
77072	2	2	2.16	2 ³ / ₁₆	3.74	3¾	3.78	3¾

Viega ProPress 90° Street Elbow P x FTG - Model 0916.1XL


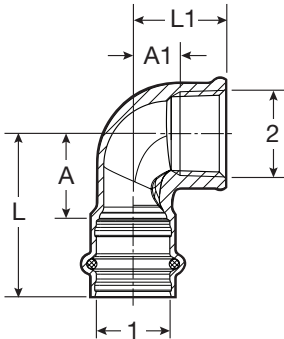
Part No.	Size (in)		A (in)		L (in)		L1 (in)	
	1	2	Dec	Frac	Dec	Frac	Dec	Frac
20638	2½	2½	3.19	3 ³ / ₁₆	4.88	4 ⁷ / ₈	4.80	4 ¹³ / ₁₆
20643	3	3	3.76	3¾	5.73	5¾	5.63	5 ⁵ / ₈
20648	4	4	4.90	4 ⁷ / ₈	7.26	7¼	7.13	7 ¹ / ₈

Viega ProPress 90° Reducing Elbow Copper P x P - Model 2916.3


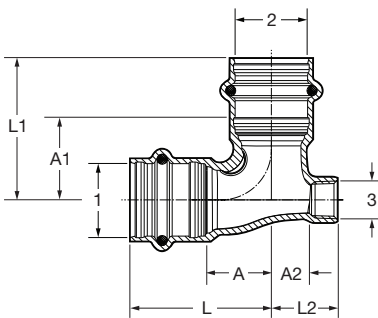
Part No.	Size (in)		A (in)		A1 (in)		L (in)		L1 (in)	
	1	2	Dec	Frac	Dec	Frac	Dec	Frac	Dec	Frac
77325	¾	½	0.91	1 ⁵ / ₁₆	0.94	1 ⁵ / ₁₆	1.81	1 ¹³ / ₁₆	1.69	1 ¹¹ / ₁₆
77330	1	¾	1.20	1 ³ / ₁₆	1.30	1 ⁵ / ₁₆	2.11	2 ¹ / ₈	2.21	2 ³ / ₁₆

Viega ProPress 90° Extended Street Elbow Copper P x FTG - Model 2947


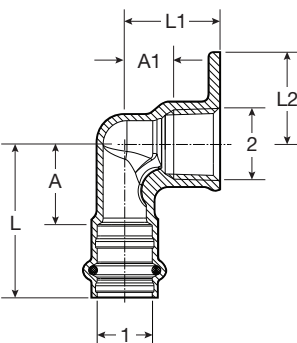
Part No.	Size (in)		A (in)		L (in)		L1 (in)	
	1	2	Dec	Frac	Dec	Frac	Dec	Frac
77353	¾	¾	1.02	1	1.93	1 ¹⁵ / ₁₆	5.98	6

Viega ProPress 90° Elbow Zero Lead Bronze P x FPT - Model 2914.2ZL


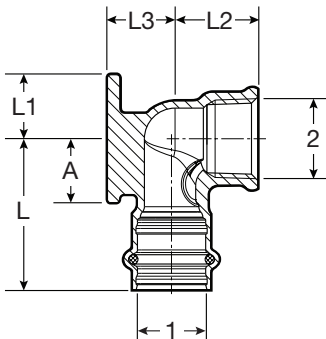
Part No.	Size (in)		A (in)		A1 (in)		L (in)		L1 (in)	
	1	2	Dec	Frac	Dec	Frac	Dec	Frac	Dec	Frac
79520	1/2	3/8	0.94	15/16	0.42	7/16	1.77	1 3/4	0.83	13/16
79525	1/2	1/2	0.94	15/16	0.57	9/16	1.77	1 3/4	1.10	1 1/8
79530	1/2	3/4	1.06	1 1/16	0.51	1/2	1.89	1 7/8	1.06	1 1/16
79535	3/4	1/2	1.06	1 1/16	0.65	5/8	1.97	2	1.18	1 3/16
79540	3/4	3/4	1.06	1 1/16	0.57	9/16	1.97	2	1.12	1 1/8
79545	1	1/2	1.06	1 1/16	0.72	3/4	1.97	2	1.26	1 1/4
79550	1	1	1.34	1 5/16	0.76	3/4	2.24	2 1/4	1.42	1 7/16
79560	1 1/4	1 1/4	1.54	1 9/16	0.89	7/8	2.56	2 9/16	1.57	1 9/16
79565	1 1/2	1 1/2	1.69	1 11/16	1.05	1 1/16	3.11	3 1/8	1.73	1 3/4
79570	2	2	2.17	2 3/16	1.35	1 3/8	3.74	3 3/4	2.05	2 1/16

Viega ProPress Vent Elbow Zero Lead Bronze P x P x FPT - Model 2917.3ZL


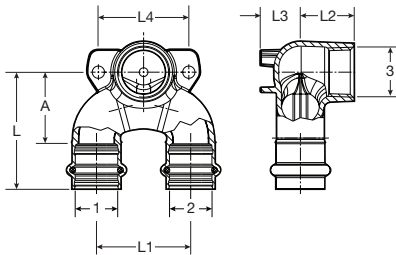
Part No.	Size (in)			A (in)		A1 (in)		A2 (in)		L (in)		L1 (in)		L2 (in)	
	1	2	3	Dec	Frac	Dec	Frac	Dec	Frac	Dec	Frac	Dec	Frac	Dec	Frac
79635	1/2	1/2	1/8	0.67	1 1/16	0.67	1 1/16	0.44	7/16	1.50	1 1/2	1.50	1 1/2	0.71	1 1/16
79640	3/4	3/4	1/8	0.83	1 3/16	0.83	1 3/16	0.54	9/16	1.73	1 3/4	1.73	1 3/4	0.81	1 3/16

Viega ProPress 90° Hi Ear Elbow Zero Lead Bronze P x FPT - Model 2925.2ZL


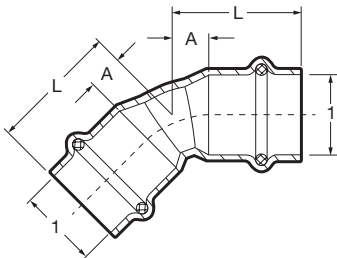
Part No.	Size (in)		A (in)		A1 (in)		L (in)		L1 (in)		L2 (in)	
	1	2	Dec	Frac	Dec	Frac	Dec	Frac	Dec	Frac	Dec	Frac
79205	1/2	1/2	0.94	15/16	0.57	9/16	1.77	1 3/4	1.10	1 1/8	1.07	1 1/16

Viega ProPress 90° Drop Ear Elbow Zero Lead Bronze P X FPT - Model 2925.5ZL


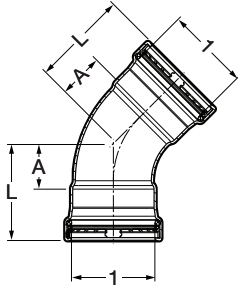
Part No.	Size (in)		A (in)		L (in)		L1 (in)		L2 (in)		L3 (in)	
	1	2	Dec	Frac	Dec	Frac	Dec	Frac	Dec	Frac	Dec	Frac
79185	1/2	3/8	0.94	15/16	1.77	1 3/4	0.74	3/4	0.83	3/16	0.67	1 1/16
79190	1/2	1/2	0.94	15/16	1.77	1 3/4	0.74	3/4	1.10	1 1/8	0.67	1 1/16
79195	3/4	3/4	1.06	1 1/16	1.97	2	0.83	13/16	1.12	1 1/8	0.83	13/16

Viega ProPress Double Drop Elbow Zero Lead Bronze P x P x FPT - Model 2928.7ZL


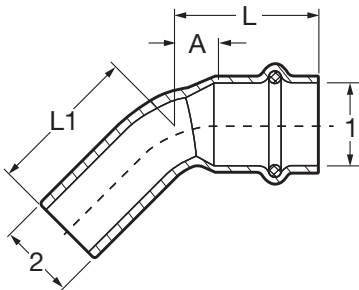
Part No.	Size (in)			A (in)		L (in)		L1 (in)		L2 (in)		L3 (in)		L4 (in)	
	1	2	3	Dec	Frac	Dec	Frac	Dec	Frac	Dec	Frac	Dec	Frac	Dec	Frac
78800	1/2	1/2	1/2	1.34	15/16	2.17	2 3/16	1.97	2	1.10	1 1/8	0.67	1 1/16	1.57	1 9/16
78802	3/4	3/4	1/2	1.54	1 9/16	2.44	2 7/16	1.97	2	1.10	1 1/8	0.83	13/16	2.05	2 1/16
78801	3/4	3/4	3/4	1.54	1 9/16	2.44	2 7/16	1.97	2	1.12	1 1/8	0.83	13/16	1.89	1 7/8
78803	1	1	1/2	1.77	1 3/4	2.68	2 11/16	2.36	2 3/8	1.10	1 1/8	0.87	7/8	2.52	1 1/2

Viega ProPress 45° Elbow Copper P x P - Model 2926


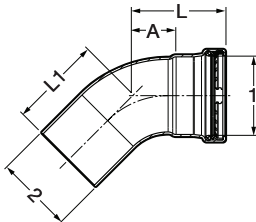
Part No.	Size (in)		A (in)		L (in)	
	1	1	Dec	Frac	Dec	Frac
77607	1/2	1/2	0.30	5/16	1.04	1 1/16
77023	3/4	3/4	0.36	3/8	1.26	1 1/4
77028	1	1	0.47	1/2	1.38	1 3/8
77033	1 1/4	1 1/4	0.58	9/16	1.61	1 5/8
77038	1 1/2	1 1/2	0.65	5/8	2.08	2 1/16
77043	2	2	0.86	7/8	2.44	2 7/16

Viega ProPress 45° P x P - Model 0926XL


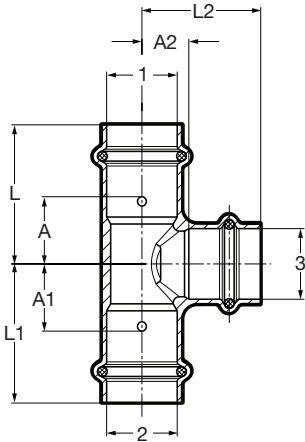
Part No.	Size (in)		A (in)		L (in)	
	1	1	Dec	Frac	Dec	Frac
20653	2½	2½	1.48	1½	3.18	3¾
20658	3	3	1.73	1¾	3.70	3⅞
20663	4	4	1.96	1⅝	4.63	4⅝

Viega ProPress 45° Street Elbow Copper P x FTG - Model 2926.1


Part No.	Size (in)		A (in)		L (in)		L1 (in)	
	1	2	Dec	Frac	Dec	Frac	Dec	Frac
77637	½	½	0.31	5/16	1.06	1¼	1.10	1⅛
77053	¾	¾	0.36	3/8	1.26	1¼	1.30	1⅝
77058	1	1	0.47	½	1.38	1⅜	1.49	1½
77063	1¼	1¼	0.58	9/16	1.61	1⅝	1.67	1⅞
77068	1½	1½	0.65	5/8	2.08	2¼	2.04	2¼
77073	2	2	0.86	7/8	2.44	2⅞	2.54	2⅞

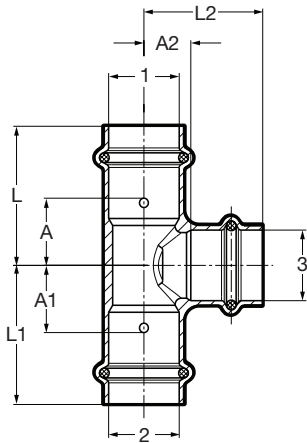
Viega ProPress 45° Street Elbow P x FTG - Model 0926.1XL


Part No.	Size (in)		A (in)		L (in)		L1 (in)	
	1	2	Dec	Frac	Dec	Frac	Dec	Frac
20668	2½	2½	1.48	1½	3.18	3¾	3.10	3⅞
20673	3	3	1.73	1¾	3.70	3⅞	3.60	3⅝
20678	4	4	2.23	2¼	4.59	4⅞	4.45	4⅞

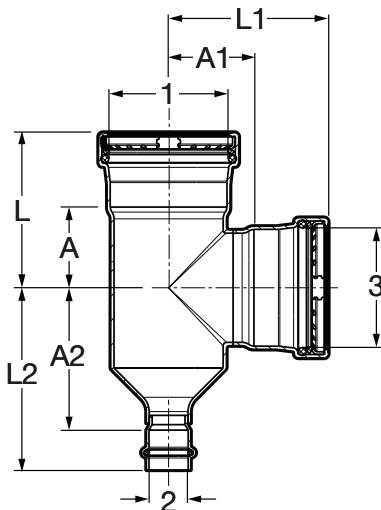
Viega ProPress Tee Copper P x P x P - Model 2918


Part No.	Size (in)			A (in)		A1 (in)		A2 (in)		L (in)		L1 (in)		L2 (in)	
	1	2	3	Dec	Frac	Dec	Frac	Dec	Frac	Dec	Frac	Dec	Frac	Dec	Frac
77377	1/2	x 1/2	x 1/2	0.75	3/4	0.75	3/4	0.50	1/2	1.50	1 1/2	1.50	1 1/2	1.25	1 1/4
77382	1/2	x 1/2	x 3/4	0.91	15/16	0.91	15/16	0.59	9/16	1.65	1 5/8	1.65	1 5/8	1.50	1 1/2
15493	1/2	x 1/2	x 1	1.10	1 1/8	1.10	1 1/8	0.55	9/16	1.85	1 7/8	1.85	1 7/8	1.46	1 7/16
77387	3/4	x 3/4	x 3/4	0.85	7/8	0.85	7/8	0.59	9/16	1.75	1 3/4	1.75	1 3/4	1.50	1 1/2
77392	3/4	x 1/2	x 1/2	0.69	1 1/16	0.98	1	0.63	5/8	1.59	1 9/16	1.73	1 3/4	1.38	1 3/8
77397	3/4	x 1/2	x 3/4	0.85	7/8	1.14	1 3/16	0.59	9/16	1.75	1 3/4	1.89	1 7/8	1.50	1 1/2
77402	3/4	x 3/4	x 1/2	0.69	1 1/16	0.69	1 1/16	0.63	5/8	1.59	1 9/16	1.59	1 9/16	1.38	1 3/8
77407	3/4	x 3/4	x 1	0.97	1	0.97	1	0.63	5/8	1.87	1 7/8	1.87	1 7/8	1.54	1 9/16
77412	1	x 1	x 1	0.97	1	0.97	1	0.79	13/16	1.87	1 7/8	1.87	1 7/8	1.69	1 11/16
22263	1	x 1/2	x 3/4	0.85	7/8	1.24	1 1/4	0.75	3/4	1.76	1 3/4	1.99	2	1.66	1 11/16
94767	1	x 1/2	x 1	0.97	1	1.52	1 1/2	0.79	13/16	1.87	1 7/8	2.26	2 1/4	1.69	1 11/16
77417	1	x 3/4	x 1/2	0.69	1 1/16	0.89	7/8	0.79	13/16	1.59	1 9/16	1.79	1 13/16	1.54	1 9/16
77422	1	x 3/4	x 3/4	0.85	7/8	1.04	1 1/16	0.75	3/4	1.75	1 3/4	1.95	1 15/16	1.65	1 5/8
77427	1	x 3/4	x 1	0.97	1	1.18	1 3/16	0.78	3/4	1.87	1 7/8	2.07	2 1/16	1.69	1 11/16
77432	1	x 1	x 1/2	0.69	1 1/16	0.69	1 1/16	0.79	13/16	1.59	1 9/16	1.59	1 9/16	1.54	1 9/16
77437	1	x 1	x 3/4	0.85	7/8	0.85	7/8	0.75	3/4	1.75	1 3/4	1.75	1 3/4	1.65	1 5/8
15488	1	x 1	x 1 1/4	1.16	1 3/16	1.16	1 3/16	0.84	13/16	2.07	2 1/16	2.07	2 1/16	1.87	1 7/8
77442	1 1/4	x 1 1/4	x 1 1/4	1.02	1	1.02	1	0.86	7/8	2.05	2 1/16	2.05	2 1/16	1.89	1 7/8
22253	1 1/4	x 1/2	x 1 1/4	1.02	1	1.77	1 3/4	0.87	7/8	2.05	2 1/16	2.52	2 1/2	1.89	1 7/8
22243	1 1/4	x 3/4	x 1/2	0.64	5/8	1.13	1 1/8	0.93	15/16	1.68	1 11/16	2.03	2 1/16	1.68	1 11/16
22258	1 1/4	x 3/4	x 3/4	0.76	3/4	1.30	1 5/16	0.87	7/8	1.80	1 13/16	2.21	2 3/16	1.78	1 3/4
22268	1 1/4	x 3/4	x 1	0.88	7/8	1.40	1 3/8	0.91	15/16	1.91	1 15/16	2.31	2 5/16	1.82	1 13/16
22248	1 1/4	x 3/4	x 1 1/4	1.02	1	1.54	1 9/16	0.86	7/8	2.05	2 1/16	2.45	2 7/16	1.89	1 7/8
22238	1 1/4	x 1	x 1/2	0.64	5/8	0.91	15/16	0.93	15/16	1.68	1 11/16	1.82	1 13/16	1.68	1 11/16
94762	1 1/4	x 1	x 3/4	0.76	3/4	1.14	1 1/8	0.87	7/8	1.79	1 13/16	2.05	2 1/16	1.77	1 3/4
14568	1 1/4	x 1	x 1	0.88	7/8	1.28	1 1/4	0.91	15/16	1.91	1 15/16	2.19	2 3/16	1.81	1 13/16
94757	1 1/4	x 1 1/4	x 1/2	0.65	5/8	0.65	5/8	0.93	15/16	1.67	1 11/16	1.67	1 11/16	1.67	1 11/16
77452	1 1/4	x 1 1/4	x 3/4	0.77	3/4	0.77	3/4	0.89	7/8	1.79	1 13/16	1.79	1 13/16	1.77	1 3/4
77447	1 1/4	x 1 1/4	x 1	0.88	7/8	0.88	7/8	0.90	7/8	1.91	1 15/16	1.91	1 15/16	1.81	1 13/16
77457	1 1/2	x 1 1/2	x 1 1/2	1.13	1 1/8	1.13	1 1/8	1.13	1 1/8	2.56	2 9/16	2.56	2 9/16	2.56	2 9/16

continued on next page

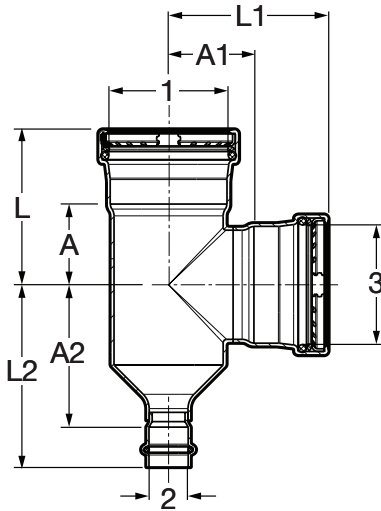
Viega ProPress Tee Copper P x P x P - Model 2918, continued


Part No.	Size (in)			A (in)		A1 (in)		A2 (in)		L (in)		L1 (in)		L2 (in)	
	1	2	3	Dec	Frac	Dec	Frac	Dec	Frac	Dec	Frac	Dec	Frac	Dec	Frac
79660	1½	x 1	x ¾	0.67	1¹⁄₁₆	1.39	1¾	1.16	1¾	2.17	2³⁄₁₆	2.44	2⁷⁄₁₆	2.05	2¹⁄₁₆
15458	1½	x 1	x 1	0.74	¾	1.54	1⁹⁄₁₆	1.06	1¹⁄₁₆	2.17	2³⁄₁₆	2.44	2⁷⁄₁₆	1.97	2
15463	1½	x 1	x 1½	1.13	1¹⁄₈	1.83	1¹³⁄₁₆	1.13	1¹⁄₈	2.56	2⁹⁄₁₆	2.74	2¾	2.56	2⁹⁄₁₆
22233	1½	x 1¼	x ¾	0.67	1¹⁄₁₆	1.08	1¹⁄₁₆	1.15	1¹⁄₈	2.09	2¹⁄₁₆	2.11	2¹⁄₈	2.05	2¹⁄₁₆
15453	1½	x 1¼	x 1	0.74	¾	1.29	1⁵⁄₁₆	1.18	1¾	2.17	2³⁄₁₆	2.32	2⁵⁄₁₆	2.09	2¹⁄₁₆
15483	1½	x 1¼	x 1¼	0.86	7⁄₈	1.33	1⁵⁄₁₆	1.13	1¹⁄₈	2.28	2¼	2.36	2³⁄₈	2.17	2³⁄₁₆
15448	1½	x 1½	x ½	0.47	½	0.47	½	1.10	1¹⁄₈	1.89	1⁷⁄₈	1.89	1⁷⁄₈	1.85	1⁷⁄₈
77462	1½	x 1½	x ¾	0.66	1¹⁄₁₆	0.66	1¹⁄₁₆	1.14	1¹⁄₈	2.09	2¹⁄₁₆	2.09	2¹⁄₁₆	2.05	2¹⁄₁₆
77467	1½	x 1½	x 1	0.74	¾	0.74	¾	1.18	1¾	2.17	2³⁄₁₆	2.17	2³⁄₁₆	2.09	2¹⁄₁₆
77472	1½	x 1½	x 1¼	0.86	7⁄₈	0.86	7⁄₈	1.13	1¹⁄₈	2.28	2¼	2.28	2¼	2.17	2³⁄₁₆
77477	2	x 2	x 2	1.37	1¾	1.37	1¾	1.37	1¾	2.95	2¹⁵⁄₁₆	2.95	2¹⁵⁄₁₆	2.95	2¹⁵⁄₁₆
15518	2	x 1¼	x 1¼	0.94	1⁵⁄₁₆	1.84	1¹³⁄₁₆	1.33	1⁵⁄₁₆	2.52	2½	2.87	2⁷⁄₈	2.36	2³⁄₈
15513	2	x 1½	x ¾	0.70	1¹⁄₁₆	1.25	1¼	1.38	1¾	2.28	2¼	2.68	2¹¹⁄₁₆	2.28	2¼
15498	2	x 1½	x 1	0.82	1³⁄₁₆	1.45	2⁷⁄₁₆	1.38	1¾	2.40	2³⁄₈	2.87	2⁷⁄₈	2.28	2¼
15508	2	x 1½	x 1¼	0.94	1⁵⁄₁₆	1.55	1⁹⁄₁₆	1.49	1½	2.52	2½	2.97	3	2.52	2½
15503	2	x 1½	x 1½	1.13	1¹⁄₈	1.65	1⁵⁄₈	1.37	1¾	2.72	2¾	3.07	3¹⁄₁₆	2.80	2¹³⁄₁₆
22228	2	x 1½	x 2	1.38	1¾	1.89	1⁷⁄₈	1.38	1¾	2.95	2¹⁵⁄₁₆	3.33	3⁵⁄₁₆	2.95	2¹⁵⁄₁₆
15538	2	x 2	x ½	0.54	9⁄₁₆	0.54	9⁄₁₆	1.30	1⁵⁄₁₆	2.13	2¹⁄₈	2.13	2¹⁄₈	2.05	2¹⁄₁₆
94777	2	x 2	x ¾	0.79	1³⁄₁₆	0.79	1³⁄₁₆	1.26	1¼	2.37	2³⁄₈	2.37	2³⁄₈	2.17	2³⁄₁₆
94772	2	x 2	x 1	0.91	1⁵⁄₁₆	0.91	1⁵⁄₁₆	1.30	1⁵⁄₁₆	2.49	2½	2.49	2½	2.21	2³⁄₁₆
77487	2	x 2	x 1¼	1.04	1¹⁄₁₆	1.04	1¹⁄₁₆	1.37	1¾	2.62	2⁵⁄₈	2.62	2⁵⁄₈	2.40	2³⁄₈
77482	2	x 2	x 1½	1.13	1¹⁄₈	1.13	1¹⁄₈	1.37	1¾	2.72	2¾	2.72	2¾	2.80	2¹³⁄₁₆

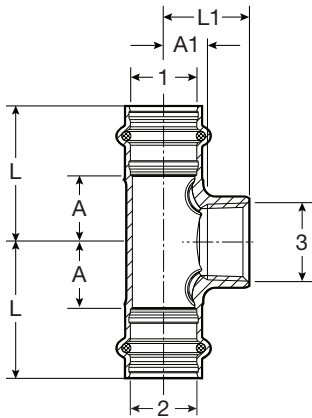
Viega ProPress Tee P x P x P - Model 0918XL


Part No.	Size (in)			A (in)		A1 (in)		A2 (in)		L (in)		L1 (in)		L2 (in)	
	1	2	3	Frac	Dec	Frac	Dec	Frac	Dec	Frac	Dec	Frac	Dec	Frac	Dec
22317	2½	¾	2½	1.83	1 ¹³ / ₁₆	1.91	1 ¹⁵ / ₁₆	3.35	3 ³ / ₈	3.52	3½	3.60	3 ⁵ / ₈	4.25	4¼
20689	2½	1	2½	1.83	1 ¹³ / ₁₆	1.91	1 ¹⁵ / ₁₆	3.25	3¼	3.52	3½	3.60	3 ⁵ / ₈	4.15	4⅛
20694	2½	1¼	2½	1.83	1 ¹³ / ₁₆	1.91	1 ¹⁵ / ₁₆	3.20	1 ³ / ₁₆	3.52	3½	3.60	3 ⁵ / ₈	4.23	4¼
20699	2½	1½	2½	1.83	1 ¹³ / ₁₆	1.91	1 ¹⁵ / ₁₆	3.14	2⅛	3.52	3½	3.60	3 ⁵ / ₈	4.57	4 ⁹ / ₁₆
22316	2½	2	¾	1.04	1 ¹ / ₁₆	1.76	1 ³ / ₄	1.59	1 ⁹ / ₁₆	2.74	2 ³ / ₄	2.67	2 ¹ / ₁₆	3.17	3 ³ / ₁₆
20709	2½	2	1	1.04	1 ¹ / ₁₆	1.77	1 ³ / ₄	1.65	1 ⁵ / ₈	2.74	2 ³ / ₄	2.67	2 ¹ / ₁₆	3.24	3¼
22283	2½	2	1½	1.30	1 ⁵ / ₁₆	1.78	1 ³ / ₄	2.07	2 ¹ / ₁₆	2.99	3	3.20	1 ³ / ₁₆	3.66	3 ¹ / ₁₆
22278	2½	2	2	1.50	1½	1.78	1 ³ / ₄	2.25	2¼	3.19	3 ³ / ₁₆	3.36	3 ³ / ₈	3.83	3 ¹³ / ₁₆
20714	2½	2	2½	1.83	1 ¹³ / ₁₆	1.91	1 ¹⁵ / ₁₆	2.41	2 ⁷ / ₁₆	3.52	3½	3.60	3 ⁵ / ₈	4.00	4
22311	2½	2½	½	0.91	1 ⁵ / ₁₆	1.60	1 ⁵ / ₈	0.91	1 ⁵ / ₁₆	2.60	2 ⁵ / ₈	2.35	2 ³ / ₈	2.60	2 ⁵ / ₈
22309	2½	2½	¾	0.91	1 ⁵ / ₁₆	1.66	1 ¹¹ / ₁₆	0.91	1 ⁵ / ₁₆	2.60	2 ⁵ / ₈	2.56	2 ⁹ / ₁₆	2.60	2 ⁵ / ₈
22293	2½	2½	1	1.04	1 ¹ / ₁₆	1.77	1 ³ / ₄	1.04	1 ¹ / ₁₆	2.74	2 ³ / ₄	2.68	2 ¹ / ₁₆	2.74	2 ³ / ₄
22288	2½	2½	1¼	1.16	1 ³ / ₁₆	1.76	1 ³ / ₄	1.16	1 ³ / ₁₆	2.85	2 ⁷ / ₈	2.79	2 ¹³ / ₁₆	2.85	2 ⁷ / ₈
20803	2½	2½	1½	1.30	1 ⁵ / ₁₆	1.78	¾	1.30	1 ⁵ / ₁₆	2.99	3	3.21	3 ³ / ₁₆	2.99	3
20688	2½	2½	2	1.54	1 ⁹ / ₁₆	1.75	¾	1.54	1 ⁹ / ₁₆	3.23	3¼	3.34	3 ⁵ / ₁₆	3.23	3¼
20683	2½	2½	2½	1.83	1 ¹³ / ₁₆	1.94	1 ¹⁵ / ₁₆	1.83	1 ¹³ / ₁₆	3.52	3½	3.63	3 ⁵ / ₈	3.52	3½
22318	3	¾	3	2.07	2 ¹ / ₁₆	2.15	2⅛	3.82	3 ¹³ / ₁₆	4.04	4¼	4.11	4⅛	4.72	4 ³ / ₄
20724	3	1	3	2.07	2 ¹ / ₁₆	2.15	2⅛	3.96	3 ¹⁵ / ₁₆	4.04	4¼	4.11	4⅛	4.86	4 ⁷ / ₈
20729	3	1¼	3	2.07	2 ¹ / ₁₆	2.15	2⅛	3.83	3 ¹³ / ₁₆	4.04	4¼	4.11	4⅛	4.86	4 ⁷ / ₈
20727	3	1½	3	2.07	2 ¹ / ₁₆	2.15	2⅛	3.71	3 ¹¹ / ₁₆	4.04	4¼	4.11	4⅛	5.14	5⅛
20732	3	2	2	1.56	1 ⁹ / ₁₆	2.03	2 ¹ / ₁₆	2.33	2 ⁵ / ₁₆	3.52	3½	3.61	3 ⁵ / ₈	3.92	3 ¹⁵ / ₁₆
20734	3	2	2½	1.85	1 ⁷ / ₈	2.15	2⅛	2.63	2 ⁵ / ₈	3.82	3 ¹³ / ₁₆	3.85	3 ⁷ / ₈	4.21	4 ³ / ₁₆
20739	3	2	3	2.07	2 ¹ / ₁₆	2.15	2⅛	2.84	2 ¹³ / ₁₆	4.04	4¼	4.11	4⅛	4.43	4 ⁷ / ₁₆
20744	3	2½	2	1.56	1 ⁹ / ₁₆	2.03	2 ¹ / ₁₆	2.07	2 ¹ / ₁₆	3.52	3½	3.61	3 ⁵ / ₈	3.76	3 ³ / ₄
20749	3	2½	2½	1.85	1 ⁷ / ₈	2.15	2⅛	2.56	2 ⁹ / ₁₆	3.82	3 ¹³ / ₁₆	3.85	3 ⁷ / ₈	4.25	4¼
20754	3	2½	3	2.07	2 ¹ / ₁₆	2.15	2⅛	2.78	2 ³ / ₄	4.04	4¼	4.11	4⅛	4.47	4½
22315	3	3	½	0.93	1 ⁵ / ₁₆	1.85	1 ⁷ / ₈	0.93	1 ⁵ / ₁₆	2.89	2 ⁷ / ₈	2.60	2 ⁵ / ₈	2.89	2 ⁷ / ₈
22310	3	3	¾	0.93	1 ⁵ / ₁₆	1.91	1 ¹⁵ / ₁₆	0.93	1 ⁵ / ₁₆	2.89	2 ⁷ / ₈	2.81	2 ¹³ / ₁₆	2.89	2 ⁷ / ₈
22308	3	3	1	1.06	2 ¹ / ₁₆	2.02	2	1.06	1 ¹ / ₁₆	3.03	3 ¹ / ₁₆	2.92	2 ¹⁵ / ₁₆	3.03	3 ¹ / ₁₆
22313	3	3	1¼	1.18	1 ³ / ₁₆	2.01	2	1.18	1 ³ / ₁₆	3.15	3⅛	3.04	3 ¹ / ₁₆	3.15	3⅛
20798	3	3	1½	1.32	1 ⁵ / ₁₆	2.03	2 ¹ / ₁₆	1.32	1 ⁵ / ₁₆	3.29	3 ⁵ / ₁₆	3.45	3 ⁷ / ₁₆	3.29	3 ⁵ / ₁₆

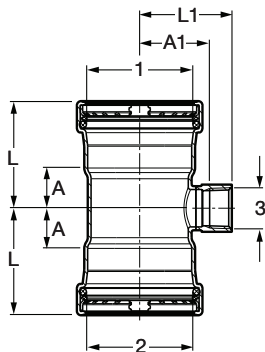
continued on next page

Viega ProPress Tee P x P x P - Model 0918XL, continued


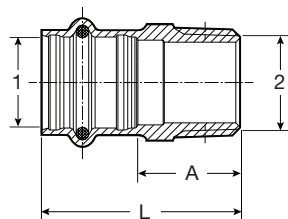
Part No.	Size (in)			A (in)		A1 (in)		A2 (in)		L (in)		L1 (in)		L2 (in)	
	1	2	3	Frac	Dec	Frac	Dec	Frac	Dec	Frac	Dec	Frac	Dec	Frac	Dec
20698	3	3	2	1.56	1 ⁹ / ₁₆	2.00	2	1.56	1 ⁹ / ₁₆	3.52	3 ¹ / ₂	3.59	3 ⁹ / ₁₆	3.52	2 ¹ / ₂
20703	3	3	2 ¹ / ₂	1.85	1 ⁷ / ₈	2.15	2 ¹ / ₈	1.85	1 ⁷ / ₈	3.82	3 ¹³ / ₁₆	3.85	3 ⁷ / ₈	3.82	3 ¹³ / ₁₆
20693	3	3	3	2.07	2 ¹ / ₁₆	2.21	2 ³ / ₁₆	2.07	2 ¹ / ₁₆	4.04	4 ¹ / ₁₆	4.18	4 ³ / ₁₆	4.04	4 ¹ / ₁₆
20774	4	3	2	1.59	1 ⁹ / ₁₆	2.57	2 ⁹ / ₁₆	3.33	3 ⁵ / ₁₆	3.96	3 ¹⁵ / ₁₆	4.15	4 ¹ / ₈	5.22	5 ¹ / ₄
20784	4	3	3	2.11	2 ¹ / ₈	2.66	2 ¹¹ / ₁₆	3.84	3 ¹³ / ₁₆	4.47	4 ¹ / ₂	4.63	4 ⁵ / ₈	5.81	5 ¹³ / ₁₆
22314	4	4	1 ¹ / ₂	1.08	1 ¹ / ₁₆	2.35	2 ³ / ₈	1.08	1 ¹ / ₁₆	3.45	3 ⁷ / ₁₆	3.10	3 ¹ / ₈	3.45	3 ⁷ / ₁₆
22312	4	4	3 ⁴ / ₄	1.08	1 ¹ / ₁₆	2.41	2 ⁷ / ₁₆	1.08	1 ¹ / ₁₆	3.45	3 ⁷ / ₁₆	3.31	3 ⁵ / ₁₆	3.45	3 ⁷ / ₁₆
20794	4	4	1	1.36	1 ³ / ₈	2.52	2 ¹ / ₂	1.36	1 ³ / ₈	3.72	3 ³ / ₄	3.42	3 ⁷ / ₁₆	3.72	3 ³ / ₄
20795	4	4	1 ¹ / ₄	1.36	1 ³ / ₈	2.50	2 ¹ / ₂	1.36	1 ³ / ₈	3.72	3 ³ / ₄	3.54	3 ⁹ / ₁₆	3.72	3 ³ / ₄
20808	4	4	1 ¹ / ₂	1.36	1 ³ / ₈	2.52	2 ¹ / ₂	1.36	1 ³ / ₈	3.72	3 ³ / ₄	3.95	3 ¹⁵ / ₁₆	3.72	3 ³ / ₄
20713	4	4	2	1.59	1 ⁹ / ₁₆	2.53	2 ¹ / ₂	1.59	1 ⁹ / ₁₆	3.96	3 ¹⁵ / ₁₆	4.11	4 ¹ / ₈	3.96	3 ¹⁵ / ₁₆
20718	4	4	2 ¹ / ₂	1.89	1 ⁷ / ₈	2.65	2 ¹¹ / ₁₆	1.89	1 ⁷ / ₈	4.25	4 ¹ / ₄	4.35	4 ³ / ₈	4.25	4 ¹ / ₄
20723	4	4	3	2.11	2 ¹ / ₈	2.69	2 ¹¹ / ₁₆	2.11	2 ¹ / ₈	4.47	4 ¹ / ₂	4.65	4 ⁵ / ₈	4.47	4 ¹ / ₂
20708	4	4	4	2.60	2 ⁵ / ₈	2.72	2 ³ / ₄	2.60	2 ⁵ / ₈	4.96	4 ¹⁵ / ₁₆	5.09	5 ¹ / ₁₆	4.96	4 ¹⁵ / ₁₆

Viega ProPress Tee Zero Lead Bronze P x P x FPT - Model 2917.2ZL


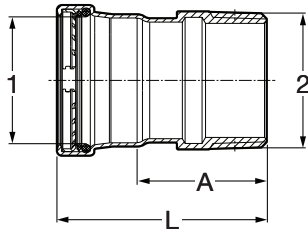
Part No.	Size (in)			A (in)		A1 (in)		L (in)		L1 (in)		
	1	2	3	Dec	Frac	Dec	Frac	Dec	Frac	Dec	Frac	
79580	1/2	1/2	1/2	FPT	0.79	13/16	0.69	1/16	1.61	15/8	1.30	15/16
79585	3/4	3/4	1/4	FPT	0.67	11/16	0.79	13/16	1.57	19/16	1.18	13/16
79590	3/4	3/4	1/2	FPT	0.79	13/16	0.88	7/8	1.69	111/16	1.42	17/16
79595	3/4	3/4	3/4	FPT	0.91	15/16	0.59	9/16	1.81	113/16	1.14	11/8
79760	1	1	1/2	FPT	0.79	13/16	1.04	11/16	1.69	111/16	1.57	19/16
79765	1	1	3/4	FPT	0.91	15/16	1.06	11/16	1.81	113/16	1.61	15/8
79770	1 1/4	1 1/4	1/2	FPT	0.83	13/16	1.16	13/16	1.85	17/8	1.69	111/16
79775	1 1/4	1 1/4	3/4	FPT	0.95	15/16	1.18	13/16	1.97	2	1.73	13/4
79780	1 1/2	1 1/2	1/2	FPT	0.87	7/8	1.24	1 1/4	2.28	2 1/4	1.77	113/16
79785	1 1/2	1 1/2	3/4	FPT	0.94	15/16	1.30	15/16	2.36	2 3/8	1.85	17/8
79790	2	2	1/2	FPT	0.98	1	1.59	19/16	2.56	2 9/16	2.13	2 1/8
79795	2	2	3/4	FPT	1.06	1 1/16	1.65	1 1/16	2.64	2 5/8	2.20	2 3/16

Viega ProPress Tee P x P x FPT - Model 0917.2XL


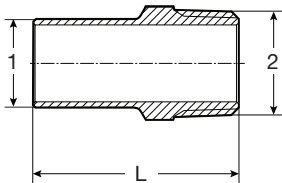
Part No.	Size (in)			A (in)		A1 (in)		L (in)		L1 (in)		
	1	2	3	Dec	Frac	Dec	Frac	Dec	Frac	Dec	Frac	
20883	2 1/2	2 1/2	3/4	FPT	1.02	1	1.78	1 3/4	2.72	2 3/4	2.34	2 5/16
20878	2 1/2	2 1/2	2	FPT	1.54	1 9/16	1.90	1 15/16	3.23	3 1/4	2.60	2 5/8
20893	3	3	3/4	FPT	1.04	1 1/16	2.03	2 1/16	3.01	3	2.59	2 9/16
20888	3	3	2	FPT	1.56	1 9/16	2.16	2 3/16	3.52	3 1/2	2.85	2 7/8
20873	4	4	3/4	FPT	1.08	1 1/16	2.53	2 1/2	3.34	3 5/16	3.09	3 1/16
20868	4	4	2	FPT	1.59	1 9/16	2.69	2 11/16	3.96	3 15/16	3.38	3 3/8

Viega ProPress Adapter Zero Lead Bronze P x MPT - Model 2911ZL


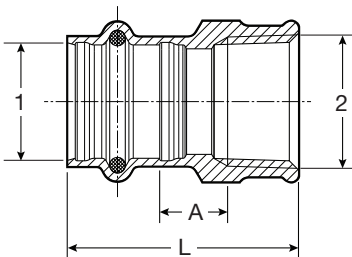
Part No.	Size (in)		A (in)		L (in)		
	1	2	Dec	Frac	Dec	Frac	
79210	1/2	3/8	MPT	0.77	3/4	1.59	19/16
79215	1/2	1/2	MPT	0.89	7/8	1.71	111/16
79220	1/2	3/4	MPT	1.00	1	1.83	113/16
79225	3/4	1/2	MPT	1.02	1	1.93	115/16
79230	3/4	3/4	MPT	1.02	1	1.93	115/16
79235	3/4	1	MPT	1.18	1 3/16	2.09	2 1/16
79240	1	3/4	MPT	1.18	1 3/16	2.09	2 1/16
79245	1	1	MPT	1.26	1 1/4	2.17	2 3/16
79250	1	1 1/4	MPT	1.54	1 9/16	2.44	2 7/16
79255	1 1/4	1	MPT	1.22	1 1/4	2.24	2 1/4
79260	1 1/4	1 1/4	MPT	1.34	1 5/16	2.36	2 3/8
79265	1 1/4	1 1/2	MPT	1.48	1 1/2	2.50	2 1/2
79270	1 1/2	1 1/4	MPT	1.34	1 5/16	2.76	2 3/4
79275	1 1/2	1 1/2	MPT	1.28	1 1/4	2.70	2 11/16
79280	1 1/2	2	MPT	1.65	1 5/8	3.07	3 1/16
79285	2	1 1/2	MPT	1.54	1 9/16	3.11	3 1/8
79290	2	2	MPT	1.50	1 1/2	3.07	3 1/16

Viega ProPress Adapter P x MPT - Model 0911XL


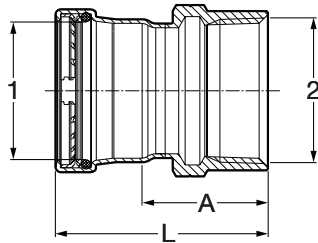
Part No.	Size (in)		A (in)		L (in)	
	1	2	Dec	Frac	Dec	Frac
20823	2½	2½ MPT	2.76	2¾	4.45	47/16
20828	3	3 MPT	2.84	2 ¹³ / ₁₆	4.80	4 ¹³ / ₁₆
20838	4	4 MPT	3.10	3⅛	5.46	57/16

Viega ProPress Adapter Zero Lead Bronze FTG x MPT - Model 2911.1ZL


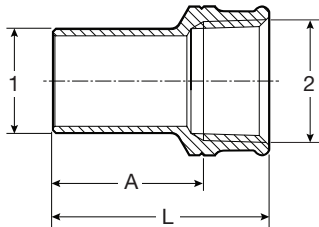
Part No.	Size (in)		L (in)	
	1	2	Dec	Frac
79375	½	¾ MPT	1.75	1¾
79380	½	½ MPT	1.95	1 ¹⁵ / ₁₆
79385	½	¾ MPT	2.05	2 ¹ / ₁₆
79390	¾	½ MPT	1.93	1 ¹⁵ / ₁₆
79395	¾	¾ MPT	2.05	2 ¹ / ₁₆
79400	1	¾ MPT	2.05	2 ¹ / ₁₆
79405	1	1 MPT	2.22	2¼
79410	1¼	1¼ MPT	2.54	2 ⁹ / ₁₆
79415	1½	1½ MPT	2.89	2 ⁷ / ₈
79420	2	2 MPT	3.33	3 ⁵ / ₁₆

Viega ProPress Adapter Zero Lead Bronze P x FPT - Model 2912ZL


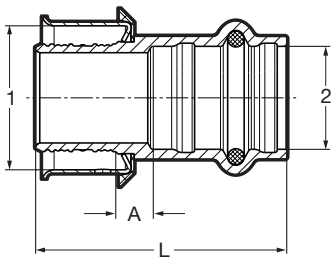
Part No.	Size (in)		A (in)		L (in)	
	1	2	Dec	Frac	Dec	Frac
79295	½	¾ FPT	0.19	3/16	1.42	17/16
79300	½	½ FPT	0.25	¼	1.61	1 ⁵ / ₈
79305	½	¾ FPT	0.27	¼	1.65	1 ⁵ / ₈
79310	¾	½ FPT	0.33	5/16	1.77	1¾
79315	¾	¾ FPT	0.35	3/8	1.81	1 ¹³ / ₁₆
79320	1	½ FPT	0.41	7/16	1.85	1 ⁷ / ₈
79325	1	¾ FPT	0.39	3/8	1.85	1 ⁷ / ₈
79330	1	1 FPT	0.44	7/16	2.01	2
79335	1	1¼ FPT	0.50	½	2.09	2 ¹ / ₁₆
79340	1¼	½ FPT	0.37	3/8	1.93	1 ¹⁵ / ₁₆
79345	1¼	1 FPT	0.24	¼	1.93	1 ¹⁵ / ₁₆
79350	1¼	1¼ FPT	0.34	5/16	2.05	2 ¹ / ₁₆
79355	1¼	1½ FPT	0.42	7/16	2.13	2 ¹ / ₈
79360	1½	1¼ FPT	0.26	¼	2.36	2 ³ / ₈
79365	1½	1½ FPT	0.34	5/16	2.44	2 ⁷ / ₁₆
79370	2	2 FPT	0.41	7/16	2.68	2 ¹¹ / ₁₆

Viega ProPress Adapter P x FPT - Model 0912XL


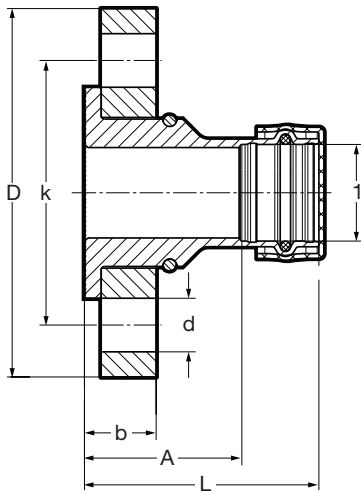
Part No.	Size (in)		A (in)		L (in)	
	1	2	Dec	Frac	Dec	Frac
20819	2½ x 2½ FPT		1.53	1½	4.15	4⅛
20829	3 x 3 FPT		1.84	1⅜	4.82	4⅓
20839	4 x 4 FPT		2.09	2⅛	5.55	5⅑

Viega ProPress Adapter Zero Lead Bronze FTG x FPT - Model 2912.1ZL


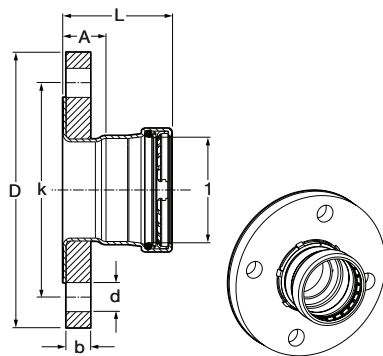
Part No.	Size (in)		A (in)		L (in)	
	1	2	Dec	Frac	Dec	Frac
79425	½ x ⅜ FPT		1.10	1⅛	1.54	1⅑
79430	½ x ½ FPT		1.22	1¼	1.75	1¾
79435	½ x ¾ FPT		1.30	1⅝	1.83	1⅓
79440	¾ x ½ FPT		1.26	1¼	1.79	1⅓
79445	¾ x ¾ FPT		1.28	1¼	1.83	1⅓
79455	1 x ½ FPT		1.35	1⅜	1.99	2
79450	1 x 1 FPT		1.33	1⅝	1.99	2
79460	1¼ x ½ FPT		1.65	1⅝	2.19	2⅜
79465	1¼ x 1¼ FPT		1.50	1½	2.19	2⅜
79470	1½ x 1½ FPT		1.88	1⅞	2.56	2⅑
79475	2 x 2 FPT		2.13	2⅞	2.95	2⅕

Viega PEX Press Adapter Zero Lead Bronze P x P - Model 2813PZL


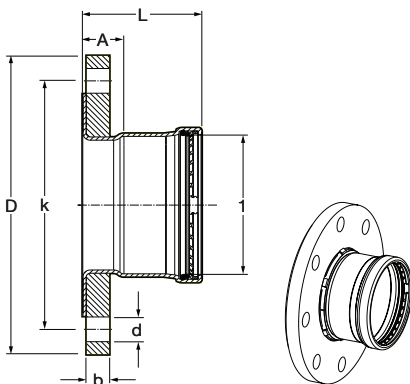
Part No.	Size (in)		A (in)		L (in)	
	1	2	Dec	Frac	Dec	Frac
99620	½ x ½		0.29	5/16	1.61	1⅝
99626	½ x ¾		0.43	7/16	1.83	1⅓
99630	¾ x ½		0.23	¼	1.56	1⅑
99640	¾ x ¾		0.33	5/16	1.73	1¾
99645	1 x ¾		0.35	3/8	1.87	1⅞
99660	1 x 1		0.45	7/16	1.97	2
99665	1¼ x 1		0.49	½	2.26	2¼
99670	1¼ x 1¼		0.49	½	2.38	2⅜
66675	1½ x 1		0.59	9/16	2.36	2⅜
99680	1½ x 1½		0.59	9/16	2.87	2⅞
99685	2 x 1		0.73	¾	2.68	2⅑
99690	2 x 2		0.59	9/16	3.21	3⅓

Viega ProPress Adapter Flange Zero Lead Bronze P x Flange - Model 2959.5ZL


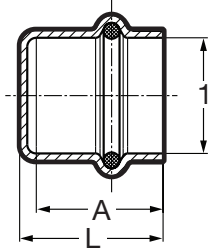
Part No.	Size (in)	A (in)		L (in)		b (in)		D (in)		k (in)		d (in)	
		Dec	Frac	Dec	Frac	Dec	Frac	Dec	Frac	Dec	Frac	Dec	Frac
79680	1	1.85	1/8	2.76	2/4	0.84	13/16	4.33	45/16	3.11	3/8	0.63	5/8
79685	1 1/4	1.73	1/4	2.76	2/4	0.84	13/16	4.53	4 1/2	3.50	3 1/2	0.63	5/8
79690	1 1/2	1.65	1/8	3.07	3/16	0.84	13/16	4.92	4 15/16	3.86	3 7/8	0.63	5/8
79695	2	2.09	2/16	3.66	3 1/16	0.84	13/16	5.91	5 15/16	4.76	4 3/4	0.75	3/4

Viega ProPress Adapter Flange P x Flange - Model 0959.5XL


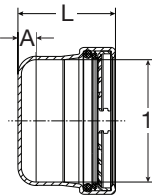
Part No.	Size (in)	A (in)		L (in)		b (in)		k (in)		D (in)		d (in)	
		Dec	Frac	Dec	Frac	Dec	Frac	Dec	Frac	Dec	Frac	Dec	Frac
20853	2 1/2	1.09	1/16	2.79	2 13/16	0.70	1 1/16	5.51	5 1/2	7.09	7 1/16	0.75	3/4
20858	3	1.20	3/16	3.17	3 3/16	0.79	13/16	5.98	6	7.48	7 1/2	0.75	3/4

Viega ProPress Adapter Flange P x Flange - Model 0959.5XL


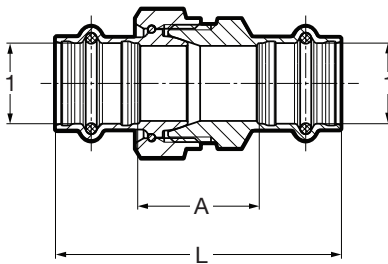
Part No.	Size (in)	A (in)		L (in)		b (in)		k (in)		D (in)		d (in)	
		Dec	Frac	Dec	Frac	Dec	Frac	Dec	Frac	Dec	Frac	Dec	Frac
20863	4	1.29	15/16	3.66	3 1/16	0.86	7/8	7.52	7 1/2	9.06	9 1/16	0.75	3/4

Viega ProPress Cap Copper P - Model 2956


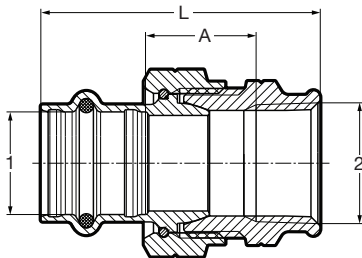
Part No.	Size (in)		A (in)		L (in)	
	1	2	Dec	Frac	Dec	Frac
77712	1/2		0.79	13/16	0.92	15/16
77717	3/4		0.94	15/16	1.07	1 1/16
77722	1		0.99	1	1.11	1 1/8
77727	1 1/4		1.20	1 3/16	1.32	1 5/16
77732	1 1/2		1.49	1 1/2	1.62	1 5/8
77737	2		1.69	1 11/16	1.81	1 13/16

Viega ProPress Cap P - Model 0956XL


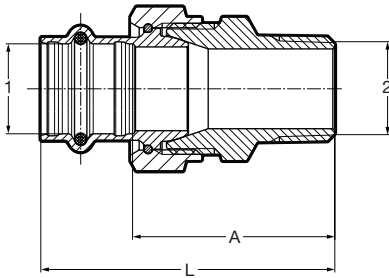
Part No.	Size (in)		A (in)		L (in)	
	1	2	Dec	Frac	Dec	Frac
20833	2 1/2		0.39	3/8	2.11	2 1/8
20843	3		0.39	3/8	2.36	2 3/8
20848	4		0.39	3/8	2.76	2 3/4

Viega ProPress Union Zero Lead Bronze P x P - Model 2960ZL


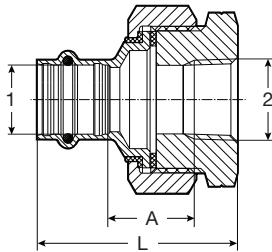
Part No.	Size (in)		A (in)		L (in)	
	1	2	Dec	Frac	Dec	Frac
79125	1/2		1.19	1 3/16	2.84	2 13/16
79130	3/4		1.34	1 5/16	3.15	3 1/8
79135	1		1.83	1 13/16	3.65	3 5/8
79140	1 1/4		1.64	1 5/8	3.69	3 11/16
79145	1 1/2		2.13	2 1/8	4.96	4 15/16
79150	2		2.07	2 1/16	5.22	5 1/4

Viega ProPress Union Zero Lead Bronze P x FPT - Model 2962ZL


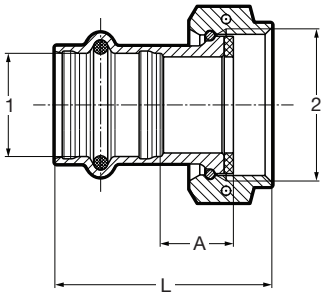
Part No.	Size (in)		A (in)		L (in)	
	1	2	Dec	Frac	Dec	Frac
79700	1/2 x 1/2	FPT	0.91	15/16	2.27	2 1/4
79705	3/4 x 3/4	FPT	0.96	15/16	2.42	2 7/16
79710	1 x 1	FPT	1.31	1 5/16	2.88	2 7/8
79715	1 1/4 x 1 1/4	FPT	1.27	1 1/4	2.97	3
79720	1 1/2 x 1 1/2	FPT	1.77	1 3/4	3.87	3 7/8
79725	2 x 2	FPT	1.65	1 5/8	3.92	3 15/16

Viega ProPress Union Zero Lead Bronze P x MPT - Model 2965ZL


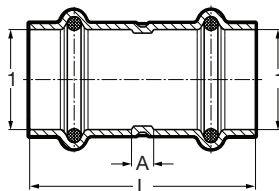
Part No.	Size (in)		A (in)		L (in)	
	1	2	Dec	Frac	Dec	Frac
79730	½ x ½ MPT		1.86	1⁄₈	2.69	2¹¹⁄₁₆
79735	¾ x ¾ MPT		2.00	2	2.90	2⁷⁄₈
79740	1 x 1 MPT		2.54	2⁹⁄₁₆	3.45	3⁷⁄₁₆
79745	1¼ x 1¼ MPT		2.49	2½	3.52	3½
79750	1½ x 1½ MPT		3.05	3¹⁄₁₆	4.47	4½
79755	2 x 2 MPT		2.99	3	4.57	4⁹⁄₁₆

Viega ProPress Dielectric Union Zero Lead Bronze P x FPT - Model 2967ZL


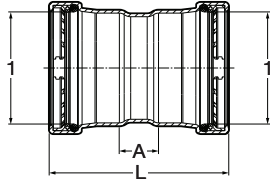
Part No.	Size (in)		A (in)		L (in)	
	1	2	Dec	Frac	Dec	Frac
79155	½ x ½ FPT		0.88	⁷⁄₈	2.24	1¼
79160	¾ x ¾ FPT		1.11	1¹⁄₈	2.57	2⁹⁄₁₆
79165	1 x 1 FPT		1.00	1	2.57	2⁹⁄₁₆
79170	1¼ x 1¼ FPT		0.97	1	2.68	2¹¹⁄₁₆
79175	1½ x 1½ FPT		1.01	1	3.11	3⁷⁄₈
79180	2 x 2 FPT		1.26	1¼	3.53	3½

Viega ProPress Tailpiece Zero Lead Bronze P x F BSP - Model 2957ZL


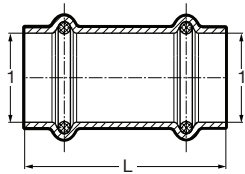
Part No.	Size (in)		A (in)		L (in)	
	1	2	Dec	Frac	Dec	Frac
79800	½ x 1 BSP		0.39	³⁄₈	1.57	1⁹⁄₁₆
79805	¾ x 1 BSP		0.63	⁵⁄₈	1.87	1⁷⁄₈
79810	1 x 1 BSP		0.91	1⁵⁄₁₆	2.14	2¹⁄₈
79815	1 x 1¼ BSP		0.73	1¹⁄₁₆	2.04	2¹⁄₁₆

Viega ProPress Coupling with Stop Copper P x P - Model 2915


Part No.	Size (in)		A (in)		L (in)	
	1	1	Dec	Frac	Dec	Frac
78047	½ x ½		0.12	¹⁄₈	1.61	1⁵⁄₈
78052	¾ x ¾		0.20	³⁄₁₆	2.01	2
78057	1 x 1		0.16	³⁄₁₆	1.97	2
78062	1¼ x 1¼		0.14	¹⁄₈	2.20	2³⁄₁₆
78067	1½ x 1½		0.14	¹⁄₈	2.99	3
78072	2 x 2		0.14	¹⁄₈	3.31	2⁵⁄₁₆

Viega ProPress Coupling with Stop P x P - Model 0915XL


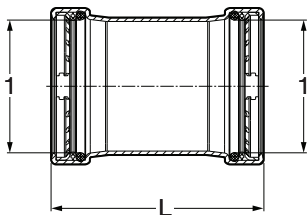
Part No.	Size (in)		A (in)		L (in)	
	1	1	Dec	Frac	Dec	Frac
20728	2½	2½	0.95	¹⁵ / ₁₆	4.33	4 ⁵ / ₁₆
20733	3	3	0.98	1	4.92	4 ¹⁵ / ₁₆
20738	4	4	1.06	1 ¹ / ₁₆	5.79	5 ¹³ / ₁₆

Viega ProPress Coupling No Stop Copper P x P - Model 2915.3


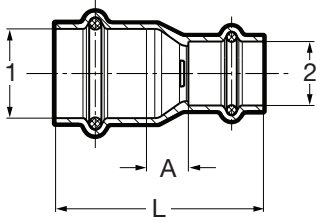
Part No.	Size (in)		L (in)	
	1	1	Dec	Frac
78172	½	½	1.61	1 ⁵ / ₈
78177	¾	¾	2.01	2
78182	1	1	1.97	2
78187	1¼	1¼	2.20	2 ³ / ₁₆
78192	1½	1½	2.99	3
78197	2	2	3.31	3 ⁵ / ₁₆

Viega ProPress Extended Coupling Copper P x P - Model 2915.5

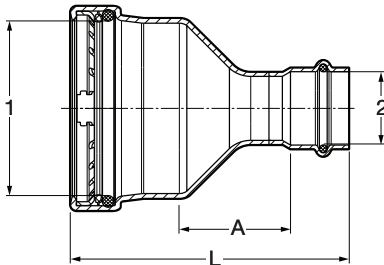

Part No.	Size (in)		L (in)	
	1	1	Dec	Frac
79005	½	½	2.99	3
79010	¾	¾	3.50	3½
79015	1	1	3.74	3¾
79020	1¼	1¼	4.13	4 ¹ / ₈
79025	1½	1½	4.72	4¾
79030	2	2	5.31	5 ⁵ / ₁₆

Viega ProPress Coupling No Stop P x P - Model 0915.5XL


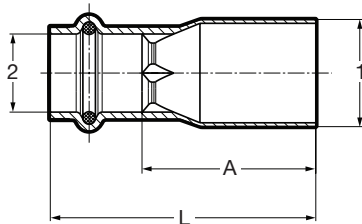
Part No.	Size (in)		L (in)	
	1	1	Dec	Frac
20743	2½	2½	4.33	4 ⁵ / ₁₆
20748	3	3	4.92	4 ¹⁵ / ₁₆
20753	4	4	5.79	5 ¹³ / ₁₆

Viega ProPress Reducer Copper P x P - Model 2915.2


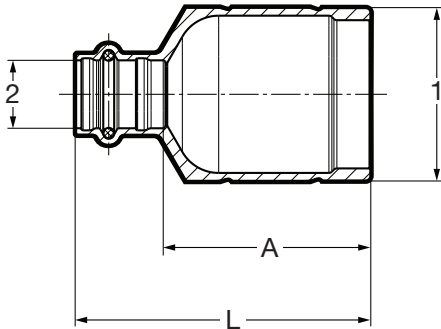
Part No.	Size (in)		A (in)		L (in)	
	1	2	Dec	Frac	Dec	Frac
78147	¾	½	0.42	7/16	2.07	2 1/16
15603	1	½	0.71	1 1/16	2.36	2 3/8
78152	1	¾	0.48	½	2.29	2 5/16
15593	1 ¼	¾	0.70	1 1/16	2.64	2 5/8
78157	1 ¼	1	0.55	9/16	2.48	2 ½
18473	1 ½	¾	0.98	1	3.33	3 5/16
15588	1 ½	1	0.74	¾	3.07	3 1/16
78162	1 ½	1 ¼	0.50	½	2.96	2 15/16
18468	2	¾	1.54	1 9/16	4.02	4
15608	2	1	1.29	1 5/16	3.78	3 ¾
22328	2	1 ¼	0.81	1 3/16	3.43	3 7/16
78167	2	1 ½	0.74	¾	3.75	3 ¾

Viega ProPress Reducer P x P - Model 0915.2XL


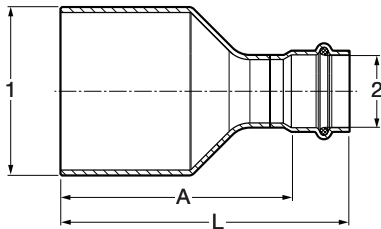
Part No.	Size (in)		A (in)		L (in)	
	1	2	Dec	Frac	Dec	Frac
20685	2 ½	1	1.76	1 ¾	4.36	4 ¾
20690	2 ½	1 ¼	1.61	1 5/8	4.34	4 5/16
20695	2 ½	1 ½	1.52	1 ½	4.64	4 5/8
20700	2 ½	2	1.41	1 7/16	4.69	4 11/16
20705	3	1 ½	1.78	1 ¾	5.17	5 3/16
20710	3	2	1.53	1 ½	5.08	5 1/16
20715	3	2 ½	1.41	1 7/16	5.07	5 1/16
20720	4	2	2.06	2 1/16	6.00	6
20725	4	2 ½	1.93	1 15/16	5.99	6
20730	4	3	1.70	1 11/16	6.03	6 1/16

Viega ProPress Reducer Copper FTG x P - Model 2915.1


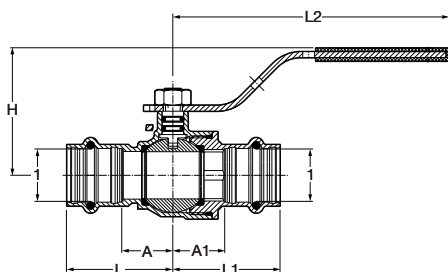
Part No.	Size (in)		A (in)		L (in)	
	1	2	Dec	Frac	Dec	Frac
78077	¾	½	1.42	1 7/16	2.17	2 3/16
78082	1	½	1.69	1 11/16	2.44	2 7/16
78087	1	¾	1.42	1 7/16	2.32	2 5/16
22333	1 ¼	½	1.91	1 15/16	2.74	2 ¾
78092	1 ¼	¾	1.85	1 7/8	2.76	2 ¾
78097	1 ¼	1	1.57	1 9/16	2.48	2 ½
14543	1 ½	¾	2.56	2 9/16	3.46	3 7/16
78102	1 ½	1	2.28	2 ¼	3.19	3 3/16
78107	1 ½	1 ¼	2.04	2 1/16	3.07	3 1/16
78112	2	1	3.03	3 1/16	3.94	3 15/16
78117	2	1 ¼	2.79	2 13/16	3.82	3 13/16
78122	2	1 ½	2.63	2 5/8	4.06	4 1/16

Viega ProPress Reducer Zero Lead Bronze FTG x P - Model 2915.1ZL


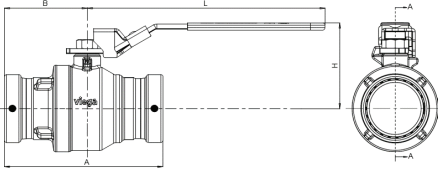
Part No.	Size (in)		A (in)		L (in)	
	1	2	Dec	Frac	Dec	Frac
79850	1½	½	1.95	1 ¹⁵ / ₁₆	2.78	2¾
79855	2	½	2.38	2 ³ / ₈	3.21	3 ³ / ₁₆
79860	2	¾	2.42	2 ⁷ / ₁₆	3.33	3 ⁵ / ₁₆

Viega ProPress Reducer FTG x P - Model 0915.1XL


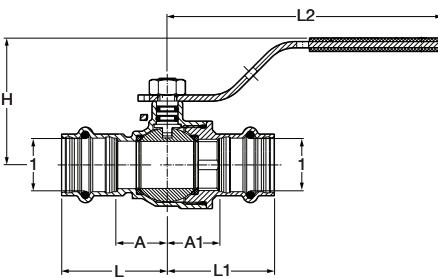
Part No.	Size (in)		A (in)		L (in)	
	1	2	Dec	Frac	Dec	Frac
20814	2½	1	3.61	3 ⁵ / ₈	4.52	4½
20815	2½	1¼	3.47	3½	4.51	4½
20813	2½	1½	3.41	3 ⁷ / ₁₆	4.84	4 ¹³ / ₁₆
20758	2½	2	2.35	2 ³ / ₈	3.94	3 ¹⁵ / ₁₆
20817	3	1¼	3.96	3 ¹⁵ / ₁₆	5.00	5
20818	3	1½	3.91	3 ¹⁵ / ₁₆	5.34	5 ⁵ / ₁₆
20763	3	2	2.98	3	4.57	4 ⁹ / ₁₆
20768	3	2½	2.76	2¾	4.45	4 ⁷ / ₁₆
20773	4	2	4.58	4 ⁹ / ₁₆	6.17	6 ³ / ₁₆
20778	4	2½	4.45	4 ⁷ / ₁₆	6.15	6 ¹ / ₈
20783	4	3	4.17	4 ³ / ₁₆	6.14	6 ¹ / ₈

Viega ProPress Ball Valve Zero Lead Bronze P x P - Model 2971.1ZL


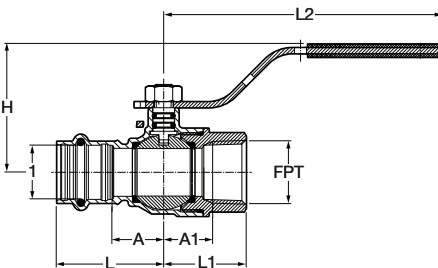
Part No.	Size (in)		A (in)		A1 (in)		L (in)		L1 (in)		L2 (in)		H (in)	
	1	1	Dec	Frac	Dec	Frac	Dec	Frac	Dec	Frac	Dec	Frac	Dec	Frac
79920	½	½	0.75	¾	0.75	¾	1.57	1 ⁹ / ₁₆	1.57	1 ⁹ / ₁₆	4.57	4 ⁹ / ₁₆	1.97	2
79925	¾	¾	0.85	7/8	0.87	7/8	1.75	1¾	1.77	1¾	4.57	4 ⁹ / ₁₆	2.09	2 ¹ / ₁₆
79930	1	1	1.02	1	1.06	1 ¹ / ₁₆	1.93	1 ¹⁵ / ₁₆	1.96	1 ¹⁵ / ₁₆	5.75	5¾	2.46	2 ⁷ / ₁₆
79935	1¼	1¼	1.14	1 ¹ / ₈	1.12	1 ¹ / ₈	2.17	2 ³ / ₁₆	2.15	2 ¹ / ₈	5.75	5¾	2.67	2 ¹¹ / ₁₆
79940	1½	1½	1.46	1 ⁷ / ₁₆	1.25	1¼	2.87	2 ⁷ / ₈	2.67	2 ¹¹ / ₁₆	6.12	6 ¹ / ₈	3.02	3
79950	2	2	1.73	1¾	1.47	1½	3.31	3 ⁵ / ₁₆	3.05	3 ¹ / ₁₆	6.12	6 ¹ / ₈	3.32	3 ⁵ / ₁₆

Viega ProPress Ball Valve Zero Lead Brass P x P - Model 2971.1XL


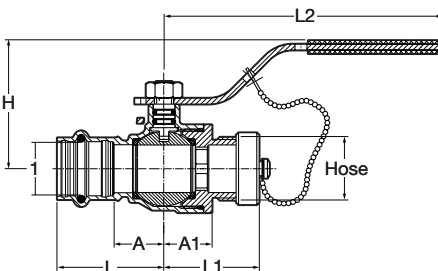
Part No.	Size (in)	A (in)		B (in)		H (in)		L (in)		Weight (lbs)
		Dec	Frac	Dec	Frac	Dec	Frac	Dec	Frac	
78300	2½	7.47	7½	3.91	3 ¹⁵ / ₁₆	4.02	4	11.22	11¼	7.0
78305	3	8.15	8 ¹ / ₈	4.17	4 ³ / ₁₆	4.37	4 ³ / ₈	11.22	11¼	9.7
78310	4	9.72	9¾	4.99	5	5.12	5 ¹ / ₈	11.22	11¼	17.5

Viega ProPress Ball Valve Zero Lead Bronze P x P - Model 2971.3ZL


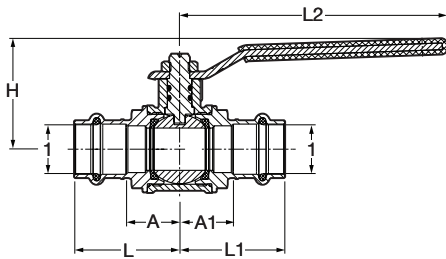
Part No.	Size (in)	A (in)		A1 (in)		L (in)		L1 (in)		L2 (in)		H (in)	
		Dec	Frac	Dec	Frac	Dec	Frac	Dec	Frac	Dec	Frac	Dec	Frac
79923	½ x ½	0.75	¾	0.75	¾	1.57	1 ⁹ / ₁₆	1.57	1 ⁹ / ₁₆	4.57	4 ⁹ / ₁₆	1.97	2
79928	¾ x ¾	0.85	7 ⁸ / ₈	0.87	7 ⁸ / ₈	1.75	1¾	1.77	1¾	4.57	4 ⁹ / ₁₆	2.09	2 ¹ / ₁₆
79933	1 x 1	1.02	1	1.06	1 ¹ / ₁₆	1.93	1 ¹⁵ / ₁₆	1.96	1 ¹⁵ / ₁₆	5.75	5¾	2.46	2 ⁷ / ₁₆
79938	1¼ x 1¼	1.14	1 ¹ / ₈	1.12	1 ¹ / ₈	2.17	2 ³ / ₁₆	2.15	2 ¹ / ₈	5.75	5¾	2.67	2 ¹¹ / ₁₆
79943	1½ x 1½	1.46	1 ⁷ / ₁₆	1.25	1¼	2.87	2 ⁷ / ₈	2.67	2 ¹¹ / ₁₆	6.12	6 ¹ / ₈	3.02	3
79948	2 x 2	1.73	1¾	1.47	1½	3.31	3 ⁵ / ₁₆	3.05	3 ¹ / ₁₆	6.12	6 ¹ / ₈	3.32	3 ⁵ / ₁₆

Viega ProPress Ball Valve Zero Lead Bronze P x FPT - Model 2971.4ZL


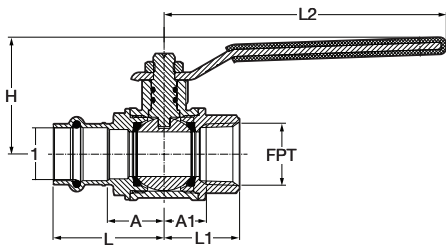
Part No.	Size (in)	A (in)		A1 (in)		L (in)		L1 (in)		L2 (in)		H (in)	
		1	FPT	Dec	Frac	Dec	Frac	Dec	Frac	Dec	Frac	Dec	Frac
79970	½ x ½	0.73	¾	0.66	1 ¹ / ₁₆	1.57	1 ⁹ / ₁₆	1.20	1 ³ / ₁₆	4.57	4 ⁹ / ₁₆	1.97	2
79975	¾ x ¾	0.85	7 ⁸ / ₈	0.79	1 ³ / ₁₆	1.75	1¾	1.35	1¾	4.57	4 ⁹ / ₁₆	2.09	2 ¹ / ₁₆
79980	1 x 1	1.02	1	0.98	1	1.93	1 ¹⁵ / ₁₆	1.63	1 ⁵ / ₈	5.75	5¾	2.46	2 ⁷ / ₁₆

Viega ProPress Ball Valve Zero Lead Bronze P x Hose - Model 2971.6ZL


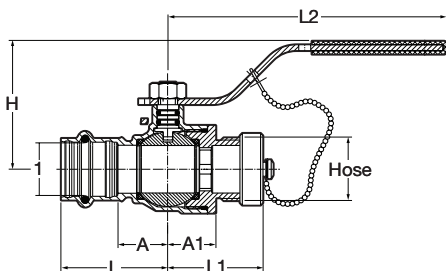
Part No.	Size (in)	A (in)		A1 (in)		L (in)		L1 (in)		L2 (in)		H (in)	
		1	Hose	Dec	Frac	Dec	Frac	Dec	Frac	Dec	Frac	Dec	Frac
79875	½ x ¾ GH	0.75	¾	0.79	1 ³ / ₁₆	1.57	1 ⁹ / ₁₆	1.56	1 ⁹ / ₁₆	4.57	4 ⁹ / ₁₆	1.99	2
79876	¾ x ¾ GH	0.85	7 ⁸ / ₈	0.79	1 ³ / ₁₆	1.75	1¾	1.56	1 ⁹ / ₁₆	4.57	4 ⁹ / ₁₆	2.10	2 ¹ / ₈

Viega ProPress Ball Valve Bronze/Brass P x P - Model 2973


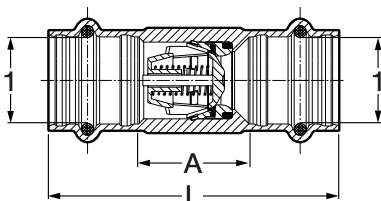
Part No.	Size (in)	A (in)		A1 (in)		L (in)		L1 (in)		L2 (in)		H (in)	
		1	1	Dec	Frac	Dec	Frac	Dec	Frac	Dec	Frac	Dec	Frac
24000	1/2 x 1/2	0.83	13/16	0.83	13/16	1.58	19/16	1.58	19/16	3.94	315/16	1.69	111/16
24005	3/4 x 3/4	0.95	15/16	0.95	15/16	1.86	17/8	1.86	17/8	4.72	43/4	1.97	2
24010	1 x 1	1.18	13/16	1.18	13/16	2.09	21/16	2.09	21/16	4.72	43/4	2.13	21/8
24015	1 1/4 x 1 1/4	1.29	15/16	1.29	15/16	2.31	25/16	2.31	25/16	6.22	61/4	2.87	27/8
24020	1 1/2 x 1 1/2	1.39	13/8	1.39	13/8	2.81	113/16	2.81	213/16	6.22	61/4	3.11	31/8
24025	2 x 2	1.85	17/8	1.85	17/8	3.43	37/16	3.43	37/16	6.22	61/4	3.46	37/16

Viega ProPress Ball Valve Bronze/Brass P x FPT - Model 2973.1


Part No.	Size (in)	A (in)		A1 (in)		L (in)		L1 (in)		L2 (in)		H (in)	
		1	FPT	Dec	Frac	Dec	Frac	Dec	Frac	Dec	Frac	Dec	Frac
24030	1/2 x 1/2	0.83	13/16	0.63	5/8	1.58	19/16	1.16	13/16	3.94	315/16	1.69	111/16
24035	3/4 x 3/4	0.95	15/16	0.70	11/16	1.86	17/8	1.26	11/4	4.72	43/4	1.97	2
24040	1 x 1	1.18	13/16	0.93	15/16	2.09	21/16	1.59	19/16	4.72	43/4	2.13	21/8

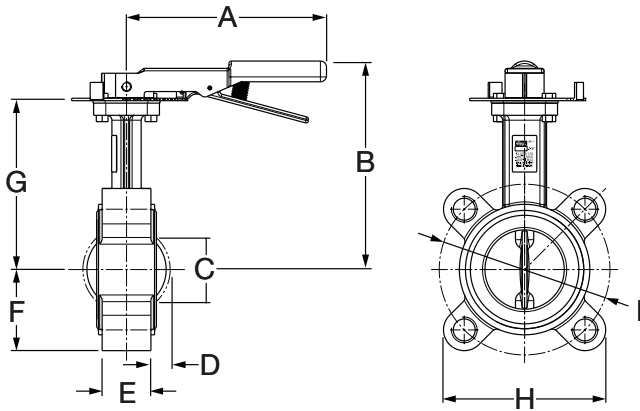
Viega ProPress Ball Valve Bronze/Brass P x Hose - Model 2973.3


Part No.	Size (in)	A (in)		A1 (in)		L (in)		L1 (in)		L2 (in)		H (in)	
		1	Hose	Dec	Frac	Dec	Frac	Dec	Frac	Dec	Frac	Dec	Frac
24090	1/2 x 3/4	0.83	13/16	0.85	7/8	1.58	19/16	1.30	15/16	3.89	37/8	1.67	111/16
24095	3/4 x 3/4	0.95	15/16	0.94	15/16	1.86	17/8	1.39	13/8	4.72	43/4	1.97	2

Viega ProPress Check Valve Zero Lead Bronze P x P - Model 2974ZL


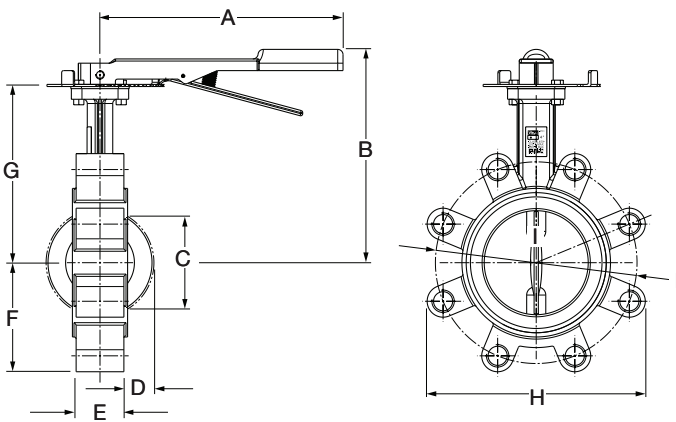
Part No.	Size (in)	A (in)		L (in)	
		1	1	Dec	Frac
79035	1/2 x 1/2	0.87	7/8	2.52	21/2
79040	3/4 x 3/4	1.14	11/8	2.95	215/16
79045	1 x 1	1.34	15/16	3.15	31/8
79050	1 1/4 x 1 1/4	1.69	111/16	3.74	33/4
79055	1 1/2 x 1 1/2	2.09	21/16	4.92	415/16
79060	2 x 2	2.56	29/16	5.71	511/16

Butterfly Valve - Model 2873.81

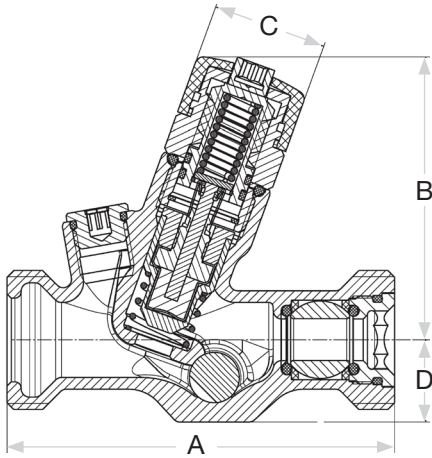


Part No.	Size (in)	A (in)		B (in)		C (in)		D (in)		E (in)		F (in)		G (in)		H (in)		I (in)	
		Dec	Frac	Dec	Frac	Dec	Frac	Dec	Frac	Dec	Frac	Dec	Frac	Dec	Frac	Dec	Frac	Dec	Frac
22074	2½	6.50	6½	7.40	7¾	2.17	2¾	0.43	7/16	1.81	1 13/16	2.64	2 5/8	5.35	5 3/8	5.20	5 3/16	5.51	5½
22075	3	7.28	7¼	7.64	7¾	2.80	2 13/16	0.67	1 1/16	1.81	1 13/16	2.82	2 13/16	5.59	5 9/16	7.01	7	5.98	6

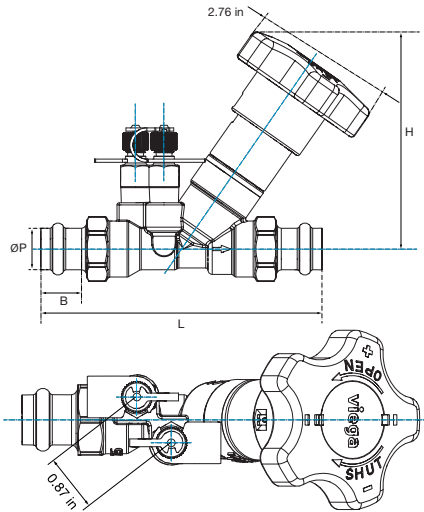
Butterfly Valve - Model 2873.81



Part No.	Size (in)	A (in)		B (in)		C (in)		D (in)		E (in)		F (in)		G (in)		H (in)		I (in)	
		Dec	Frac	Dec	Frac	Dec	Frac	Dec	Frac	Dec	Frac	Dec	Frac	Dec	Frac	Dec	Frac	Dec	Frac
22076	4	9.06	9 1/16	8.47	8½	3.54	3 9/16	0.91	15/16	2.05	2 1/16	3.62	3 5/8	6.42	6 7/16	8.27	8¼	7.48	7½

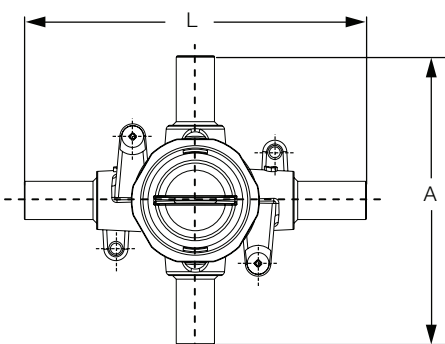
Viega ProPress Automatic Recirculation Regulating Valve Zero Lead - Model 2981.3ZL


Part No.	Size (in)	A (in)		B (in)		C (in)		D (in)	
		Dec	Frac	Dec	Frac	Dec	Frac	Dec	Frac
79901	1	3.66	3 ¹¹ / ₁₆	3.43	3 ⁷ / ₁₆	1.09	1 ¹ / ₁₆	0.79	1 ³ / ₁₆

Viega ProPress Manual Balancing Valve - Model 2980ZL


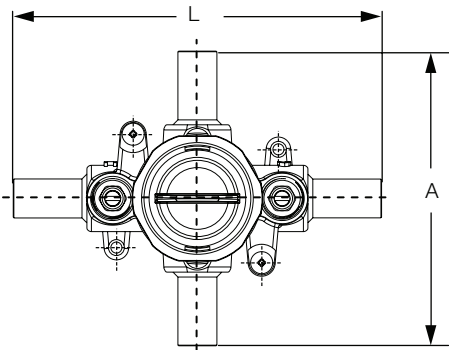
Part No.	Size (in)	ΦP ¹ (in)	H (in)		L (in)		B (in)		Weight (lbs)	Flow Range (GPM)
			Dec	Frac	Dec	Frac	Dec	Frac		
82100	U-½	0.627-0.631	4.06	4 ¹ / ₁₆	5.16	5 ³ / ₁₆	0.83	1 ⁹ / ₁₆	1.23/1.16	0.27-0.71
82105	L-½	0.627-0.631	4.06	4 ¹ / ₁₆	5.16	5 ³ / ₁₆	0.83	1 ⁹ / ₁₆	1.23/1.16	0.49-1.17
82110	½	0.627-0.631	4.06	4 ¹ / ₁₆	5.16	5 ³ / ₁₆	0.83	1 ⁹ / ₁₆	1.23/1.16	0.98-2.35
82115	¾	0.877-0.881	4.06	4 ¹ / ₁₆	5.85	5 ⁷ / ₈	0.91	1 ⁵ / ₁₆	1.43/1.34	2.19-5.15
82120	1	1.128-1.131	4.06	4 ¹ / ₁₆	6.18	6 ³ / ₁₆	0.91	1 ⁵ / ₁₆	1.73/1.55	4.09-9.56
82125	1¼	1.378-1.381	4.85	4 ⁷ / ₈	6.99	7	1.02	1	2.78/2.53	8.56-19.81
82130	1½	1.628-1.632	4.94	4 ¹⁵ / ₁₆	7.92	7 ¹⁵ / ₁₆	1.42	1 ⁷ / ₁₆	3.50/3.16	12.84-29.80
82135	2	2.128-2.132	5.34	5 ⁵ / ₁₆	6.14	6 ¹ / ₈	1.58	1 ⁹ / ₁₆	4.80/4.46	24.09-55.63

¹ Tolerance field

Shower Valve - Model 2842.5


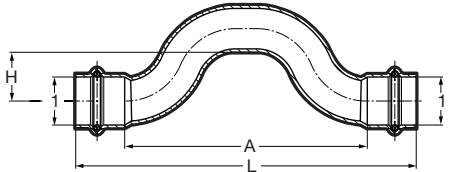
Part No.	Stub Out (in)	A (in)		L (in)	
		Dec	Frac	Dec	Frac
93516	½	4.75	4 ³ / ₄	5.63	5 ⁵ / ₈

Shower Valve - Model 2842.6



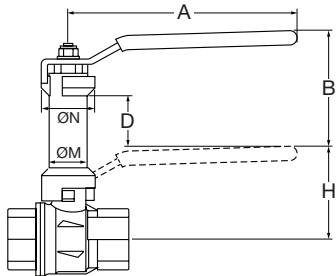
Part No.	Stub Out (in)	A (in)		L (in)	
		Dec	Frac	Dec	Frac
93517	1/2	4.75	4 3/4	5.88	5 7/8

Viega ProPress Cross-Over Copper P x P - Model 2928



Part No.	Size (in)		A (in)		L (in)		H (in)	
	1	1	Dec	Frac	Dec	Frac	Dec	Frac
77742	1/2	1/2	3.62	3 5/8	5.12	5 1/8	0.77	3/4
77747	3/4	3/4	4.49	4 1/2	6.30	6 5/16	0.90	7/8

Viega ProPress Stem Extension Brass - Model 2973.96*



Part No.	Valve Size (in)	ØM (in)	ØN (in)	A (in)		H (in)		B (in)		D (in)	
				Dec	Frac	Dec	Frac	Dec	Frac	Dec	Frac
23449	1/2	0.67	0.98	3.94	3 15/16	1.69	1 11/16	2.22	2 1/4	1.04	1 1/16
23451	3/4	0.79	1.10	4.72	4 3/4	1.97	2	2.46	2 7/16	1.08	1 1/16
23451	1	0.79	1.10	4.72	4 3/4	2.13	2 1/8	2.46	2 7/16	1.08	1 1/16
23453	1 1/4	1.02	1.42	6.22	6 1/4	2.87	2 7/8	2.66	2 11/16	0.81	13/16
23453	1 1/2	1.02	1.42	6.22	6 1/4	3.11	3 1/8	2.66	2 11/16	0.81	13/16
23453	2	1.02	1.42	6.22	6 1/4	3.46	3 7/16	2.66	2 11/16	0.81	13/16

*For use with Models 2973, 2973.1, and 2973.3 Valves

