

Product Instructions

Viega ProPress® Strainer Valve

EN Product Instructions Viega ProPress Strainer Valve

This document is subject to updates. For the most current Viega technical literature please visit www.viega.us.



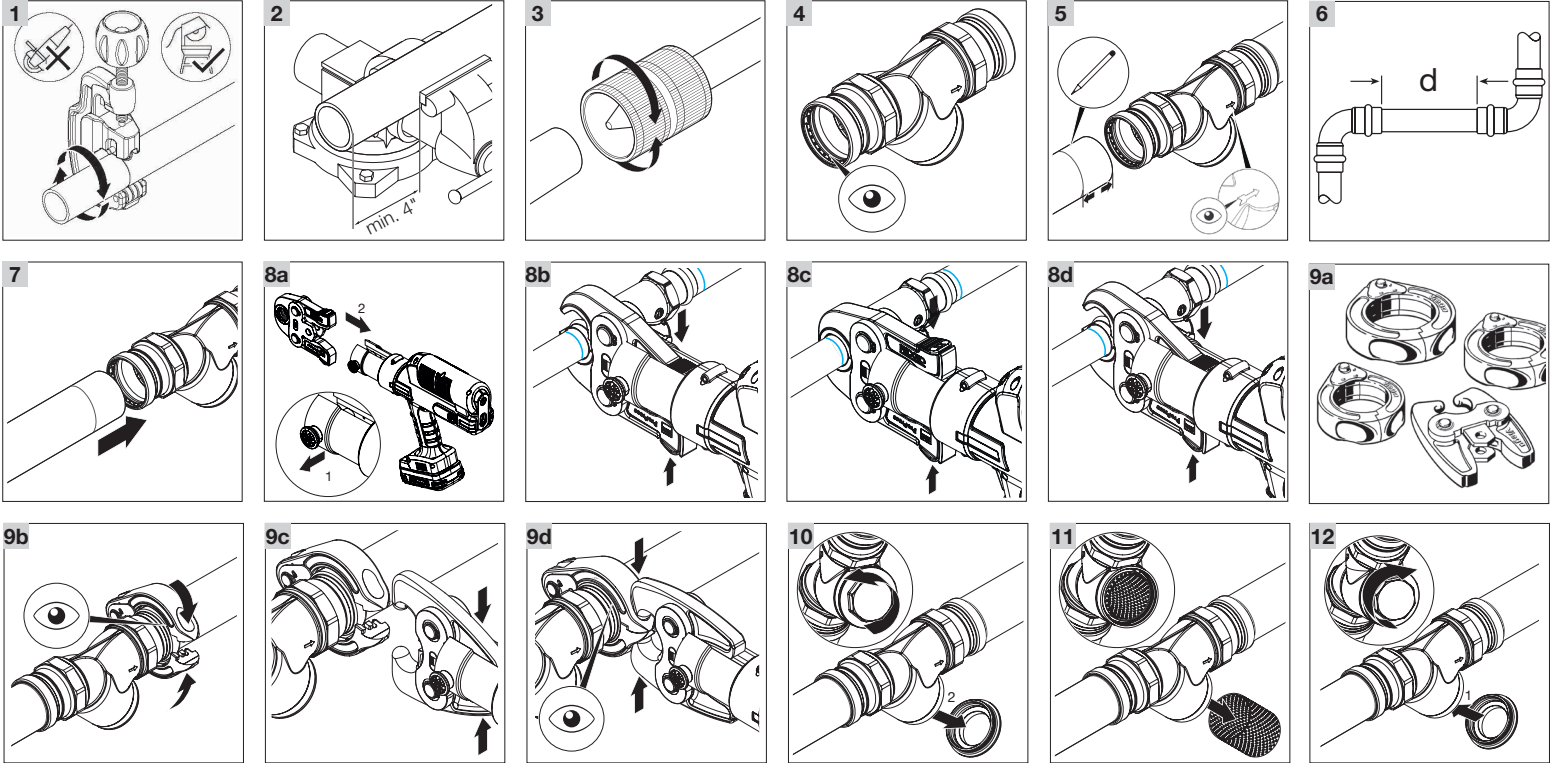
Models 2981.1ZL and 2981.1XL

viega

Viega LLC
585 Interlocken Blvd.
Broomfield, CO 80021

Phone (800) 976-9819
www.viega.us

PI-PP 531218 0424 ProPress Strainer Valve



EN

Viega ProPress Strainer Valve

! Viega products are designed to be installed by licensed and trained plumbing and mechanical professionals who are familiar with Viega products and their installation. **Installation by non-professionals may void Viega LLC's warranty.**

! DANGER!
Read and understand all instructions for installing Viega ProPress fittings. Failure to follow all instructions may result in extensive property damage, serious injury, or death.

! Only valves marked with NSF-61 and NSF-372 are allowed for use in potable water systems.

Install

- 1 Cut copper tubing square using displacement-type cutter or fine-toothed saw.
- 2 Cut tubing a minimum of 4" away from the contact area of the vise to prevent possible damage to the tubing in the press area.

- 3 Remove burr from inside and outside of tubing and prep to proper insertion depth using a preparation tool or fine grit sandpaper.
- 4 Check the sealing element for correct fit. Do not use oils or lubricants.
- 5 Mark proper insertion depth as indicated by the Viega ProPress Insertion Depth Chart. Improper insertion depth may result in improper seal. It is recommended that the depth marking be visible on the completed assembly. Make sure the flow direction indicator on the valve is facing the correct direction.

Viega ProPress Insertion Depth Chart

Tube Size	1/2"	3/4"	1"	1 1/4"	1 1/2"	2"	2 1/2"	3"	4"
Insertion Depth	3/4"	7/8"	1"	1 1/16"	1 1/8"	1 1/4"	1 5/16"	1 3/8"	2 3/8"

i Copper tubing must be free of surface imperfections, including metal stamped print lines, before a ProPress valve is installed.

- 6 Refer to the following chart for minimum distance between fittings. To ensure a correct press, a minimum distance between press fittings must be maintained. Failure to provide this distance may result in an improper seal.

Tube Diameter (in)	d (in)	d (mm)
1/2	0	0
3/4	0	0
1	0	0
1 1/4	7/16	10
1 1/2	5/8	15
2	3/4	20
2 1/2	5/8	15
3	5/8	15
4	5/8	15

- 7 While turning slightly, slide valve onto tubing to the marked depth. End of tubing must contact stop.

! Warning!
Keep extremities and foreign objects away from press tool during pressing operation to prevent injury or incomplete press.

Pressing 1/2" to 2" Valves

- 8a Insert appropriate Viega ProPress jaw into the press tool and push in, holding pin (1) until it locks in place.
- 8b Open the jaw and place at right angle on the valve. Visually check insertion depth using mark on tubing.
- 8c Hold trigger on press tool until press jaws have fully engaged the valve.
- 8d After pressing, open the jaw and remove the press tool. Repeat steps for the other end of the valve.

Pressing 2½" to 4" Valves

- 9a** ProPress 2½" to 4" connections must be performed with rings that are compatible. Do not mix actuators and rings from different manufacturers.
- 9b** Open XL-C ring and place at right angles on the fitting. XL-C ring must be engaged on the fitting bead. Check insertion depth.
- 9c** With V2 actuator inserted into the tool, open the V2 actuator as shown and connect V2 actuator to the XL-C ring.
- 9d** Hold the trigger until the V2 actuator has fully engaged the XL-C ring. Keep extremities and foreign objects away from XL-C ring and V2 actuator during pressing operation to prevent injury or incomplete press. Release V2 actuator from XL-C ring and then remove the XL-C ring from the fitting on completion of press.

Maintenance

- 10** To replace strainer, twist the knob counter-clockwise until lid screws off.
- 11** Remove strainer and debris and clean the strainer before reinstalling.
- 12** Double check the gasket on the cap, as well as the sealing surface on the valve. Screw lid back on in a clockwise motion either by hand or with a wrench.