

Product Instructions

Viega MegaPress® Check Valve

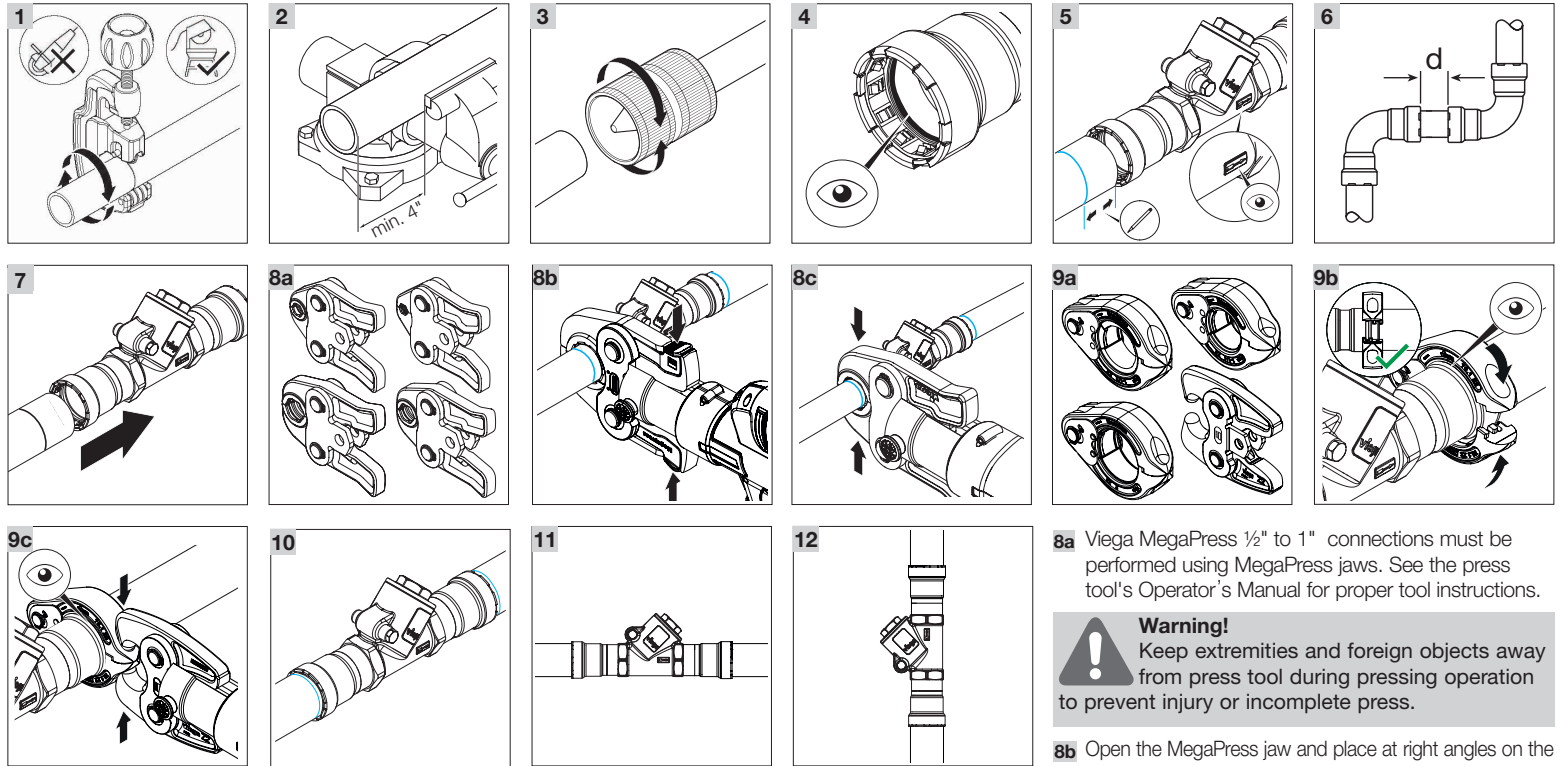


Model 5974.2



Viega LLC
 585 Interlocken Blvd.
 Broomfield, CO 80021
 Phone (800) 976-9819
 www.viega.us

PI-MP 531219 0424 MegaPress Check Valve



8a Viega MegaPress 1/2" to 1" connections must be performed using MegaPress jaws. See the press tool's Operator's Manual for proper tool instructions.

Warning!
 Keep extremities and foreign objects away from press tool during pressing operation to prevent injury or incomplete press.

8b Open the MegaPress jaw and place at right angles on the valve. Visually check insertion depth using mark on the pipe.

8c Start pressing process and hold the trigger until the jaw has engaged the valve. Jaws will automatically release after a full press is made.

9a Viega MegaPress 1 1/4" to 2" connections must be performed with MegaPress rings and V2 actuator. See the tool's Operator's Manual for proper tool instructions.

9b Open the MegaPress ring and place at right angles on the valve. The MegaPress ring must be engaged on the valve bead. Check insertion depth.

9c Place V2 actuator onto the MegaPress ring and start the pressing process. Hold the trigger until the actuator has engaged the MegaPress ring.

10 Remove MegaPress jaw from valve or release V2 actuator from the MegaPress ring and then remove the MegaPress ring from the valve on completion of press. Repeat steps for the other end of the valve.

11 For horizontal installation, the tower must be at the top of the valve.

12 For vertical installation, the flow direction must be flowing upwards from bottom to top.

Warning!
 This valve has two screw-in pieces. Once the valve is pressed, DO NOT attempt to adjust the screw-pieces to the body.

Warning!
 The cap should not be opened.

EN

Viega MegaPress Check Valve

! Viega products are designed to be installed by licensed and trained plumbing and mechanical professionals who are familiar with Viega products and their installation. **Installation by non-professionals may void Viega LLC's warranty.**

DANGER!
Read and understand all instructions for installing Viega MegaPress valves. Failure to follow all instructions may result in extensive property damage, serious injury, or death.

! Only valves marked with NSF-61 and NSF-372 are allowed for use in potable water systems.

1 Cut the pipe square using displacement-type cutter or fine-toothed saw.

2 Keep end of pipe a minimum of 4" away from the contact area of the vise to prevent possible damage to the pipe in the press area.

3 Remove burr from inside and outside of the pipe and prep to proper insertion depth using a preparation tool or fine-grit sandpaper.

4 Check seal and grip ring for correct fit. Do not use oils or lubricants.

5 Mark proper insertion depth as indicated by the Viega MegaPress Insertion Depth Chart. Improper insertion depth may result in improper seal. It is recommended that the depth marking be visible on the completed assembly. Make sure the flow direction indicator on the valve is facing the correct direction.

Viega MegaPress Insertion Depth Chart (in)

Pipe Size	1/2	3/4	1	1 1/4	1 1/2	2
Insertion Depth	1 1/16	1 3/16	1 5/8	1 13/16	1 7/8	2

6 Refer to the chart below for minimum distance between fittings. To ensure a correct press, a minimum distance between press fittings must be maintained. Failure to provide this distance may result in an improper seal.

Pipe Diameter (in)	d (in)	d (mm)
1/2	1/4	6
3/4	1/4	6
1	1/4	6
1 1/4	1/2	13
1 1/2	1/2	13
2	1/2	13

7 While turning slightly, slide valve onto the pipe to the marked depth. End of pipe must contact stop.