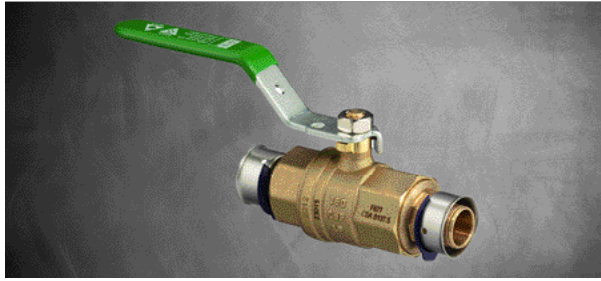


Product Instructions

Viega PureFlow Press Ball Valve



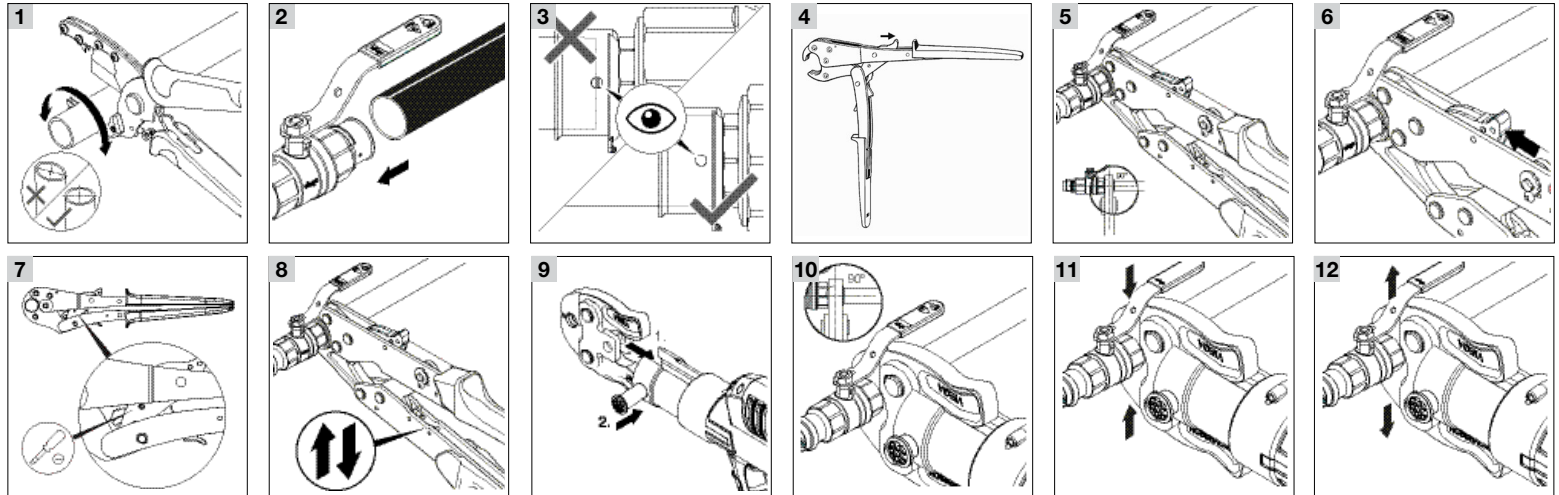
Model 2870ZL and Model 2875ZL (with Drain)

viega

> Viega LLC
585 Interlocken Blvd.
Broomfield, CO 80021

Phone (800) 976-9819
www.viega.us

PI-PF 531224 0225 PureFlow Press Ball Valve



EN

Viega PureFlow Press Ball Valve

! Viega products are designed to be installed by licensed and trained plumbing and mechanical professionals who are familiar with Viega products and their installation. **Installation by non-professionals may void Viega LLC's warranty.**

! DANGER!
Read and understand all instructions for installing PureFlow Press fittings. Failure to follow all instructions may result in extensive property damage, serious injury, or death.

- 1 Square off tubing to proper length. Uneven, jagged, or irregular cuts will produce unsatisfactory connections.
- 2 Insert PureFlow valve into tubing and engage fully.
- 3 Ensure full tubing insertion at view holes in valve. Full insertion means tubing must be completely visible in at least two view holes and partially visible in the one.

i If using hand tools continue with steps 4 to 8. If using power tools skip to steps 9 to 12.

Pressing with a Hand Tool

- 4 For the 1" tool, open the tool handles fully (thumb grip is available to maintain open jaw). Then close tool jaws to engage ratchet (ensure that thumb grip is returned fully forward before closing jaws).

- 5 Position the PureFlow press tool perpendicular over the press sleeve, resting it against the tool locator ring. Close tool jaws to engage ratchet (ensure that thumb grip is returned fully forward before closing jaws). Make sure the PureFlow press tool is properly aligned (see step 7 if it is not).

i The tool locator ring must be in the factory installed position while making a press to ensure a consistent leak-proof connection. It may be necessary to rotate the tool locator ring to avoid interference between the ring and tool.

- 6 Close handles, using trigger to reduce grip span if desired.
- 7 If the PureFlow press tool is not properly aligned with the locator ring, use the emergency release (using a screw driver to turn the emergency release) to open the press tool. Once released, align the PureFlow press tool properly and go back to step 5.

! WARNING!
The connection is not leak-proof when the tool has been opened by emergency release. The tool locator ring must be present to ensure a proper PureFlow Press connection.

- 8 Extend the PureFlow press tool handle and continue ratcheting until automatic tool release occurs at the proper compression force. Repeat the steps for the other end of the valve.

! CAUTION!
Do not press twice.

Pressing with a Power Tool

- 9 Insert the appropriate PureFlow press jaw (1) into the press tool and push in the holding pin (2) until it locks.
- 10 Open jaw and position perpendicular over press sleeve, resting it against the tool locator ring.

i The tool locator ring must be in the factory-installed position while making a press to ensure a consistent leak-proof connection. It may be necessary to rotate the tool locator ring to avoid interference between the ring and tool.

- 11 Start the pressing process; hold the trigger until the jaw has automatically released.
- 12 When press connection is complete, open and remove the jaw. Repeat the steps for the other end of the valve.

! WARNING!
The tool locator ring must be present to ensure a proper PureFlow Press connection.

! CAUTION!
Do not press twice.

! Maintenance Recommendation:
Ball valves must be operated regularly, ideally every 6 months, but at least once a year. Before installing accessories, operate the valve fully opened and closed with the standard handle.