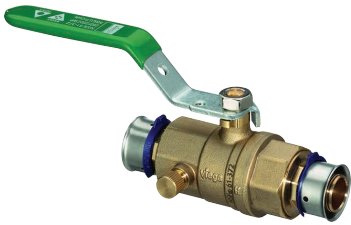


## Tech Data

# Viega PureFlow® Press Ball Valve Model 2875ZL



### Description

Viega PureFlow Press zero lead ball valve is a full port ball valve with a drain intended for potable applications. The ball valve features EPDM sealing

elements and EPDM stem seals.

### Features

- Stainless steel ball
- Plated brass stem
- Reinforced PTFE seats
- Drain option

### Accessories

- Handle, Model 2971.8
- T-Handle, Model 2971.26
- Insulated Handle, Model 2971.46
- Stem Extension, Model 2971.66

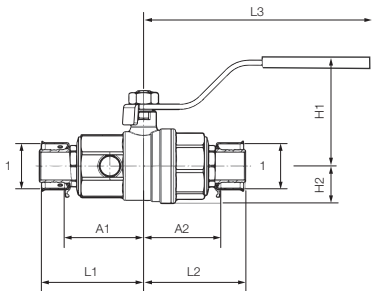
### Ratings

- Temperature Range: 0°F - 180°F
- Max. Operating Pressure: 160 psi

### Approvals

- NSF®-61-372
- NSF®-U.P. Code
- ASME112.4.14/CSA B125.14
- IAPMO/ANSI Z1157
- ASTM F877/F3253/F3347
- NSF/ANSI 359

### Viega PureFlow PureFlow Press Ball Valve – Model 2875ZL



Part No.	Size (in)	H1 (in)	H2 (in)	L1 (in)	L2 (in)	L3 (in)	A1 (in)	A2 (in)	Cv (US gal/min)
	<b>1</b>								
87910	1/2	2.05	0.63	1.97	1.93	4.61	1.50	1.46	4.38
87915	3/4	2.20	0.75	2.09	2.05	4.61	1.57	1.57	12.4



This document is subject to updates. For the most current Viega technical literature, please visit [www.viega.us](http://www.viega.us).



Viega products are designed to be installed by licensed and trained plumbing and mechanical professionals who are familiar with Viega products and their installation. **Installation by non-professionals may void Viega LLC's warranty.**



Zero Lead identifies Viega products meeting the lead free requirements of NSF/ANSI/CAN 61 through testing under NSF/ANSI/CAN 372 (0.25% or less maximum weighted average lead content).

Component	Material
Body	Zero Lead Bronze C87700
Ball	316 Stainless Steel
Seat	Reinforced PTFE
Stem	316 Stainless Steel
Stem Seals	EPDM
Nut	Zinc-Plated Steel



### Viega LLC

585 Interlocken Blvd.  
Broomfield, CO 80021

Phone (800) 976-9819  
[www.viega.us](http://www.viega.us)

TD-PF 0424 PureFlow Press Ball Valve 2875ZL

**viega**