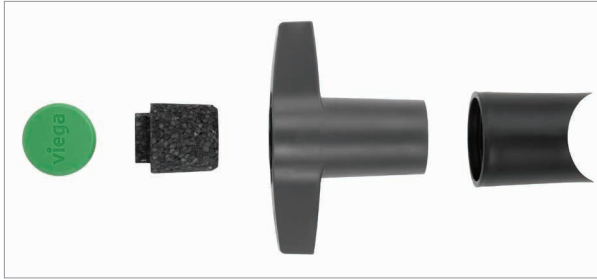


Product Instructions

Viega Thermal Insulated Handle

EN Product Instructions Viega Thermal Insulated Handle

This document is subject to updates. For the most current Viega technical literature, please visit www.viega.us.



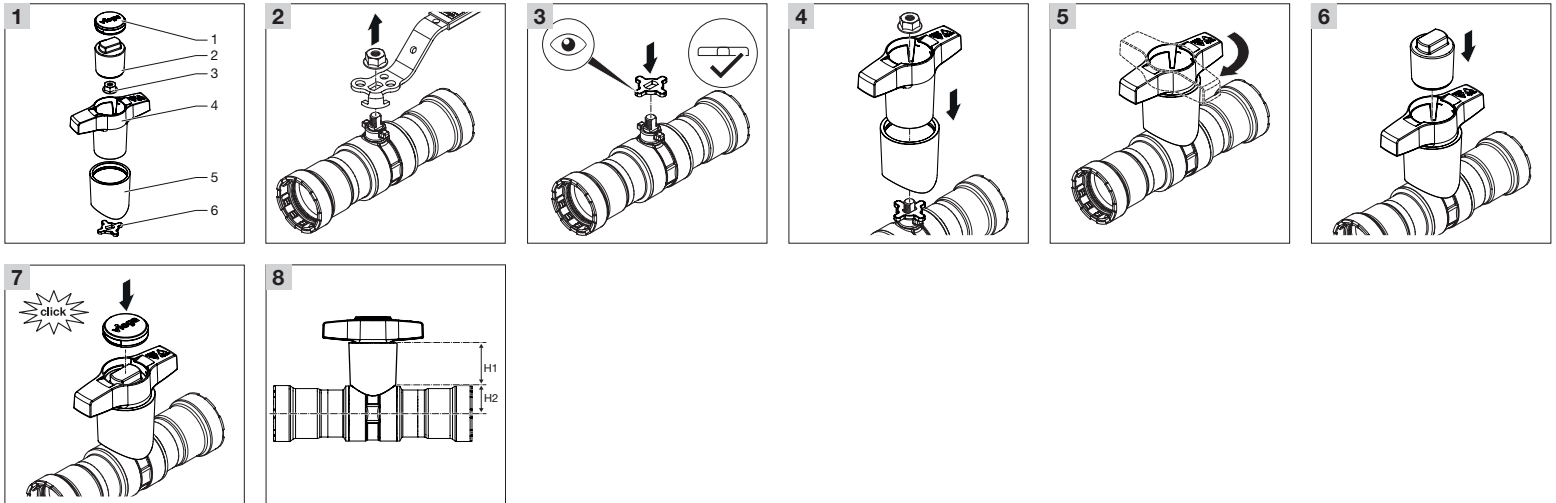
Model 2971.46



Viega LLC
585 Interlocken Blvd.
Broomfield, CO 80021

Phone (800) 976-9819
www.viega.us

PI-MP-PP 530914 0623 Insulated Handle



EN

Viega Thermal Insulated Handle Model 2971.46

! Viega products are designed to be installed by licensed and trained plumbing and mechanical professionals who are familiar with Viega products and their installation. **Installation by non-professionals may void Viega LLC's warranty.**

i This model can be used for ProPress Zero Lead 2-piece Ball Valves and MegaPress 2-piece Ball Valves from 1/2" to 2". It cannot be used with 3-piece Ball Valves.

- 5 Turn the handle to check the function.
- 6 Insert the insulating plug into the handle as far as it will go.
- 7 Insert the cap onto the handle.
- 8 Dimensions for each size:

Size (in)	H1 Dimension (in)	H2 Dimension (in)
1/2	1.31	0.58
3/4	1.31	0.72
1	1.69	0.88
1 1/4	1.69	1.14
1 1/2	2.16	1.36
2	2.16	1.65

- 1 Confirm all components are present and free of defects (1-Cap, 2-Insulation Plug, 3-Nut, 4-Handle, 5-Sleeve, 6-Plate).
- 2 Turn stem nut in counterclockwise direction while holding the valve handle. Remove stem nut and handle from stem.
- 3 Place the plate on the handle. The rounded side must face the housing.
- 4 Slide the sleeve onto the handle, position the handle on the stem and tighten the nut hand-tight but with max. 44-88 in-lb. A 13mm socket wrench is required.