

## Dimensional Document

# Viega ProPress® Stainless Fittings

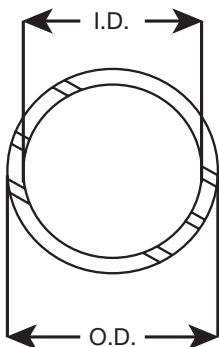


This document is subject to updates. For the most current Viega technical literature, please visit [www.viega.us](http://www.viega.us).



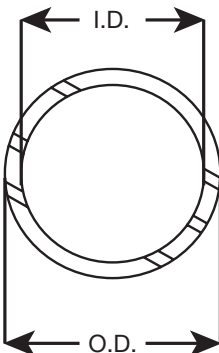
Viega products are designed to be installed by licensed and trained plumbing and mechanical professionals who are familiar with Viega products and their installation. **Installation by non-professionals may void Viega LLC's warranty.**

### ProPress Stainless Tubing – Model 4003

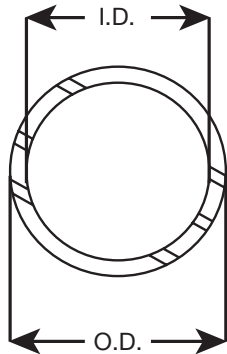


Part No.	Size (in)	O.D. (in)	I.D. (in)	Wall Thickness (in)	Length (ft)
<b>316</b>					
82000	½	0.63	0.50	0.06	20
82005	¾	0.88	0.75	0.06	20
82010	1	1.13	1.00	0.06	20
82015	1¼	1.38	1.26	0.06	20
82020	1½	1.63	1.50	0.06	20
82025	2	2.13	2.00	0.06	20

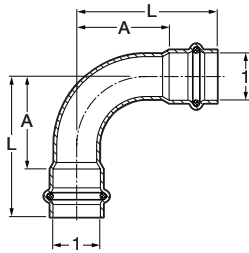
### ProPress Stainless Tubing – Model 4007XL



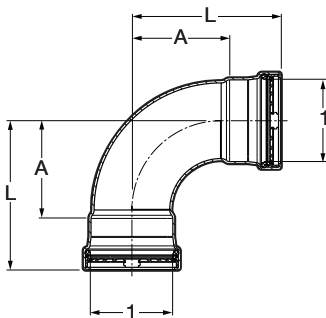
Part No.	Size (in)	O.D. (in)	I.D. (in)	Wall Thickness (in)	Length (ft)
<b>316</b>					
82042	2½	2.63	2.47	0.08	20
82050	3	3.13	2.97	0.08	20
82055	4	4.13	3.97	0.08	20

**ProPress 316 ECO Tubing – Models 4008 / 4008XL**


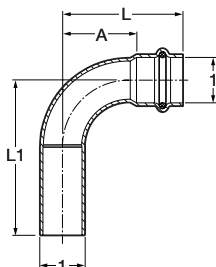
Part No.	Size (in)	O.D. (in)	I.D. (in)	Wall Thickness (in)	Length (ft)
<b>316</b>					
82150	½	0.63	0.55	0.04	20
82155	¾	0.88	0.78	0.05	20
82160	1	1.13	1.03	0.05	20
82165	1¼	1.38	1.26	0.06	20
82170	1½	1.63	1.51	0.06	20
82175	2	2.13	2.01	0.06	20
82180	2½	2.63	2.47	0.08	20
82185	3	3.13	2.97	0.08	20
82190	4	4.13	3.97	0.08	20

**ProPress Stainless 90° Elbow P x P – Model 4016**


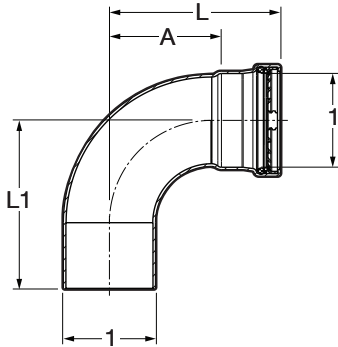
Part No.	Size (in)	A (in)	L (in)
<b>316</b>			
	<b>1</b>		
80400	½	1.12	1.87
80405	¾	1.73	2.64
80410	1	1.87	2.78
80415	1¼	1.65	2.69
80420	1½	1.98	3.41
80425	2	2.55	4.14

**ProPress Stainless 90° Elbow P x P – Model 4016XL**


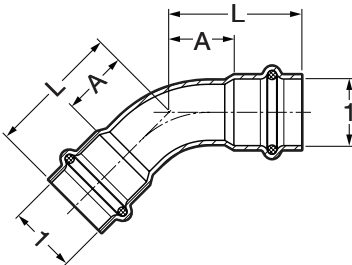
Part No.	Size (in)	A (in)	L (in)
<b>316</b>			
	<b>1 1</b>		
80430	2½ x 2½	3.19	4.88
80435	3 x 3	3.76	5.73
80440	4 x 4	4.86	7.22

**ProPress Stainless 90° Elbow FTG x P – Model 4016.1**


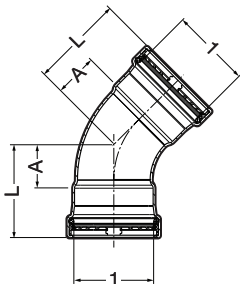
Part No.	Size (in)	A (in)	L (in)	L1 (in)
<b>316</b>				
	<b>1</b>			
80490	½	1.12	1.87	1.99
80495	¾	1.45	2.35	3.03
80500	1	1.87	2.78	3.27
80505	1¼	1.65	2.69	2.76
80510	1½	1.98	3.41	3.48
80515	2	2.55	4.14	4.20

**ProPress Stainless 90° Street Elbow P x FTG – Model 4016.1XL**


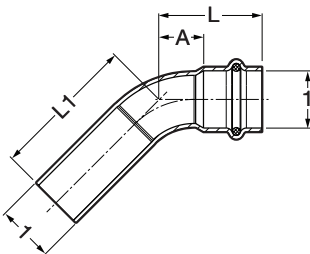
Part No.	Size (in)	A (in)	L (in)	L1 (in)
<b>316</b>	<b>1 1</b>			
80520	2½ x 2½	3.19	4.88	4.80
80525	3 x 3	3.76	5.73	5.63
80530	4 x 4	4.86	7.22	7.13

**ProPress Stainless 45° Elbow P x P – Model 4026**


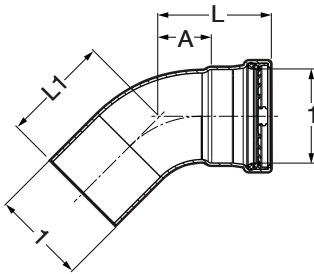
Part No.	Size (in)	A (in)	L (in)
<b>316</b>	<b>1</b>		
80445	½	0.57	1.32
80450	¾	0.87	1.77
80455	1	0.89	1.79
80460	1¼	0.69	1.72
80465	1½	0.82	2.25
80470	2	1.06	2.64

**ProPress Stainless 45° Elbow P x P – Model 4026XL**


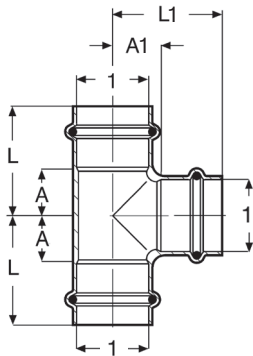
Part No.	Size (in)	A (in)	L (in)
<b>316</b>	<b>1 1</b>		
80475	2½ x 2½	1.48	3.18
80480	3 x 3	1.73	3.70
80485	4 x 4	2.19	4.55

**ProPress Stainless 45° Elbow FTG x P – Model 4026.1**


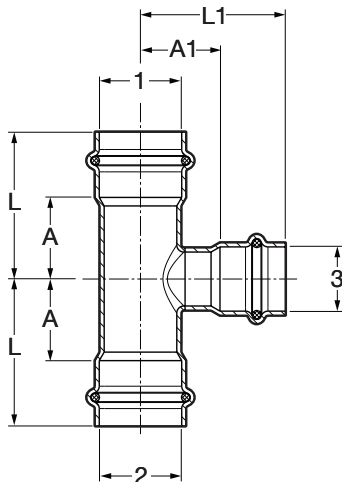
Part No.	Size (in)	A (in)	L (in)	L1 (in)
<b>316</b>	<b>1</b>			
80535	½	0.57	1.32	1.46
80540	¾	0.69	1.59	2.27
80545	1	0.89	1.79	2.28
80550	1¼	0.69	1.72	1.79
80555	1½	0.82	2.25	2.32
80560	2	1.06	2.64	2.71

**ProPress Stainless 45° Street Elbow P x FTG – Model 4026.1XL**


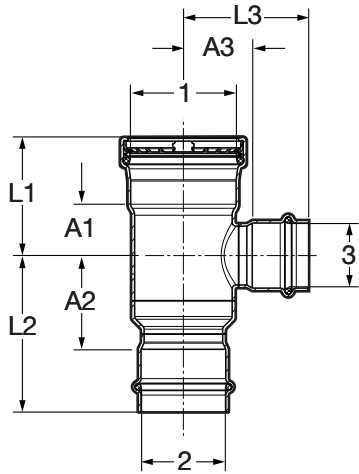
Part No.	Size (in)	A (in)	L (in)	L1 (in)
<b>316</b>	<b>1 1</b>			
80565	2½ x 2½	1.48	3.18	3.10
80570	3 x 3	1.73	3.70	3.60
80575	4 x 4	2.19	4.55	4.45

**ProPress Stainless Tee P x P x P – Model 4018**


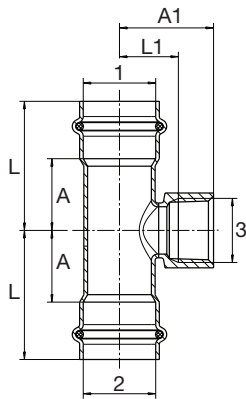
Part No.	Size (in)	A (in)	A1 (in)	L (in)	L1 (in)
<b>316</b>	<b>1</b>				
80580	½	0.75	0.87	1.50	1.61
80585	¾	0.96	0.96	1.86	1.86
80590	1	1.13	1.18	2.04	2.09
80595	1¼	1.04	1.05	2.08	2.07
80600	1½	1.26	1.22	2.69	2.65
80605	2	1.54	1.53	3.12	3.11

**ProPress Stainless Tee P x P x P – Model 4018**


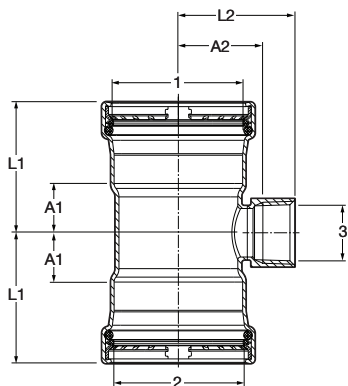
Part No.	Size (in)	A (in)	A1 (in)	L (in)	L1 (in)
<b>316</b>	<b>1 2 3</b>				
80630	¾ x ¾ x ½	0.96	0.98	1.86	1.73
80640	1 x 1 x ½	1.13	1.13	2.04	1.88
80650	1 x 1 x ¾	1.13	1.10	2.04	2.01
80660	1¼ x 1¼ x ½	0.75	1.28	1.78	2.03
80670	1¼ x 1¼ x ¾	0.83	1.25	1.86	2.16
80680	1¼ x 1¼ x 1	1.04	1.33	2.08	2.24
80690	1½ x 1½ x ½	1.26	1.39	2.69	2.14
80700	1½ x 1½ x ¾	1.26	1.37	2.69	2.27
80710	1½ x 1½ x 1	1.26	1.44	2.69	2.35
80720	2 x 2 x ½	0.71	1.65	2.30	2.40
80730	2 x 2 x ¾	0.71	1.63	2.30	2.53
80740	2 x 2 x 1	0.83	1.70	2.41	2.61
80750	2 x 2 x 1½	1.15	1.49	2.73	2.91

**ProPress Stainless Tee P x P x P – Model 4018XL**


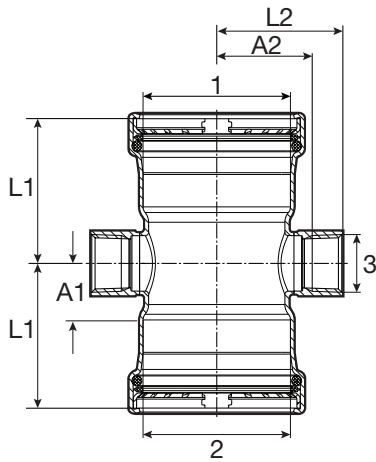
Part No.	Size (in)			A1 (in)	A2 (in)	A3 (in)	L1 (in)	L2 (in)	L3 (in)
	1	2	3						
80753	2½	2	1½	1.30	2.37	1.74	2.99	3.96	3.17
80752	2½	2	2	1.54	2.69	1.78	3.23	4.27	3.37
80751	2½	2½	1½	1.30	1.30	1.74	2.99	2.99	3.17
80760	2½	2½	2	1.54	1.54	1.78	3.23	3.23	3.37
80610	2½	2½	2½	1.83	1.83	1.87	3.52	3.52	3.56
80782	3	3	1¼	1.24	1.24	1.96	3.21	3.21	2.99
80781	3	3	1½	1.32	1.32	2.00	3.29	3.29	3.43
80770	3	3	2	1.56	1.56	2.04	3.52	3.52	3.62
80780	3	3	2½	1.85	1.85	2.13	3.82	3.82	3.82
80615	3	3	3	2.07	2.07	2.15	4.04	4.04	4.11
80791	4	4	1½	1.36	1.36	2.51	3.72	3.72	3.94
80790	4	4	2	1.59	1.59	2.55	3.96	3.96	4.13
80800	4	4	2½	1.89	1.89	2.64	4.25	4.25	4.33
80810	4	4	3	2.11	2.11	2.66	4.47	4.47	4.63
80620	4	4	4	2.60	2.60	2.66	4.96	4.96	5.02

**ProPress Stainless Reducing Tee P x P x FPT – Model 4017.2**


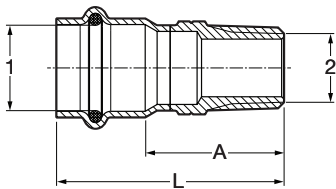
Part No.	Size (in)			A (in)	A1 (in)	L (in)	L1 (in)
	1	2	3				
80820	¾	¾	½ FPT	0.96	1.26	1.86	0.76
80830	¾	¾	¾ FPT	0.96	1.34	1.86	0.78
80840	1	1	½ FPT	1.13	1.41	2.04	0.87
80850	1	1	¾ FPT	1.13	1.48	2.04	0.93
80860	1¼	1¼	½ FPT	0.75	1.56	1.78	1.02
80870	1¼	1¼	¾ FPT	0.83	1.63	1.86	1.08
80880	1¼	1¼	1 FPT	1.04	1.75	2.08	1.09
80890	1½	1½	½ FPT	1.26	1.67	2.69	1.13
80900	1½	1½	¾ FPT	1.26	1.75	2.69	1.19
80910	1½	1½	1 FPT	1.26	1.87	2.69	1.20
80920	2	2	½ FPT	0.71	1.93	2.30	1.39
80930	2	2	¾ FPT	0.71	2.01	2.30	1.45
80940	2	2	1 FPT	0.83	2.13	2.41	1.50

**ProPress Stainless Reducing Tee P x P x FPT – Model 4017.2XL**


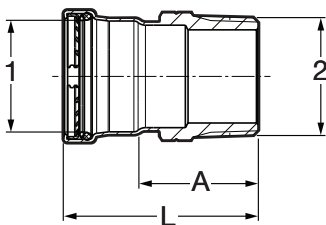
Part No.	Size (in)			A1 (in)	A2 (in)	L1 (in)	L2 (in)
	1	2	3				
80950	2½	2½	¾	1.02	1.73	2.72	2.28
80960	2½	2½	1	1.02	1.74	2.72	2.38
80970	3	3	¾	1.04	1.98	3.01	2.54
80980	3	3	1	1.04	1.98	3.01	2.64
80990	4	4	¾	1.08	2.50	3.44	3.05
81000	4	4	1	1.08	2.49	3.44	3.15

**ProPress Stainless Cross P x P x FPT x FPT – Model 4044.2XL**


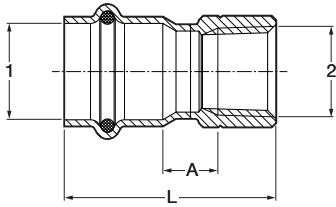
Part No.	Size (in)			A1 (in)	A2 (in)	L1 (in)	L2 (in)
	1	2	3				
80067	2½	2½	¾	1.02	1.73	2.62	2.28
80069	3	3	¾	1.04	1.98	3.01	2.54
80068	4	4	¾	1.08	2.50	3.44	3.05

**ProPress Stainless Adapter P x MPT – Model 4011**


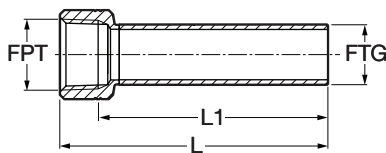
Part No.	Size (in)		A (in)	L (in)
	1	2		
80010	½	½ MPT	1.37	2.11
80015	½	¾ MPT	1.44	2.19
80020	¾	½ MPT	1.42	2.32
80025	¾	¾ MPT	1.46	2.36
80030	¾	1 MPT	1.71	2.62
80035	1	¾ MPT	1.47	2.37
80040	1	1 MPT	1.74	2.65
80045	1¼	1¼ MPT	1.89	2.92
80050	1½	1½ MPT	1.94	3.37
80055	2	2 MPT	2.10	3.68

**ProPress Stainless Adapter P x MPT – Model 4011XL**


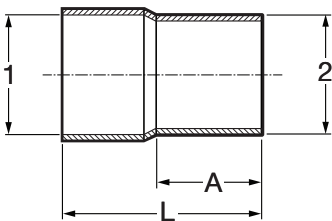
Part No.	Size (in)		A (in)	L (in)
	1	2		
80060	2½	2½ MPT	2.99	4.69
80065	3	3 MPT	3.09	5.06
80070	4	4 MPT	3.13	5.49

**ProPress Stainless Adapter P x FPT – Model 4012**


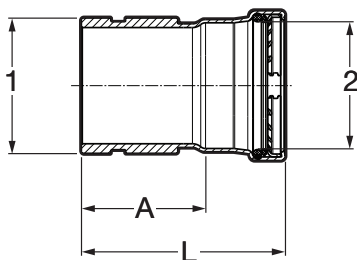
Part No. 316	Size (in)		A (in)	L (in)
	1	2		
80080	1/2 x 1/2 FPT		0.54	1.82
80085	3/4 x 1/2 FPT		0.51	1.95
80090	3/4 x 3/4 FPT		0.57	2.03
80092	1 x 1/2 FPT		0.62	2.06
80095	1 x 3/4 FPT		0.62	2.08
80100	1 x 1 FPT		0.61	2.18
80105	1 1/4 x 1 1/4 FPT		0.62	2.33
80110	1 1/2 x 1 1/4 FPT		0.69	2.80
80115	1 1/2 x 1 1/2 FPT		0.69	2.80
80075	2 x 1 FPT		0.75	2.99
80120	2 x 1 1/2 FPT		0.73	2.99
80125	2 x 2 FPT		0.71	2.99

**ProPress 316 Instrument Adapter – Model 4012.5**


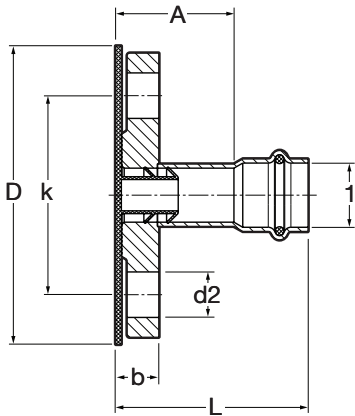
Part No. 316	Size (in)		L (in)	L1 (in)
	FPT x FTG			
80126	1/2 x 1/2		4.06	3.52
80127	3/4 x 3/4		3.94	3.38

**ProPress Stainless Adapter BW (IPS) x FTG – Model 4013.1XL**


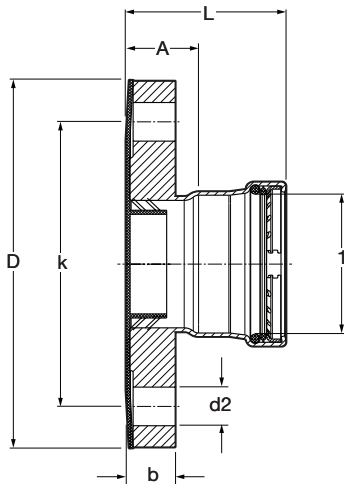
Part No. 316	Size (in)		A (in)	L (in)
	1 (IPS)	2 (CTS)		
80081	2 1/2 ID	2 1/2 OD	2.32	4.37
80082	3 ID	3 OD	2.60	4.57
80083	4 ID	4 OD	2.99	5.16

**ProPress Stainless Adapter Groove x P – Model 4013.2XL**


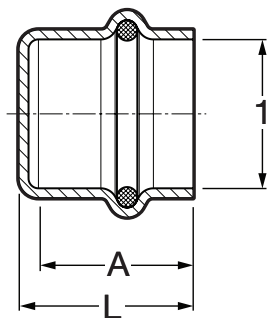
Part No. 316	Size (in)		A (in)	L (in)
	1 G (IPS)	2		
80064	2 1/2	2 1/2	2.64	4.33
80061	3	3	2.66	4.63
80063	4	4	2.66	5.02

**ProPress Stainless Adapter Flange P x Flange – Model 4059**


Part No.	Size (in)	b (in)	A (in)	L (in)	k (in)	D (in)	d2 (in)
<b>316</b>	<b>1</b>						
81035	½	0.46	1.72	2.46	2.36	3.54	0.63
81040	¾	0.52	1.66	2.57	2.76	3.94	0.63
81045	1	0.58	1.60	2.51	3.11	4.33	0.63
81050	1¼	0.64	1.66	2.69	3.50	4.53	0.63
81055	1½	0.70	1.41	2.83	3.86	4.92	0.63
81060	2	0.77	2.30	3.86	4.76	5.91	0.75

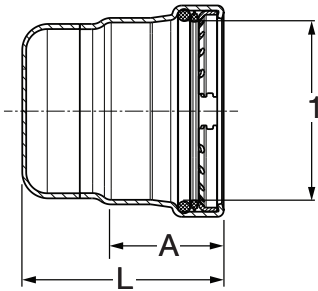
**ProPress Stainless Adapter Flange P x Flange – Model 4059XL**


Part No.	Size (in)	b (in)	A (in)	L (in)	k (in)	D (in)	d2 (in)
<b>316</b>	<b>1</b>						
81065	2½	0.89	1.35	3.04	5.51	7.09	0.75
81070	3	0.96	1.39	3.40	5.98	7.48	0.75
81075	4	0.96	1.40	3.77	7.52	9.06	0.75

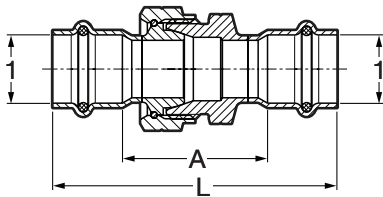
**ProPress Stainless Cap P – Model 4056**


Part No.	Size (in)	A (in)	L (in)
<b>316</b>	<b>1</b>		
80355	½	0.70	0.82
80360	¾	0.93	1.04
80365	1	0.94	1.06
80370	1¼	1.04	1.20
80375	1½	1.44	1.59
80380	2	1.59	1.74

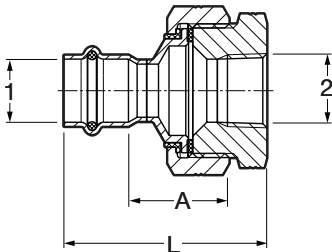


**ProPress Stainless Cap P – Model 4056.1XL**


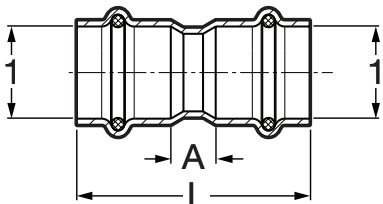
Part No.	Size (in)	A (in)	L (in)
<b>316</b>	<b>1</b>		
80385	2½	1.69	3.01
80390	3	1.97	3.33
80395	4	2.36	3.72

**ProPress Stainless Union P x P – Model 4060**


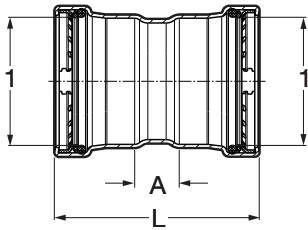
Part No.	Size (in)	A (in)	L (in)
<b>316</b>	<b>1</b>		
81005	½	1.87	3.37
81010	¾	1.89	3.70
81015	1	2.25	4.06
81020	1¼	2.25	4.31
81025	1½	2.68	5.53
81030	2	2.95	6.12

**ProPress 316 Dielectric Union P x FPT – Model 4067**


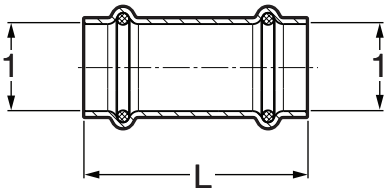
Part No.	Size (in)	A (in)	L (in)
<b>316</b>	<b>1 2</b>		
80071	½ x ½ FPT	1.28	2.57
80078	¾ x ¾ FPT	1.39	2.85
80073	1 x 1 FPT	1.25	2.81
80074	1¼ x 1¼ FPT	1.33	3.04
80076	1½ x 1½ FPT	1.54	3.64
80077	2 x 2 FPT	1.72	4.00

**ProPress Stainless Coupling with Stop P x P – Model 4015**


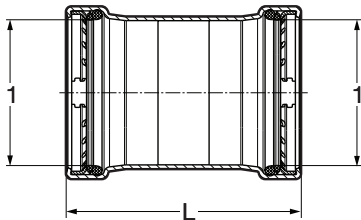
Part No.	Size (in)	A (in)	L (in)
<b>316</b>	<b>1</b>		
80265	½	0.35	1.85
80270	¾	0.43	2.24
80275	1	0.39	2.20
80280	1¼	0.47	2.54
80285	1½	0.36	3.21
80290	2	0.47	3.64

**ProPress Stainless Coupling with Stop P x P – Model 4015XL**


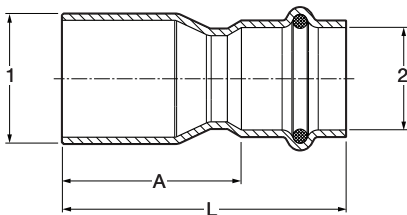
Part No. 316	Size (in)	A (in)	L (in)
80295	2½ x 2½	0.95	4.33
80300	3 x 3	0.98	4.92
80305	4 x 4	1.06	5.79

**ProPress Stainless Coupling No Stop P x P – Model 4015.5**


Part No. 316	Size (in)	L (in)
80310	½	1.87
80315	¾	2.27
80320	1	2.19
80325	1¼	2.54
80330	1½	3.27
80335	2	3.66

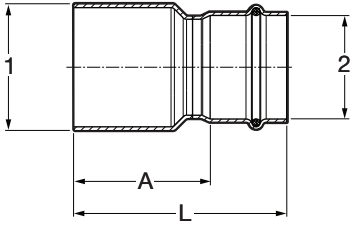
**ProPress Stainless Coupling No Stop P x P – Model 4015.5XL**


Part No. 316	Size (in)	L (in)
80340	2½ x 2½	4.33
80345	3 x 3	4.92
80350	4 x 4	5.79

**ProPress Stainless Reducer FTG x P – Model 4015.1**


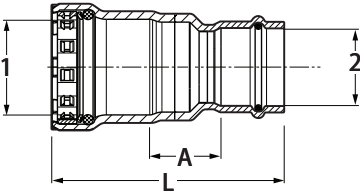
Part No. 316	Size (in)	A (in)	L (in)
80160	¾ x ½	1.54	2.28
80165	1 x ½	1.84	2.59
80170	1 x ¾	1.56	2.46
80175	1¼ x ½	2.25	3.00
80180	1¼ x ¾	1.93	2.83
80185	1¼ x 1	1.81	2.72
80190	1½ x ½	3.03	3.78
80195	1½ x ¾	2.64	3.54
80200	1½ x 1	2.50	3.41
80205	1½ x 1¼	2.26	3.29
80210	2 x ½	3.75	4.50
80215	2 x ¾	3.48	4.39
80220	2 x 1	3.08	3.99
80225	2 x 1¼	2.94	3.97
80230	2 x 1½	2.59	4.02

**ProPress Stainless Reducer FTG x P – Model 4015.1XL**



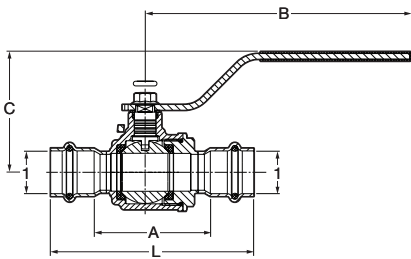
Part No. 316	Size (in)	A (in)	L (in)
	1 2		
80235	2½ x 2	2.85	4.43
80240	3 x 2	3.38	4.96
80245	3 x 2½	3.21	4.90
80250	4 x 2	4.26	5.85
80255	4 x 2½	4.09	5.79
80260	4 x 3	3.88	5.85

**ProPress to MegaPress Transition Coupling, Stainless Steel, P x P – Model 5113**



Part No. 316	Size (in)	A (in)	L (in)
	1 (IPS) 2 (CTS)		
90465	½ x ½	1.07	2.93
90470	¾ x ¾	1.07	3.17
90475	1 x 1	1.11	3.40
90890	1¼ x 1¼	1.11	4.00
90485	1½ x 1½	1.21	4.55
90490	2 x 2	1.23	4.82

**ProPress 316 Ball Valve P x P – Model 4070**



Part No. 316	Size (in)	A (in)	L (in)	B (in)	C (in)
1					
81080	½	2.06	3.56	5.55	2.44
81085	¾	2.42	4.23	5.55	2.52
81090	1	2.76	4.59	5.55	2.68
81095	1¼	3.17	5.23	6.10	3.09
81100	1½	3.65	6.50	6.10	3.34
81105	2	4.15	7.32	6.10	3.66