

Product Instructions

Viega ProPress® Drain Valve for the ProPress Manual Balance Valve

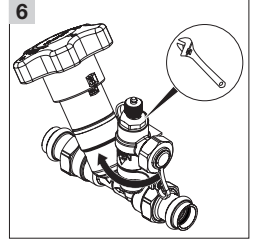
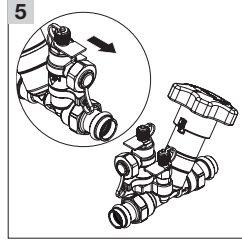
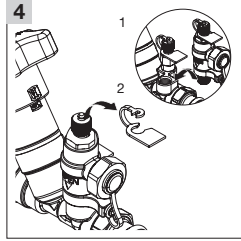
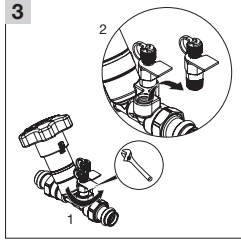
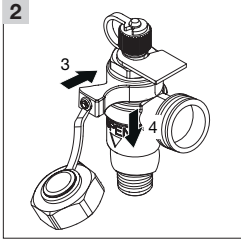
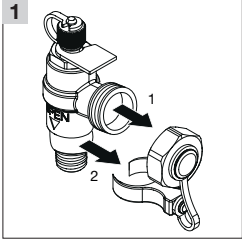


viega

Viega LLC
585 Interlocken Blvd.
Broomfield, CO 80021

Phone (800) 976-9819
www.viega.us

PI-PP 530822 0822 ProPress Drain Valve



EN

Viega ProPress Drain Valve

For use with ProPress Manual Balancing Valve

! Viega products are designed to be installed by licensed and trained plumbing and mechanical professionals who are familiar with Viega products and their installation. **Installation by non-professionals may void Viega LLC's warranty.**

DANGER! **!** **Read and understand all instructions for installing Viega ProPress fittings.** Failure to follow all instructions may result in extensive property damage, serious injury, or death.

- 1** To drain the fluid, remove the cap (1), connect the drain line, and remove the safety spring (2).
- 2** Push down the drain tab tube (4) to release the fluid. To lock the drain, place the spring above the tab (3).
- 3** To assemble the drain valve, ensure that the system is pressure-free. Remove the hot or cold PT-port and make sure that the valve is not twisted in the process.
- 4** Screw-in the drain valve by hand. If necessary, swap the colored tag.
- 5** Make sure that the drain connection points in the same direction as the pipe.
- 6** Use the wrench surfaces to finalize the screw-in process.

i Use only potable water approved sealants.

i Do not remove model from packaging prior to installation. Valves are delivered in the fully open position. More detailed information about flow and settings in the technical documentation.