

Product Instructions

Viega MegaPress® 316 Check Valve



Model 5174

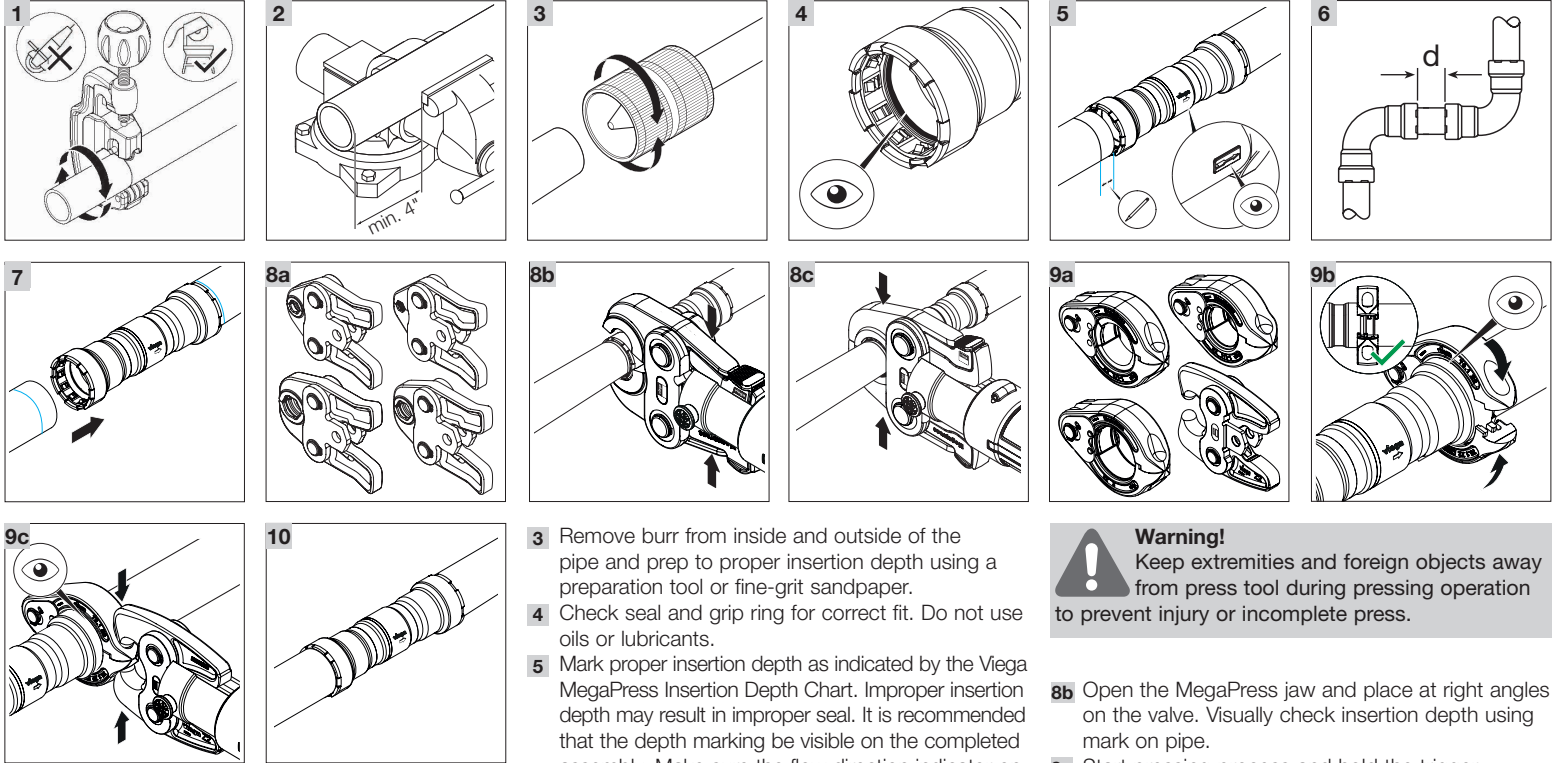


Viega LLC
 585 Interlocken Blvd.
 Broomfield, CO 80021
 Phone (800) 976-9819
 www.viega.us

EN Product Instructions Viega MegaPress 316 Check Valve

This document is subject to updates. For the most current Viega technical literature, please visit www.viega.us.

PI-MP 531378 0424 MegaPress 316 Check Valve



- 3 Remove burr from inside and outside of the pipe and prep to proper insertion depth using a preparation tool or fine-grit sandpaper.
- 4 Check seal and grip ring for correct fit. Do not use oils or lubricants.
- 5 Mark proper insertion depth as indicated by the Viega MegaPress Insertion Depth Chart. Improper insertion depth may result in improper seal. It is recommended that the depth marking be visible on the completed assembly. Make sure the flow direction indicator on the valve is facing the correct direction.

Warning!
 Keep extremities and foreign objects away from press tool during pressing operation to prevent injury or incomplete press.

- 8b Open the MegaPress jaw and place at right angles on the valve. Visually check insertion depth using mark on pipe.
- 8c Start pressing process and hold the trigger until the jaw has engaged the valve. Jaws will automatically release after a full press is made.
- 9a Viega MegaPress 1¼" to 2" connections must be performed with MegaPress rings and V2 actuator. See the tool's Operator's Manual for proper tool instructions.
- 9b Open the MegaPress ring and place at right angles on the valve. The MegaPress ring must be engaged on the valve bead. Check insertion depth.
- 9c Place V2 actuator onto the MegaPress ring and start the pressing process. Hold the trigger until the actuator has engaged the MegaPress ring.
- 10 Remove MegaPress jaw from valve or release V2 actuator from the MegaPress ring and then remove the MegaPress ring from the valve on completion of press. Repeat steps for the other end of the valve.

EN

Viega MegaPress 316 Check Valve

! Viega products are designed to be installed by licensed and trained plumbing and mechanical professionals who are familiar with Viega products and their installation. **Installation by non-professionals may void Viega LLC's warranty.**

DANGER!
 Read and understand all instructions for installing Viega MegaPress valves. Failure to follow all instructions may result in extensive property damage, serious injury, or death.

! Only valves marked with NSF-61 and NSF-372 are allowed for use in potable water systems.

Viega MegaPress Insertion Depth Chart (in)

Pipe Size	½	¾	1	1¼	1½	2
Insertion Depth	1⅛	1⅜	1⅝	1⅞	2	2

- 6 Refer to the chart below for minimum distance between fittings. To ensure a correct press, a minimum distance between press fittings must be maintained. Failure to provide this distance may result in an improper seal.

Pipe Diameter (in)	d (in)	d (mm)
½	¼	6
¾	¼	6
1	¼	6
1¼	½	13
1½	½	13
2	½	13

- 7 While turning slightly, slide valve onto the pipe to the marked depth. End of pipe must contact stop.
- 8a Viega MegaPress ½" to 1" valve connections must be performed using MegaPress jaws. See the press tool's Operator's Manual for proper tool instructions.