

Product Instructions

Viiega ProPress® Supply Stop Valve



Models 2942.3ZL and 2942.4ZL

viiega

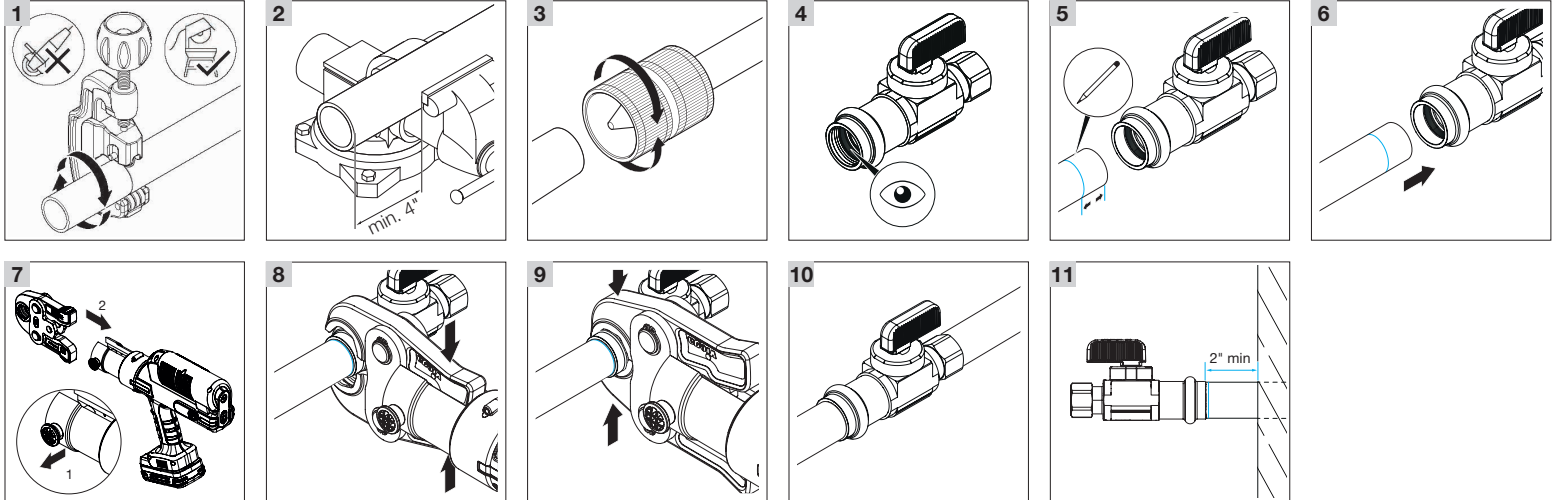
Viiega LLC
585 Interlocken Blvd.
Broomfield, CO 80021

Phone (800) 976-9819
www.viiega.us

EN Product Instructions Viiega ProPress Supply Stop Valve

This document is subject to updates. For the most current Viiega technical literature please visit www.viiega.us.

PI-PP 531247 0424 ProPress Supply Stop Valve (EN)



EN

Viiega ProPress Supply Stop Valve

! Viiega products are designed to be installed by licensed and trained plumbing and mechanical professionals who are familiar with Viiega products and their installation. **Installation by non-professionals may void Viiega LLC's warranty.**

! DANGER!
Read and understand all instructions for installing Viiega ProPress fittings. Failure to follow all instructions may result in extensive property damage, serious injury, or death.

! Only valves marked with NSF-61 and NSF-372 are allowed for use in potable water systems.

- 1 Cut copper tubing square using displacement-type cutter or fine-toothed saw.
- 2 Cut tubing a minimum of 4" away from the contact area of the vise to prevent possible damage to the tubing in the press area.
- 3 Remove burr from inside and outside of tubing to prevent cutting the sealing element. Prep to proper insertion depth using a preparation tool or fine grit sandpaper.
- 4 Check the sealing element for correct fit. Do not use oils or lubricants.

- 5 Mark proper insertion depth. The insertion depth for this valve is $\frac{3}{4}$ ". Improper insertion depth may result in improper seal.
- 6 While turning slightly, slide ball valve onto tubing to the marked depth. End of tubing must contact stop.

i Copper tubing must be free of surface imperfections, including metal stamped print lines, before a ProPress fitting is installed.

- 7 Insert appropriate Viiega ProPress jaw into the press tool and push in, holding pin until it locks in place.
- 8 Open the jaw and place at right angle on the valve. Visually check insertion depth using mark on tubing.

! WARNING!
Keep extremities and foreign objects away from press tool during pressing operation to prevent injury or incomplete press.

- 9 Hold trigger on press tool until press jaws have fully engaged the valve. Jaws will automatically release after a full press is made.
- 10 After pressing, open the jaw and remove the press tool.
- 11 The valve's minimum distance from the wall is 2".