

## Dimensional Document

# Viega ProPress®G Fittings

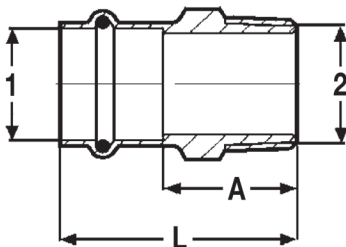


This document is subject to updates. For the most current Viega technical literature please visit [viega.us](http://viega.us).



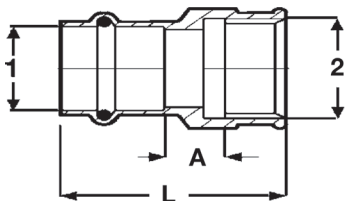
Viega products are designed to be installed by licensed and trained plumbing and mechanical professionals who are familiar with Viega products and their installation. **Installation by non-professionals may void Viega LLC's warranty.**

### ProPressG Adapter Bronze P x MPT - Model 0611

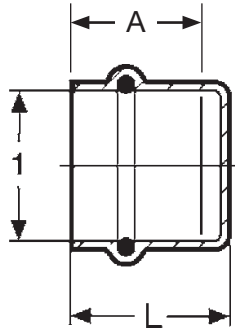


Part No.	Size (in)		A (in)	L (in)
	1	2		
16043	1/2	3/8	0.96	1.71
16048	1/2	1/2	1.12	1.87
16053	3/4	3/4	1.18	2.09
16058	1	1	1.46	2.36
16063	1 1/4	1 1/4	1.54	2.56
16068	1 1/2	1 1/2	1.54	2.95
16073	2	2	1.67	3.25

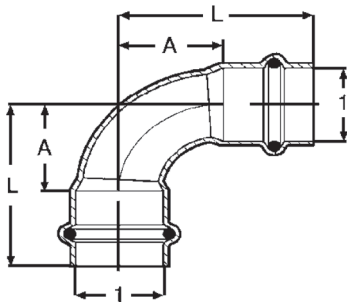
### ProPressG Adapter Bronze P x FPT - Model 0612



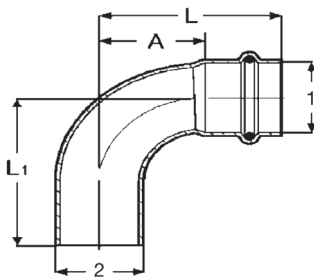
Part No.	Size (in)		A (in)	L (in)
	1	2		
23373	1/2	3/8	0.22	1.38
16078	1/2	1/2	0.29	1.57
16088	3/4	3/4	0.39	1.85
16093	1	1	0.48	2.05
23358	1 1/4	1 1/4	0.38	2.09
23363	1 1/2	1 1/2	0.39	2.48
23368	2	2	0.44	2.72

**ProPressG Cap Copper P - Model 0656**


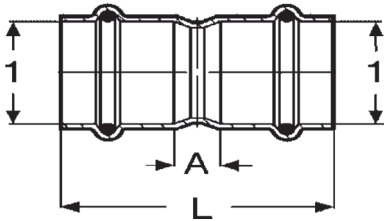
Part No.	Size (in)	A (in)	L (in)
	<b>1</b>		
16313	1/2	0.81	0.94
16318	3/4	0.98	1.10
16323	1	0.98	1.10
16328	1 1/4	1.14	1.26
16333	1 1/2	1.52	1.65
16338	2	1.69	1.81

**ProPressG 90° Elbow Copper P x P - Model 0616**


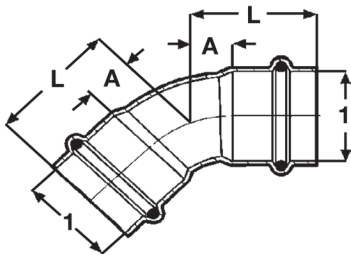
Part No.	Size (in)	A (in)	L (in)
	<b>1 1</b>		
16128	1/2 x 1/2	0.75	1.50
16133	3/4 x 3/4	1.04	1.94
16733	3/4 x 3/4	0.76	1.67
16138	1 x 1	1.32	2.23
13738	1 x 1	1.28	2.19
16143	1 1/4 x 1 1/4	1.65	2.68
16743	1 1/4 x 1 1/4	1.28	2.31
16148	1 1/2 x 1 1/2	1.98	3.40
16748	1 1/2 x 1 1/2	1.29	2.72
16153	2 x 2	2.55	4.13
16753	2 x 2	2.16	3.74

**ProPressG 90° Street Elbow Copper FTG x P - Model 0616.1**


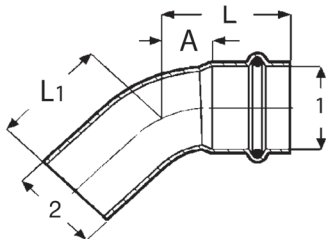
Part No.	Size (in)	A (in)	L (in)	L1 (in)
	<b>1 2</b>			
16158	1/2 x 1/2	0.75	1.50	1.54
16163	3/4 x 3/4	1.04	1.94	1.98
16763	3/4 x 3/4	0.76	1.67	1.83
16168	1 x 1	1.32	2.23	2.27
16768	1 x 1	1.28	2.19	2.27
16173	1 1/4 x 1 1/4	1.65	2.68	2.76
16178	1 1/2 x 1 1/2	1.98	3.40	3.48
16183	2 x 2	2.55	4.13	4.20

**ProPressG Coupling with Stop Copper P x P - Model 0615**


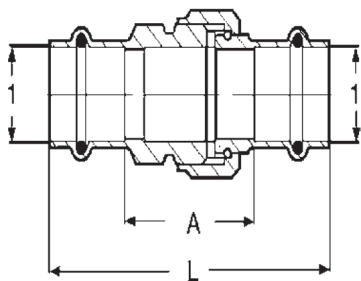
Part No.	Size (in)	A (in)	L (in)
	<b>1 1</b>		
16098	½ x ½	0.12	1.61
16103	¾ x ¾	0.20	2.01
16108	1 x 1	0.16	1.97
16113	1¼ x 1¼	0.14	2.20
16118	1½ x 1½	0.14	2.99
16123	2 x 2	0.14	3.31

**ProPressG 45° Elbow Copper P x P - Model 0626**


Part No.	Size (in)	A (in)	L (in)
	<b>1 1</b>		
16188	½ x ½	0.30	1.04
16193	¾ x ¾	0.43	1.34
16793	¾ x ¾	0.36	1.26
16198	1 x 1	0.55	1.46
16798	1 x 1	0.47	1.38
16203	1¼ x 1¼	0.69	1.71
16208	1½ x 1½	0.83	2.24
16213	2 x 2	1.05	2.63

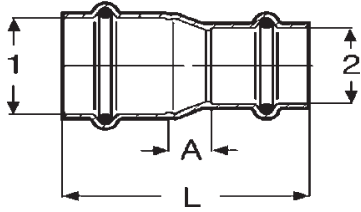
**ProPressG 45° Street Elbow Copper FTG x P - Model 0626.1**


Part No.	Size (in)	A (in)	L (in)	L1 (in)
	<b>1 2</b>			
16218	½ x ½	0.31	1.06	1.10
16223	¾ x ¾	0.43	1.34	1.38
16723	¾ x ¾	0.36	1.26	1.30
16228	1 x 1	0.55	1.46	1.50
16233	1¼ x 1¼	0.69	1.71	1.79
16238	1½ x 1½	0.83	2.24	2.32
16243	2 x 2	1.06	2.64	2.72

**ProPressG Union Bronze P x P - Model 0650**


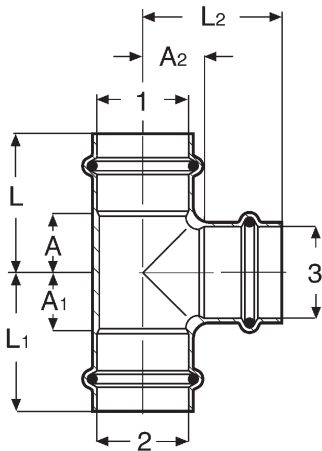
Part No.	Size (in)	A (in)	L (in)
	<b>1 1</b>		
17598	½ x ½	1.26	2.76
17603	¾ x ¾	1.34	3.15
17608	1 x 1	1.83	3.64
17613	1¼ x 1¼	1.63	3.68
17618	1½ x 1½	2.13	4.96
17623	2 x 2	2.07	5.22

**ProPressG Reducer Copper P x P - Model 0615.2**



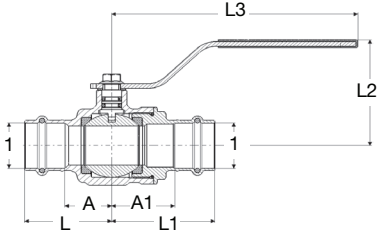
Part No.	Size (in)		A (in)	L (in)
	1	2		
23273	3/4	1/2	0.42	2.07
23278	1	1/2	0.74	2.36
23283	1	3/4	0.50	2.29
23293	1 1/4	3/4	0.73	2.64
23288	1 1/4	1	0.57	2.48
23303	1 1/2	1	0.77	3.07
23298	1 1/2	1 1/4	0.53	2.96
23308	2	1	1.32	3.78
23313	2	1 1/2	0.77	3.75

**ProPressG Tee Copper P x P x P - Model 0618**



Part No.	Size (in)			A (in)	A1 (in)	A2 (in)	L (in)	L1 (in)	L2 (in)
	1	2	3						
16248	1/2	1/2	1/2	0.74	0.74	0.50	1.50	1.50	1.24
16253	3/4	3/4	3/4	0.84	0.84	0.59	1.75	1.75	1.50
16258	3/4	3/4	1/2	0.69	0.69	0.63	1.59	1.59	1.38
16263	1	1	1	0.71	0.71	0.79	1.87	1.87	1.69
23333	1	3/4	1/2	0.69	0.89	0.79	1.59	1.79	1.54
17688	1	1	1/2	0.69	0.69	0.79	1.59	1.59	1.54
16268	1	3/4	3/4	0.84	1.04	0.75	1.75	1.95	1.65
16273	1	1	3/4	0.84	0.84	0.75	1.75	1.75	1.65
16278	1 1/4	1 1/4	1 1/4	1.02	1.02	0.87	2.05	2.05	1.89
16283	1 1/4	1 1/4	1	0.89	0.89	0.91	1.91	1.91	1.81
16288	1 1/2	1 1/2	1 1/2	1.14	1.14	1.14	2.56	2.56	2.56
23348	1/2	1 1/2	3/4	0.67	0.67	1.14	2.09	2.09	2.05
16293	1 1/2	1 1/2	1	0.75	0.75	1.18	2.17	2.17	2.09
16298	1 1/2	1 1/2	1 1/4	0.87	0.87	1.14	2.28	2.28	2.17
16303	2	2	2	1.38	1.38	1.38	2.95	2.95	2.95
23353	2	2	3/4	0.80	0.80	1.26	2.37	2.37	2.17
16308	2	2	1 1/2	1.14	1.14	1.38	2.72	2.72	2.80

**ProPressG Gas Ball Valve Bronze P x P - Model 0670**



Part No.	Size (in)	A (in)	A1 (in)	L (in)	L1 (in)	L2 (in)	L3 (in)
	<b>1 1</b>						
19648	1/2" x 1/2"	0.83	1.02	1.57	1.77	1.34	4.76
19653	3/4" x 3/4"	0.87	1.14	1.77	2.05	1.42	4.76
19658	1" x 1"	1.06	1.42	1.96	2.32	1.56	4.76
19663	1 1/4" x 1 1/4"	0.94	1.50	1.96	2.53	1.91	6.10
19668	1 1/2" x 1 1/2"	1.28	1.43	2.69	2.84	2.20	6.10
19673	2" x 2"	1.56	1.75	3.13	3.32	2.45	6.10

**V Viega LLC**  
 585 Interlocken Blvd.  
 Broomfield, CO 80021

Phone (800) 976-9819  
[www.viega.us](http://www.viega.us)

