

Submittal Package

viega



ProPress®G System

- Natural Gas
- LP Gas
- Mixed Fuel Gases
- Butane
- Manufactured Fuel Gases
- Oxygen (O2)
- Carbon Dioxide (CO2) Dry
- Vacuum
- _____

System Data Sheet	2
Engineering Specifications	3
Dimensional Documentation	6
Product Instructions	10
Viega Limited Warranty ProPress® Fittings and Valves	11

Submittal Package

viEGA

System Data Sheet

System Description

The ProPressG system is a copper press connection system designed to meet the demands of natural gas and propane gas in the vapor state as well as fuel oil systems. Press fittings are manufactured in copper, and fittings with NPT connections are manufactured in bronze. ProPressG utilizes an HNBR sealing element to provide permanent leak-proof connections in dimensions from ½" to 2".

ProPressG is approved for the use with hard copper tubing from ½" to 2" and soft copper tubing in ½" to 1¼" diameters. All tubing must comply with ASTM B88 standards. ProPressG fittings are also approved for installations in above and below ground applications.

Listings & Certificates

- CSA International
- ICC-ES PMG 1036
- IAPMO/UPC LC-4

International Listings and Certificates

- Lloyd's Register (LR)
- Det Norske Veritas (DNV)
- Registro Italiano Navale (RINA)
- Bureau Veritas (BV)
- KIWA

Compliant with:

- IFGC International Fuel Gas Code
- NFPA 54/Z223.1 National Fuel Gas Code
- NFPA 58 Liquefied Petroleum Gas Code
- UPC Chapter 12 Fuel Piping
- NFPA 30 Flammable and Combustible Liquids code
- NFPA 30A Code for Motor Fuel Dispensing Facilities and Repair Garages
- NFPA 31 Standard for the Installation of Oil-Burning Equipment (supply line only)

ViEGA ProPressG fittings are offered in configurations including: Elbows, Couplings, Reducers, Tees, Reducing Tees, Threaded Adapters, Unions and Caps.

Operating Parameters

Operating Pressure: 125 PSI maximum

Test Pressure: 600 PSI maximum

Operating Temperature: -40°F to 180°F



Approved Applications

- Natural Gas
- Propane Gas
- Mixed Fuel Gases (vapor state only)
- Manufactured Fuel Gases
- Butane
- Fuel Oil
- Carbon Dioxide CO₂
- Vacuum 29.2" Mercury
- Diesel Fuel
- Motor Oil

Note: Systems must be installed per local code requirements. See approved applications bulletin for allowable temperature and pressure ranges.

In ProPressG ½" to 2" dimensions, Smart Connect technology assures leakage of liquids and/or gases from inside the system past the sealing element of an unpressed connection. The function of this feature is to provide the installer quick and easy identification of connections which have not been pressed prior to putting the system into operation.

Recommended Tools:

- RIDGID RP 200-B (½" to 1¼")
- RIDGID RP 210-B (½" to 1¼")
- RIDGID RP 330-B or 330-C
- RIDGID RP 340

Submittal Package

viega

Engineering Specifications

PART 1 GENERAL

1.1 SUMMARY

- A. Copper Tubing and ProPress G® Fittings for Fuel Gas Piping Systems

1.2 REFERENCES

- A. ASME A13.1 Scheme for the Identification of Piping Systems
- B. ASME B1.20.1 Pipe Threads, General Purpose (Inch)
- C. ASME B16.18 Cast Copper Alloy Solder Joint Pressure Fittings
- D. ASME B16.22 Wrought Copper and Copper Alloy Solder Joint Pressure Fittings
- E. ANSI LC-4/CSA 6.32 Press Connect Metallic Fittings for use in Fuel Gas Distribution Systems
- F. ASTM B88 Standard Specification for Seamless Copper Water Tube
- G. ASTM B280 Standard Specification for Seamless Copper Tube for Air Conditioning and Refrigeration Field Service
- H. IAPMO Uniform Plumbing Code
- I. ICC International Fuel Gas Code
- J. MSS-SP-58 Pipe Hangers and Supports - Materials, Design and Manufacture
- L. NFPA 54 National Fuel Gas Code

1.3 QUALITY ASSURANCE

- A. The installer shall be a qualified installer, licensed within the jurisdiction, and familiar with the installation of copper tubing.
- B. The installation of copper tubing for fuel gas piping systems shall conform to the requirements of the ICC International Fuel Gas Code, IAPMO Uniform Plumbing Code, or NFPA54, the National Fuel Gas Code.

1.4 DELIVERY, STORAGE, AND HANDLING

- A. Copper tubing shall be shipped to the job site on truck or in such a manner to protect the tubing. The tubing and fittings shall not be roughly handled during shipment. The tubing and fittings shall be unloaded with reasonable care.
- B. Protect the stored tubing from moisture and dirt. Elevate above grade. When stored inside, do not exceed the structural capacity of the floor.
- C. Protect fittings and piping specialties from moisture and dirt.

1.5 PROJECT CONDITIONS

- A. Verify length of tubing required by field measurements.

Submittal Package

viega

1.6 WARRANTY

- A. The tubing and fittings manufacturer shall warrant that the tubing and fittings are free from defects and conform to the designated standard. The warranty shall only be applicable to tubing and fittings installed in accordance with the manufacturer's installation instructions.
- B. The manufacturer of the tubing and fittings shall not be responsible for the improper use, handling, or installation of the product.

PART 2 – PRODUCTS

2.1 MANUFACTURERS

- A. Copper Press
Gas Fittings:
ProPress G Fittings
Viega LLC, 585 Interlocken Blvd., Broomfield CO, 80021
Telephone: (800) 976-9819, Website: www.viega.us

2.2 MATERIAL

- A. Tubing Standard: Copper tubing shall be either Type K or L conform to ASTM B88 or ASTM B280.
- B. Press Fitting: Copper and copper alloy press fittings shall conform to material requirements of ASME B16.18 or ASME B16.22 and performance criteria of ANSI LC4/CSA 6.32. Sealing elements for press fittings shall be HNBR. Sealing elements shall be factory installed or an alternative supplied by fitting manufacturer. Press end shall have Smart Connect® technology design (leakage path). In ProPressG ½" to 2" dimensions Smart Connect technology assures leakage of liquids and/or gases from inside the system past the sealing element of a unpressed connection. The function of this feature is to provide the installer quick and easy identification of connections which have not been pressed prior to putting the system into operation.
- C. Threaded Fittings: Pipe Threads shall conform to ASME B1.20.1.
- D. Hanger Standard: Hangers and supports shall conform to MSS-SP-58.

2.3 SOURCE QUALITY CONTROL

- A. Copper gas fittings shall be listed by a third party agency as being acceptable for fuel gas piping systems.

Submittal Package

viega

PART 3 – EXECUTION

3.1 EXAMINATION

- A. The installing contractor shall examine the copper tubing and fittings for defects, sand holes, or cracks. There shall be no defects of the tubing or fittings. Any damaged tubing or fittings shall be rejected.

3.2 PREPARATION

- A. Copper tubing shall be cut with a wheeled tubing cutter or approved copper tubing cutting tool. The tubing shall be cut square to permit proper joining with the fittings.
- B. Remove scale, slag, dirt, and debris from inside and outside of tubing and fittings before assembly. The tubing end shall be wiped clean and dry. The burrs on the tubing shall be reamed with a deburring or reaming tool.

3.3 INSTALLATION GENERAL LOCATION

- A. Plans indicate general location and arrangement of piping systems. Identified locations and arrangements are used to size tubing and other design considerations. Install piping as indicated, except where deviations to layout are approved on coordination drawings.

3.4 INSTALLATION, COPPER TUBING

- A. Pressure Rating: Install components having a pressure rating equal to or greater than the system operating pressure.
- B. Install piping free of sags, bends, and kinks.
- C. Change in Direction: Install fittings for changes in direction and branch connections. Changes in direction may also be made by bending of Types K and L soft copper tubing.
- D. Press Connections: ProPress G fittings shall be made in accordance with the manufacturer's installation instructions. The tubing shall be fully inserted into the fitting and the tubing marked at the shoulder of the fitting. The fitting alignment shall be checked against the mark on the tubing to assure the tubing is fully engaged (inserted) in the fitting. The joints shall be pressed using the tool approved by the manufacturer.
- E. Threaded Joints: Threaded joints shall have pipe joint compound or teflon tape applied to the male threads only. Tighten joint with a wrench and backup wrench as required.
- F. Flared Joints: Flared copper tube joints shall be made by the appropriate use of cast copper alloy fittings. Flared ends of copper tube shall be of the 45-degree flare type and shall only be made with a flaring tool designed specifically for that purpose.

Submittal Package

viega



- G. Pipe Protection: Provide protection against abrasion where copper tubing is in contact with other building members by wrapping with an approved tape, pipe insulation or otherwise suitable method of isolation.
- H. Penetration Protection: When located within 1 inch of the finished wall or ceiling, provide safety plates a minimum of 18 gauge extending 1 inch beyond the tubing penetration. Provide allowance for thermal expansion and contraction of copper tubing passing through a wall, floor, ceiling or partition by wrapping with an approved tape or pipe insulation, or by installing through an appropriately sized sleeve. Penetrations of fire resistance rated assemblies shall maintain the rating of the assembly.
- I. Backfill Material: Backfill material shall not include any ashes, cinders, refuse, stones, boulders or other materials which can damage or break the tubing or promote corrosive action in any trench or excavation in which tubing is installed.
- J. Horizontal Support: Install hangers for horizontal piping in accordance with MSS-SP-58 or the following maximum spacing and minimum rod sizes:

Nominal Tube Size (inches)	Copper Tube Max. Span (feet)	Minimum Rod Diameter (inches)
Up to ¾	5	¾
1	6	¾
1¼	7	¾
1½	8	¾
2	8	¾

- K. Vertical Support: Vertical copper tubing shall be supported at each floor.
- L. Galvanic Corrosion: Hangers and supports shall be either copper or vinyl coated to prevent galvanic corrosion between the tubing and the supporting member.

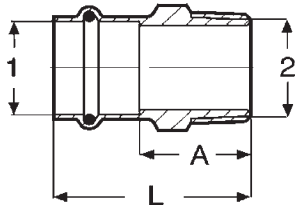
3.6 PURGING

- A. Purging: Air shall be purged from the gas piping. The air shall be displaced with the fuel gas.

Submittal Package

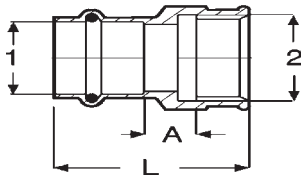
viega

Dimensional Documentation



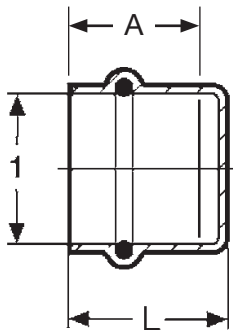
ProPressG Adapter Bronze P x MPT - Model 0611

Part Number	Size	A (in)	L (in)
	1 2		
16043	1/2" x 3/8" MPT	0.96	1.71
16048	1/2" x 1/2" MPT	1.12	1.87
16053	3/4" x 3/4" MPT	1.18	2.09
16058	1" x 1" MPT	1.46	2.36
16063	1 1/4" x 1 1/4" MPT	1.54	2.56
16068	1 1/2" x 1 1/2" MPT	1.54	2.95
16073	2" x 2" MPT	1.67	3.25



ProPressG Adapter Bronze P x FPT - Model 0612

Part Number	Size	A (in)	L (in)
	1 2		
23373	1/2" x 3/8" FPT	0.22	1.38
16078	1/2" x 1/2" FPT	0.29	1.57
16088	3/4" x 3/4" FPT	0.39	1.85
16093	1" x 1" FPT	0.48	2.05
23358	1 1/4" x 1 1/4" FPT	0.38	2.09
23363	1 1/2" x 1 1/2" FPT	0.39	2.48
23368	2" x 2" FPT	0.44	2.72

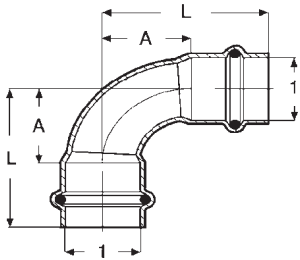


ProPressG Cap Copper P - Model 0656

Part Number	Size	A (in)	L (in)
	1		
16313	1/2"	0.81	0.94
16318	3/4"	0.98	1.10
16323	1"	0.98	1.10
16328	1 1/4"	1.14	1.26
16333	1 1/2"	1.52	1.65
16338	2"	1.69	1.81

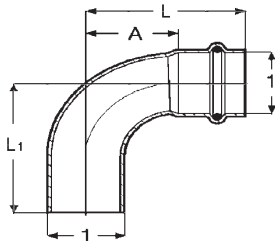
Submittal Package

viega



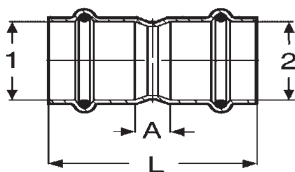
ProPressG 90° Elbow Copper P x P - Model 0616

Part Number	Size	A (in)	L (in)
	1 1		
16128	1/2" x 1/2"	0.75	1.50
16133	3/4" x 3/4"	1.04	1.94
16733	3/4" x 3/4"	0.76	1.67
16138	1" x 1"	1.32	2.23
16738	1" x 1"	1.28	2.19
16143	1 1/4" x 1 1/4"	1.65	2.68
16743	1 1/4" x 1 1/4"	1.28	2.31
16148	1 1/2" x 1 1/2"	1.98	3.40
16748	1 1/2" x 1 1/2"	1.29	2.72
16153	2" x 2"	2.55	4.13
16753	2" x 2"	2.16	3.74



ProPressG 90° Street Elbow Copper FTG x P - Model 0616.1

Part Number	Size	A (in)	L (in)	L1 (in)
	1 2			
16158	1/2" x 1/2"	0.75	1.50	1.54
16163	3/4" x 3/4"	1.04	1.94	1.98
16763	3/4" x 3/4"	0.76	1.67	1.83
16168	1" x 1"	1.32	2.23	2.27
16768	1" x 1"	1.28	2.19	2.27
16173	1 1/4" x 1 1/4"	1.65	2.68	2.76
16178	1 1/2" x 1 1/2"	1.98	3.40	3.48
16183	2" x 2"	2.55	4.13	4.20



ProPressG Coupling with Stop Copper P x P - Model 0615

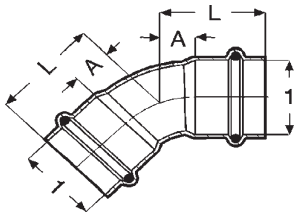
Part Number	Size	A (in)	L (in)
	1 1		
16098	1/2" x 1/2"	0.12	1.61
16103	3/4" x 3/4"	0.20	2.01
16108	1" x 1"	0.16	1.97
16113	1 1/4" x 1 1/4"	0.14	2.20
16118	1 1/2" x 1 1/2"	0.14	2.99
16123	2" x 2"	0.14	3.31

Submittal Package

viega

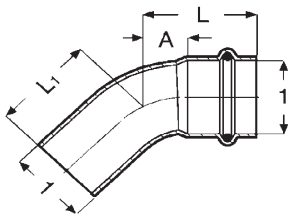


ProPressG 45° Elbow Copper P x P - Model 0626



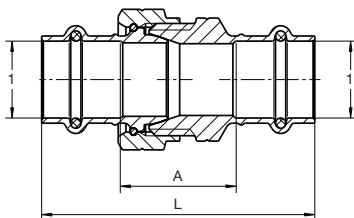
Part Number	Size	A (in)	L (in)
	1 1		
16188	1/2" x 1/2"	0.30	1.04
16193	3/4" x 3/4"	0.43	1.34
16793	3/4" x 3/4"	0.36	1.26
16198	1" x 1"	0.55	1.46
16798	1" x 1"	0.47	1.38
16203	1 1/4" x 1 1/4"	0.69	1.71
16803	1 1/4" x 1 1/2"	1.28	1.31
16208	1 1/2" x 1 1/2"	0.83	2.24
16808	1 1/2" x 1 1/2"	1.29	2.72
16213	2" x 2"	1.05	2.63
16813	2" x 2"	2.16	3.74

ProPressG 45° Street Elbow Copper FTG x P - Model 0626.1



Part Number	Size	A (in)	L (in)	L1 (in)
	1 2			
16218	1/2" x 1/2"	0.31	1.06	1.10
16223	3/4" x 3/4"	0.43	1.34	1.38
16723	3/4" x 3/4"	0.36	1.26	1.30
16228	1" x 1"	0.55	1.46	1.50
16798	1" x 1"	0.47	1.38	1.49
16233	1 1/4" x 1 1/4"	0.69	1.71	1.79
16238	1 1/2" x 1 1/2"	0.83	2.24	2.32
16243	2" x 2"	1.06	2.64	2.72

ProPressG Union Bronze P x P - Model 0650



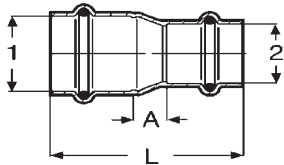
Part Number	Size	A (in)	L (in)
	1 1		
17598	1/2" x 1/2"	1.26	2.76
17603	3/4" x 3/4"	1.34	3.15
17608	1" x 1"	1.83	3.64
17613	1 1/4" x 1 1/4"	1.63	3.68
17618	1 1/2" x 1 1/2"	2.13	4.96
17623	2" x 2"	2.07	5.22

Submittal Package

viega

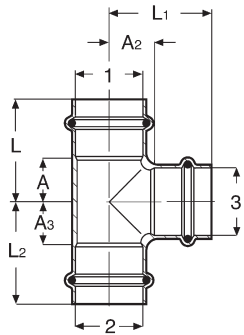


ProPressG Reducer Copper P x P - Model 0615.2



Part Number	Size		A (in)	L (in)
	1	2		
23273	3/4"	1/2"	0.42	2.07
23278	1"	1/2"	0.74	2.36
23283	1"	3/4"	0.50	2.29
23293	1 1/4"	3/4"	0.73	2.64
23288	1 1/4"	1"	0.57	2.48
23303	1 1/2"	1"	0.77	3.07
23298	1 1/2"	1 1/4"	0.53	2.96
23308	2"	1"	1.32	3.78
23313	2"	1 1/2"	0.77	3.75

ProPressG Tee Copper P x P x P - Model 0618



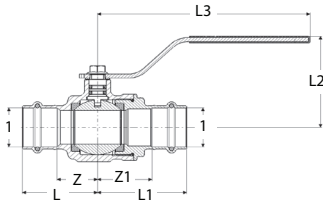
Part Number	Size			A (in)	A1 (in)	A2 (in)	L (in)	L1 (in)	L2 (in)
	1	2	3						
16248	1/2"	1/2"	1/2"	0.74	0.74	0.50	1.50	1.50	1.24
16253	3/4"	3/4"	3/4"	0.84	0.84	0.59	1.75	1.75	1.50
16258	3/4"	3/4"	1/2"	0.69	0.69	0.63	1.59	1.59	1.38
16263	1"	1"	1"	0.71	0.71	0.79	1.87	1.87	1.69
23333	1"	3/4"	1/2"	0.69	0.89	0.79	1.59	1.79	1.54
17688	1"	1"	1/2"	0.69	0.69	0.79	1.59	1.59	1.54
16268	1"	3/4"	3/4"	0.84	1.04	0.75	1.75	1.95	1.65
16273	1"	1"	3/4"	0.84	0.84	0.75	1.75	1.75	1.65
16278	1 1/4"	1 1/4"	1 1/4"	1.02	1.02	0.87	2.05	2.05	1.89
16283	1 1/4"	1 1/4"	1"	0.89	0.89	0.91	1.91	1.91	1.81
16288	1 1/2"	1 1/2"	1 1/2"	1.14	1.14	1.14	2.56	2.56	2.56
23348	1/2"	1 1/2"	3/4"	0.67	0.67	1.14	2.09	2.09	2.05
16293	1 1/2"	1 1/2"	1"	0.75	0.75	1.18	2.17	2.17	2.09
16298	1 1/2"	1 1/2"	1 1/4"	0.87	0.87	1.14	2.28	2.28	2.17
16303	2"	2"	2"	1.38	1.38	1.38	2.95	2.95	2.95
23353	2"	2"	3/4"	0.80	0.80	1.26	2.37	2.37	2.17
16308	2"	2"	1 1/2"	1.14	1.14	1.38	2.72	2.72	2.80

Submittal Package

viega



ProPressG Gas Ball Valve Bronze P x P - Model 0670



Part Number	Size	A (in)	A1 (in)	L (in)	L1 (in)	L2 (in)	L3 (in)
	1 1						
19648	1/2" x 1/2"	0.83	1.02	1.57	1.77	1.34	4.76
19653	3/4" x 3/4"	0.87	1.14	1.77	2.05	1.42	4.76
19658	1" x 1"	1.06	1.42	1.96	2.32	1.56	4.76
19663	1 1/4" x 1 1/4"	0.94	1.50	1.96	2.53	1.91	6.10
19668	1 1/2" x 1 1/2"	1.28	1.43	2.69	2.84	2.20	6.10
19673	2" x 2"	1.56	1.75	3.13	3.32	2.45	6.10

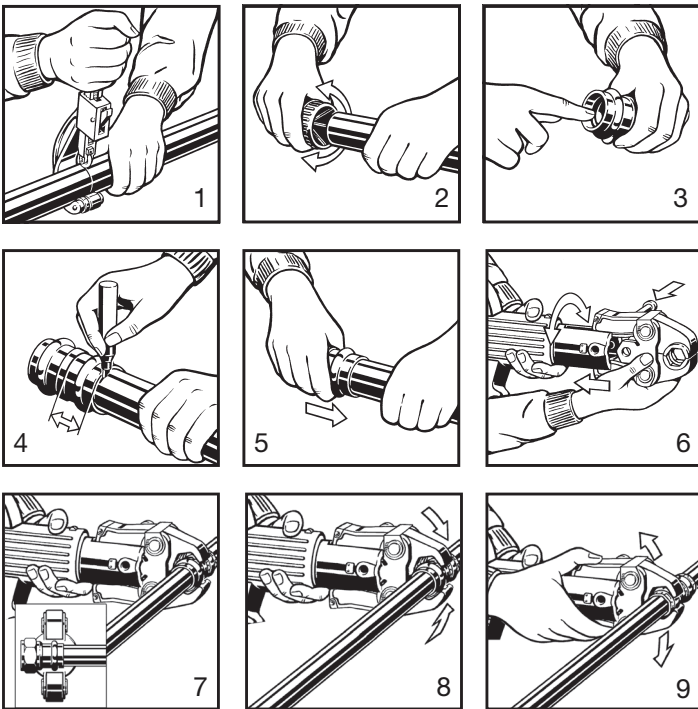
Submittal Package

viega

Product Instructions

Viega ProPress®G

For Types K, L, and M Hard Copper Tubing in ½" to 2" and Soft Copper Tubing in ½" to 1¼"



⚠ WARNING Read and understand all instructions for installing Viega ProPressG fittings for fuel gas. Failure to follow all instructions may result in significant property damage, serious injury or death.

1. Cut copper tubing at right angles using displacement-type cutter or fine-toothed steel saw.
2. Remove burr from inside and outside of tubing to prevent cutting sealing element.
3. Check seal for correct fit. Do not use oils or lubricants. Use only Viega ProPress Yellow HNBR sealing elements.
4. Mark proper insertion depth as indicated by the Viega ProPress Insertion Depth Chart. Improper insertion depth may result in improper seal.
5. While turning slightly, slide press fitting onto tubing to the marked depth.
Note: End of tubing must contact stop.
6. Insert appropriate Viega jaw into the pressing tool and push in, holding pin until it locks in place.
7. Open the jaw and place at right angles on the fitting. Visually check insertion depth using mark on tubing.
8. Start pressing process and hold the trigger until the jaw has engaged the fitting.
9. After pressing, the jaw can be opened again.

⚠ WARNING The following standards, codes and instructions should be followed when installing Viega ProPressG fittings for Fuel Gas.

- The installation shall be made in accordance with local codes, or, in the absence of local codes, in accordance with the National Fuel Gas Code NFPA 54 or the LP-Gas Code NFPA 58, as applicable.
- For use with type K or L copper tubing, drawn copper from ½" to 2", and annealed copper from ½" to 1¼". All copper must be in compliance with ASTM B-88.
- The fittings are for use with fuel gases only and are intended for operating pressure specified (maximum 125 psi).
- Undue stress or strain on the fittings and the tubing is to be avoided.
- Concealed tubing and fittings shall be protected from puncture threats.
- If the installation requires components in addition to those supplied by the fitting manufacturer, those components shall be specified. The instructions shall state that only the components provided or specified by the manufacturer are to be used in the installation.
- The fitting/tubing system shall not be used as a grounding electrode for an electrical system.
- The inspection, testing and purging of the installation shall be performed using procedures specified in Part 4 of the National Fuel Gas Code NFPA 54, ANSI Z223 or the LP-Gas Code NFPA 58 section 3.2-10 as applicable, or in accordance with the requirements of the applicable local codes.
- For use with natural, propane, mixed and manufactured gases in the vapor state, not in the liquid state.
- The fitting/tubing system shall not be used as a means of support.

Viega ProPress Insertion Depth Chart

Tube Size	½"	¾"	1"	1¼"	1½"	2"
Insertion Depth	¾"	7/8"	7/8"	1"	17/16"	19/16"



Leak Testing with Smart Connect®: Unpressed connections are located by pressurizing the system with air or water. Leak testing with air can be dangerous at high pressures. When testing with compressed air the proper pressure range is ½ psi to 45 psi maximum. Following a successful leak test, the system may be pressure tested up to 200

psi if required by local code requirements or project specifications.

Viega products are designed to be installed by licensed and trained plumbing and mechanical professionals who are familiar with Viega products and their installation. **Installation by non-professionals may void Viega LLC's warranty.**

Submittal Package

viega

Viega Limited Warranty ProPress® Fittings and Valves

Subject to the conditions and limitations in this Limited Warranty, Viega LLC (VIEGA) warrants to wholesalers and licensed plumbing and mechanical contractors in the United States and Canada that its PROPRESS fittings, when properly installed in non industrial and non marine applications and under normal conditions of use, will be free of failure from manufacturing defect for a period of fifty (50) years from date of installation and that its PROPRESS valves, when properly installed in non industrial and non marine applications and under normal conditions of use, will be free of failure from manufacturing defect for a period of two (2) years from date of installation.

Under this Limited Warranty, you only have a right to a remedy if the failure or leak resulted from a manufacturing defect in the products covered by this warranty and the failure or leak occurred during the warranty period. You do not have a remedy under this warranty and the warranty does not apply if the failure or any resulting damage is caused by (1) components other than those manufactured or sold by Viega; (2) not designing, installing, inspecting, or testing the ProPress fittings or valves in accordance with Viega's installation instructions in effect at the time of the installation; applicable code requirements; and accepted industry practice; (3) improper handling and protection of the product prior to and during installation, inadequate freeze protection, exposure to water pressures or temperatures or in applications outside acceptable operating conditions; (4) acts of nature such as, but not limited to, earthquakes, fire, flood, or lightning, or (5) external environmental causes, such as water quality variations, aggressive water, or other external chemical or physical conditions.

In the event of a leak or other failure of the parts covered by this warranty, it is the responsibility of the property owner to obtain and pay for repairs. Only if the warranty applies will Viega be responsible for the remedy under this

warranty. The part or parts which you claim failed should be kept and Viega contacted by writing to the address below or telephoning 1-800-976-9819 within thirty (30) days after the leak or other failure and identifying yourself as having a warranty claim. You should be prepared to ship, at your expense, the product which you claim failed due to a manufacturing defect and document the date of installation. Within a reasonable time after receiving the product, Viega will investigate the reasons for the failure, which includes the right to inspect the product at Viega. Viega will notify you in writing of the results of its review.

In the event that Viega determines that the failure or leak was the result of a manufacturing defect in the part covered by this warranty and that this warranty applies, the EXCLUSIVE AND ONLY REMEDY under this warranty shall be the reimbursement for repair and/or replacement of the part. VIEGA SHALL NOT BE LIABLE FOR ANY CONSEQUENTIAL OR OTHER DAMAGE (FOR EXAMPLE, WATER OR PROPERTY OR MOLD REMEDIATION) UNDER ANY LEGAL THEORY AND WHETHER ASSERTED BY DIRECT ACTION, FOR CONTRIBUTION OR INDEMNITY OR OTHERWISE.

THE ABOVE WARRANTY IS IN LIEU OF ALL OTHER WARRANTIES, EXPRESS OR IMPLIED, INCLUDING BUT NOT LIMITED TO THE IMPLIED WARRANTIES OF MERCHANTABILITY AND FITNESS FOR A PARTICULAR PURPOSE. If a limited warranty shall be found to apply, such warranty is limited to four years. Other than this Limited Warranty, Viega does not authorize any person or firm to create for it any other obligation or liability in connection with its products.

This Limited Warranty gives you specific legal rights and you also may have other rights which may vary from state to state. This warranty shall be interpreted and applied under the law of the state in which the product is installed and is intended as a Commercial Warranty.

Viega products are designed to be installed by licensed and trained plumbing and mechanical professionals who are familiar with Viega products and their installation. *Installation by non-professionals may void Viega LLC's warranty.*

This document is subject to updates. For the most current Viega technical literature please visit www.viega.us.

Viega LLC • 585 Interlocken Blvd. • Broomfield, CO 80021 • Phone (800) 976-9819 • www.viega.us