

# Viega ManaBloc®

A completely customizable  
water and energy-saving system



Connected in quality.

**Viega ManaBloc: A Superior Choice**

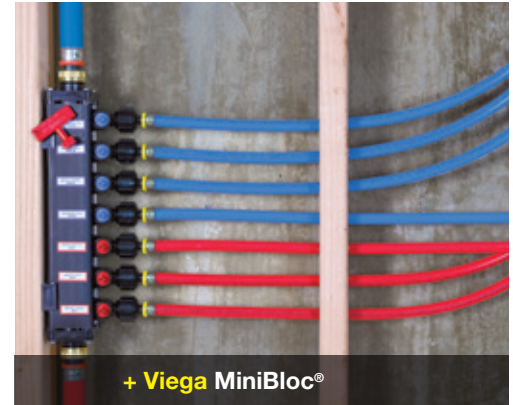
- With the industry's largest internal reservoir (1¼"), there are less dramatic temperature and pressure changes compared to manifold and branch and tee installations
- 10-year transferable warranty
- Entire water distribution system controlled from one location like an electric breaker box
- Designed to resist scaling and corrosion
- 100% factory tested
- Fewer behind-the-wall fittings
- Available for PureFlow Press or PureFlow Crimp installations

**Features and benefits:**

- Flexible PureFlow PEX tubing makes installations fast and easy
- ¾" or ½" PEX lines available to supply required fixture demands, ensuring optimal efficiency
- Quiet operation with minimized flow noise compared to copper tubing
- Complies with most green efficiency code supplements
- Faster hot water delivery is possible through dedicated lines to each plumbing fixture

Connection	Polymer	Alloy	Polybutylene <sup>1</sup>
Press	O <sup>2</sup> S	O S	
Crimp	O <sup>2</sup> S	S	O <sup>2</sup>
Compression		S	
MPT		S	S

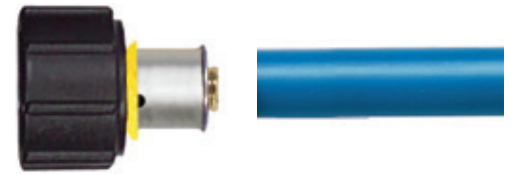
O = Available connection for outlet ports  
 S = Available connection for supply ports  
<sup>1</sup> For retrofit applications only  
<sup>2</sup> Includes sweep configuration (angled at 12 degrees)



Also available in MiniBloc configurations.

**ManaBloc Port Connections**

PureFlow Press Polymer and Bronze



PureFlow Crimp PolyAlloy



**DID YOU KNOW?**

The amount of time and water saved with the Viega ManaBloc, over a traditional PEX branch and tee setup, is remarkable. In one year, ManaBloc will [save you enough water for 55 showers](#). Multiply the time you waste everyday waiting for hot water and, over a lifetime, you'll [save 21 days!](#)

**i Why ¾" Tubing?**

**The benefits of less water volume in the system:**

- Less water wasted down the drain
- Faster hot water delivery
- Ideal for use with low demand fixtures

Volume stored in 50 ft of PEX tubing:

1/2" VS. 3/8"



**ManaBloc Supply Connections**



PureFlow Press Polymer and Bronze



PureFlow Crimp PolyAlloy and Brass