

Product Instructions

Viega ProPress® Lockable Stem Extension



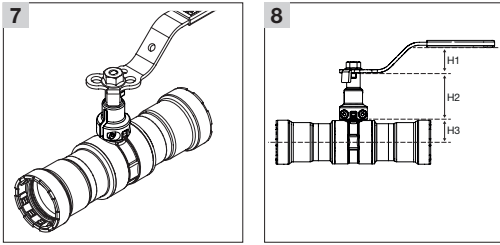
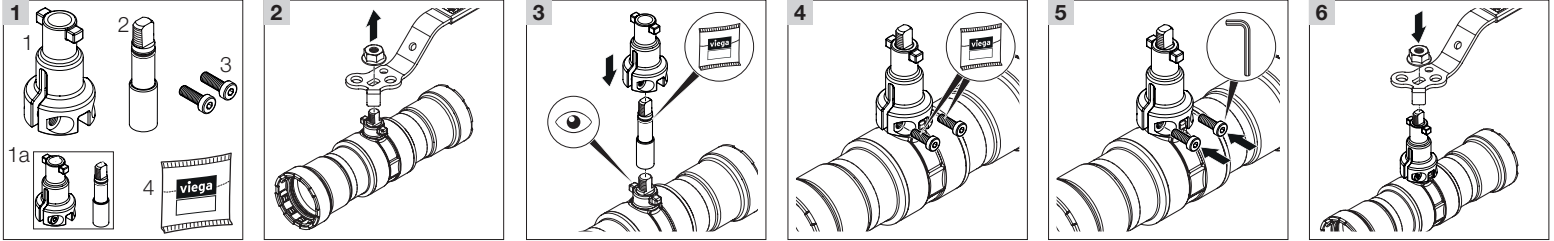
Models 4070.96 and 2971.66



Viega LLC
585 Interlocken Blvd.
Broomfield, CO 80021

Phone (800) 976-9819
www.viega.us

PI-PP 530905 0823 Lockable Stem Extension



- 4 Place exterior piece of extender (component 1 from graphic 1) over the interior piece. Ensure the existing notch on the stem aligns and enters the designated notched-out area on the extender. If using Model 4070.96, wet the provided bolts of the stainless steel exterior piece with a little grease (component 4 from graphic 1). Model 2971.66 does not require grease.
- 5 Hand tighten the bolts to the exterior component. Do not exceed 2 nm of force (17.7 in-lb).
- 6 Align the handle that was removed with the new stem extender and tighten the handle back into place with the nut that was previously removed. Tighten the nut with 44 to 88 in-lb.
- 7 Test the handle and ensure the same force that was needed to open the handle without the extender matches the new force needed to open the handle with the extender.
- 8 Dimensions for each size:

Size (in)	H1 Dimension (in)	H2 Dimension (in)	H3 Dimension (in)
1/2	0.83	1.77	0.58
3/4	0.83	1.77	0.72
1	1.02	1.77	0.88
1 1/4	1.02	1.77	1.14
1 1/2	1.02	1.77	1.36
2	1.02	1.77	1.65

EN

Viega ProPress Lockable Stem Extension Models 4070.96 Stainless / 2971.66 Brass

! Viega products are designed to be installed by licensed and trained plumbing and mechanical professionals who are familiar with Viega products and their installation. **Installation by non-professionals may void Viega LLC's warranty.**

i The Stainless Model 4070.96 of the ProPress Lockable Stem Extension is for use with Viega ProPress Ball Valve Model 5170. The Brass Model 2971.66 of the ProPress Lockable Stem Extension is for use with Viega ProPress Ball Valves Models 2971.1ZL, 2971.3ZL, 2971.4ZL, 2971.6ZL, 2870ZL, 4870, 4170, 6675, 6675.1, 6675.2, and 6675.3. (If lockable feature is required, use stem extension only in conjunction with Model 2971.8.)

- 1 Confirm components are present and free of defects: 1=exterior piece of extender (1a=Brass Model 2971.66 comes with screws already factory assembled and no grease packet), 2=interior piece of extender, 3=two screws (only for Model 4070.96), 4=grease packet (only for Model 4070.96).
- 2 Turn stem nut in counterclockwise direction while holding the valve handle. Remove stem nut and handle from stem.
- 3 Insert interior piece of extender (component 2 from graphic 1) onto stem thread. For Model 4070.96, wet the o-ring on the stainless steel interior piece with a little grease (component 4 from graphic 1).