

Tech Data

Viega ProPress® Zero Lead Ball Valve Model 2975.3ZL



Description

Viega ProPress Zero Lead ball valve is a full port ball valve with a drain intended for potable applications. The ball valve features EPDM sealing elements, EPDM

stem seals, zero lead brass body, and Viega's Smart Connect® Technology for easy identification of unpressed connections during pressure testing.

Features

- 316 stainless steel ball
- Reinforced PTFE seat
- Brass stem
- Drain option
- Smart Connect technology

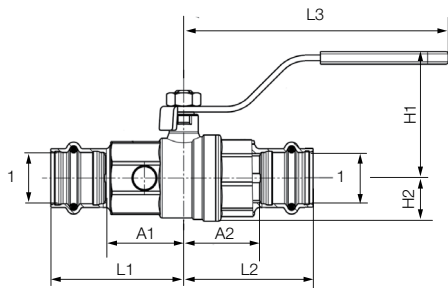
Accessories

- Handle model 2971.8
- T-handle model 2971.26
- Insulated handle model 2971.46
- Stem extension model 2971.66

Approvals

- NSF®-61
- NSF®-372
- NSF®-U.P. Code
- IAPMO/ANSI Z1157
- ASME A112.4.14/CSA B 125.14
- Listed by NSF to Commercial Hot

ProPress Zero Lead Ball Valve Model 2975.3ZL



Part No.	Size (in)	H1 (in)	H2 (in)	L1 (in)	L2	L3 (in)	A1 (in)	A2 (in)	Cv (US gal/min)
	1								
87845	½	2.05	0.63	2.01	1.97	4.61	1.18	1.14	13.5
87850	¾	2.20	0.75	2.28	2.24	4.61	1.38	1.34	29.9



This document is subject to updates. For the most current Viega technical literature, please visit www.viega.us.



Viega products are designed to be installed by licensed and trained plumbing and mechanical professionals who are familiar with Viega products and their installation. **Installation by non-professionals may void Viega LLC's warranty.**



Zero Lead identifies Viega products meeting the lead free requirements of NSF/ANSI/CAN 61 through testing under NSF/ANSI/CAN 372 (0.25% or less maximum weighted average lead content).

Ratings

- Temperature range: 0°F–250°F
- Max. operating pressure: 250 psi

Component	Material
Body	Zero lead brass CW511L
Ball	316 stainless steel
Seat	Reinforced PTFE
Stem	Brass
Stem Seals	EPDM
Nut	Zinc-plated steel
Sealing Element	EPDM

V Viega LLC
585 Interlocken Blvd.
Broomfield, CO 80021

Phone (800) 976-9819
www.viega.us

TD-PP 0525 ProPress Ball Valve 2975-3ZL

viega